

# Sewing Caddy Instructions

## Step 1

Decide on the Fabric for your Bag inside and outside. Should they be the same colour or maybe a contrasting colour.

- Cut 1 x Outer Fabric Main Body.
- Cut 1 x Lining Fabric Main Body.
- Cut 1 x Compressed Batting / Car Roof Lining Foam Main Body.
- Cut 2 x Contrast Fabric Outside Pockets.
- Cut 2 x Fusing Outside Pockets.
- Cut 2 x Contrast Fabric Inside Pockets.
- Cut 2 x Fusing Inside Pockets.
- Cut 2 x Contrast Fabric Side Panel.
- Cut 2 x Fusing Side Panel
- Cut 2 x Contrast Fabric Handle Facings.

## Step 2

Fuse Compressed Batting to Fabric:

Fuse Compressed batting and Fusing to the wrong side of fabric pieces.

*Ami's Top Tip: Cut fusing/batting 1cm(seam allowance width) smaller than fabric pieces to avoid bulky seams when sewing.*

## Step 3

Quilting Main Body:

Fuse Compressed Batting/Foam to wrong side of Outer Fabric Main Body Piece, Now fuse (using double sided fusing/Spider web) the Main Body Lining wrong side to the fused Main Body Outer Fabric wrong side.

Stitch/Quilt through all 3 layers in your choice of pattern.

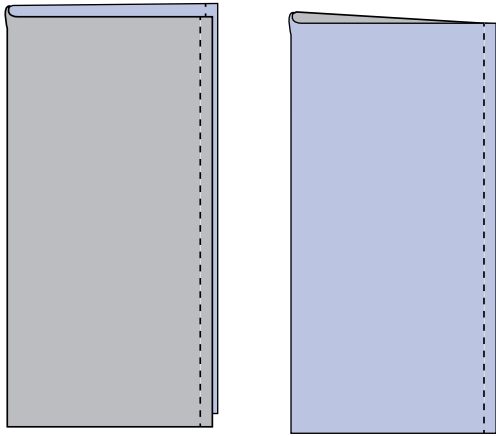
## Step 4

Preparing In- & Outside Pockets:

Using the Inside & Outside Pocket Pieces – Fold each of the 4 in  $\frac{1}{2}$  right side to right side along the length of each piece and pin.

Sew at 1cm on long raw edge on all 4 pieces. Turn right side out, iron sewn edge neat and topstitch sewn seam close to edge. See below. Set 2 Inside and 2 Outside Pockets aside.

*Ami's Top Tip: Use a Tailors Clapper and Steam Iron to get perfectly ironed flat seams.*

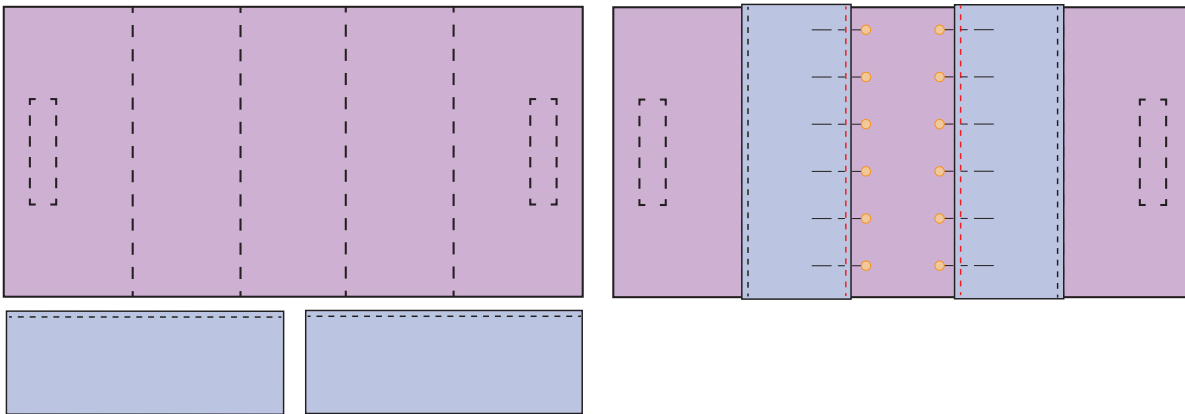


## Step 5

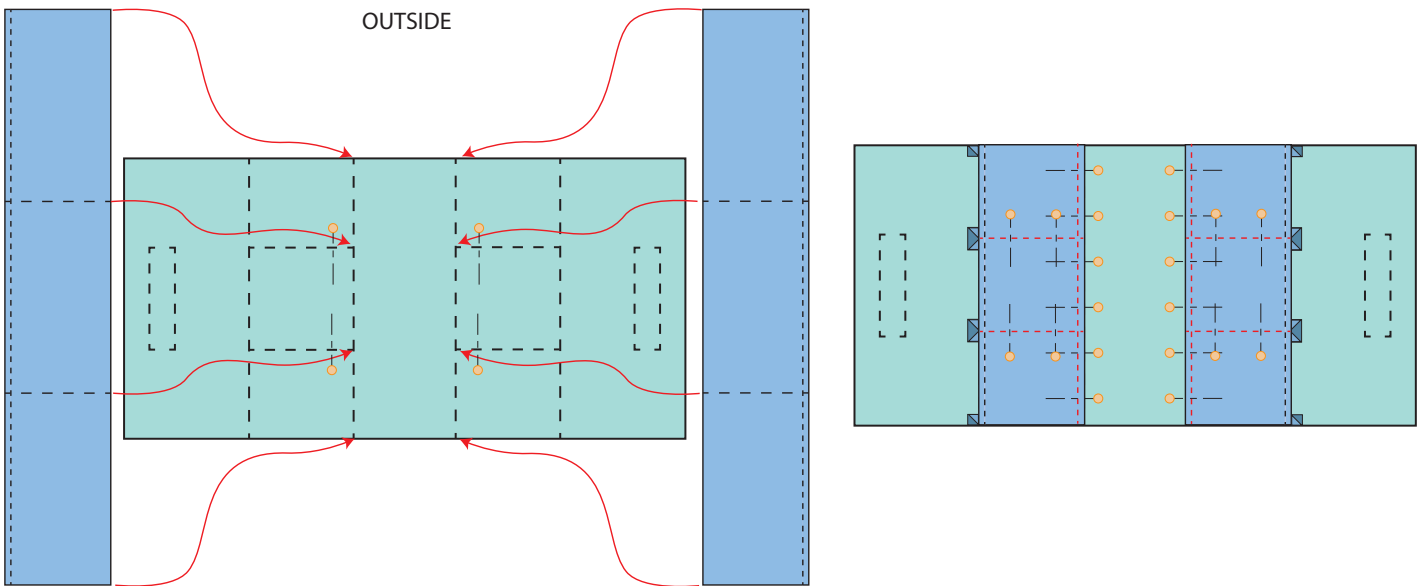
### Attaching In- and Outside Pockets:

Using pattern markings and illustration below sew pockets to in- and outside.

INSIDE



OUTSIDE



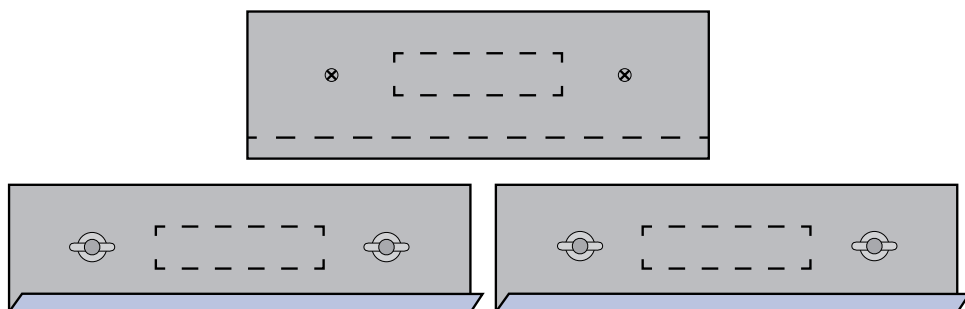
## Step 6

### Preparing & Sewing Handle Facing:

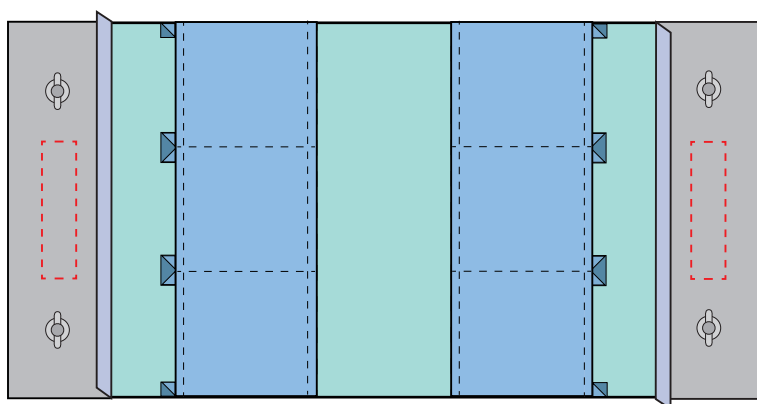
Draw pattern markings on the wrong side of each Handle Facing.

Place 2 x Fused Handle Facings Wrong Side Up, and Iron in a 1cm Seam Allowance on one of the long sides.

Insert the Magnetic Bag Clasps on each side the Handle Facings at pattern markings.

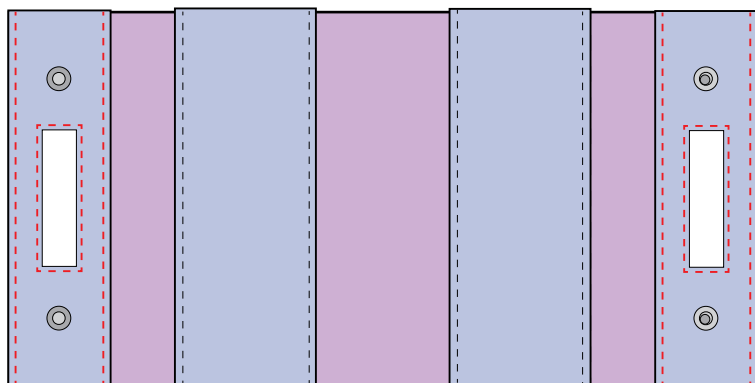
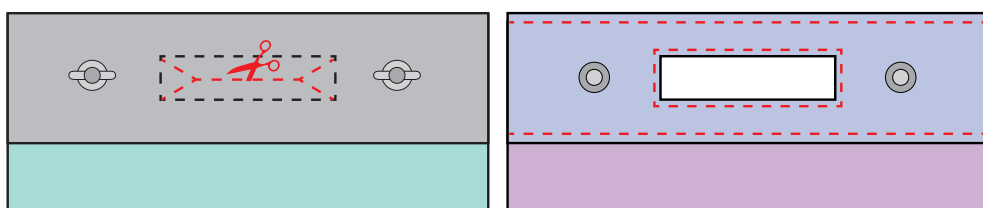


Now pin Handle Facing right side to right side to the Main Body.  
Sew through all layers the square Marked.



Cut inside square as shown below, be careful not to cut through your stitches, Now Turn out through square hole, so Right Side of fabric is showing and you have a Handle Hole.

Iron and Pin flat. Topstitch around square hole and at top and bottom of facing to finish handle.

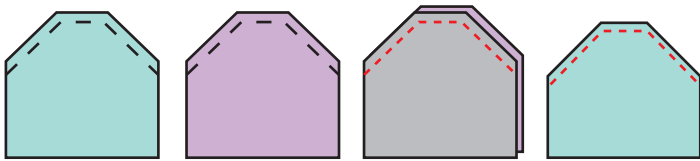


Step 7

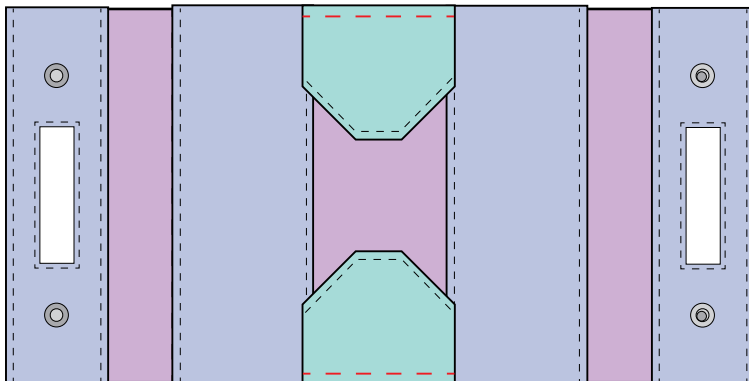
### Inserting Side Panels:

Using one Inside fabric and one Outside fabric Side Panel Piece Sew them right side to right side along the top seam as below.

Turn right side out, Iron and Topstitch sewn edge.



Now Place the Side Panels right side to right side at pattern markings as shown below on the inside of you Main Body. Sew at 1cm starting 1cm in and stopping exactly 1cm from end. Fold up the Side panels and pin up, forming the bag sides, Sew at 1cm on all 4 sides.

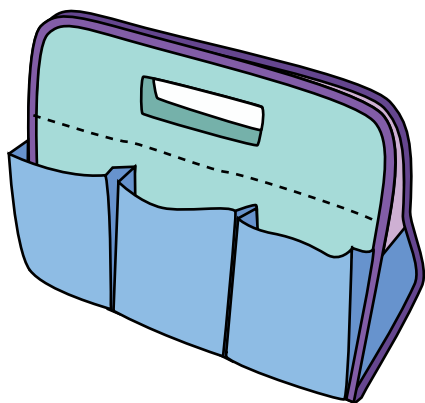


### Step 8

#### Finishing with Bias Binding:

Cut 5mm away all around Main Body, neatening and squaring Main Body.

Using either bought Bias Binding or Binding made by you, attach Bias all around raw edges of the Main Body.



#### Fabric:

1/2 meter outer fabric

1/2 meter lining fabric

1/2 meter Fusing

1 meter Compressed Batting / Foam

2 Magnetic Bag Clasps

2 meter Bias binding

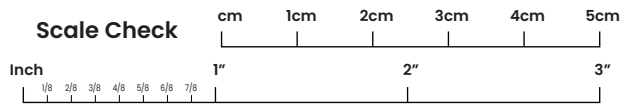
#### Supplies:

Seralon thread

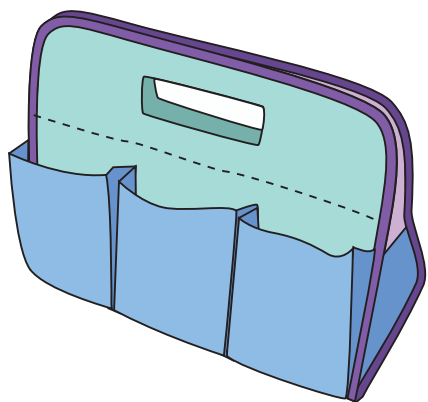
Tools:

Sewing machine bobbins  
Fabric scissors  
Fabric marker/ tailors chalk  
Pins  
Fabric clips  
Prym mini steam iron  
Mini ironing board  
Rotary cutter  
Self-healing cutting mat.  
Quilting ruler  
Quilting ruler handle  
Paper scissors  
Paper glue  
Tape measure.  
Hand sewing needle.

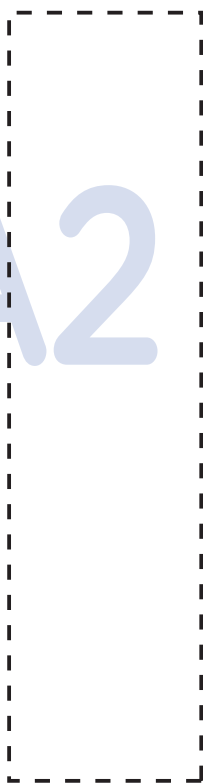
### Scale Check



This pattern / document is protected by copyright law. It may not be reproduced, distributed, or sold in any form without explicit written permission of Fabric8 Pty Ltd. However, you are allowed to create items using this pattern for personal use or for sale. Please tag us on social media when you showcase items made from our patterns. We would love to see your creations.



A2







## Sewing Caddy

### MAIN BODY

Cut x 1 Outer Fabric

Cut x 1 Inner Fabric

Cut x 1 Fusible Batting or

Car

Roof

Lining

Foam

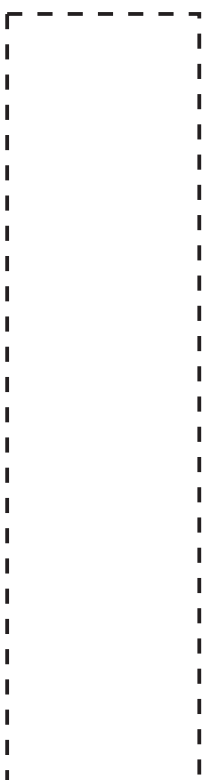
1cm Seam Allowance Incl

# A3

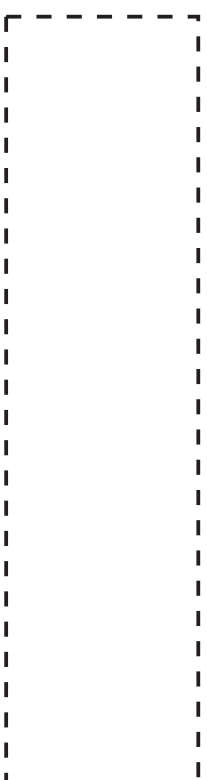


A4

The image shows a template for an A4 sheet of paper. It features a solid blue border with triangular fold marks at the corners and midpoints of the left and right sides. Inside, a dashed black line forms a central rectangular area. The text 'A4' is centered within this dashed area.



A5



fabric8

**Sewing Caddy**

**INSIDE POCKETS**

Cut x 2 Contrast Fabric

Cut x 2 Fusing

1cm Seam Allowance Incl

B1

B2

B3

**fabric8**

**Sewing Caddy**

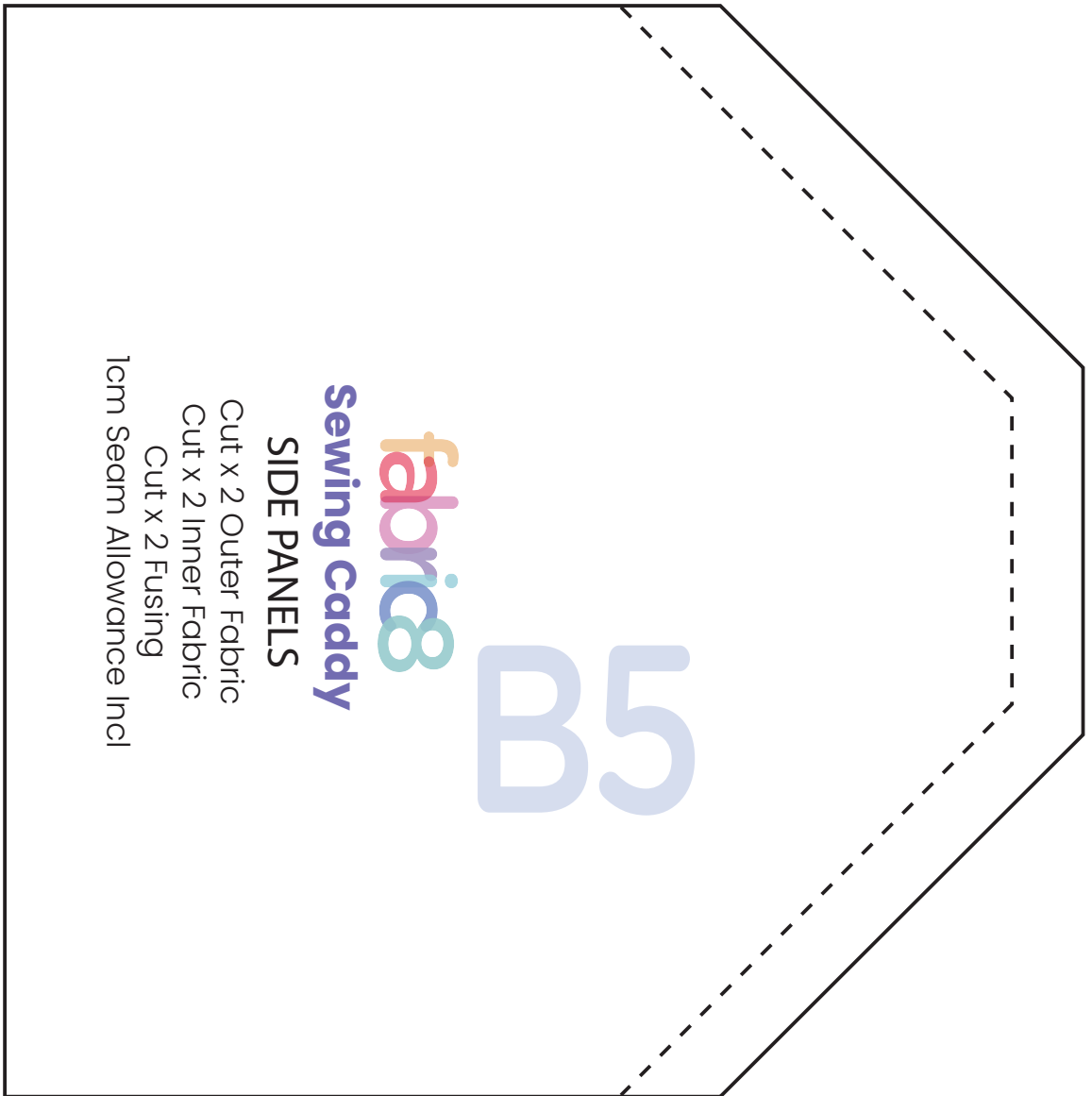
**OUTSIDE POCKETS**

Cut x 2 Contrast Fabric

Cut x 2 Fusing

1cm Seam Allowance Incl

B4



**fabric8**  
**Sewing Caddy**

**SIDE PANELS**

- Cut x 2 Outer Fabric
- Cut x 2 Inner Fabric
- Cut x 2 Fusing
- 1cm Seam Allowance Incl