

Fold-Away Shopping Tote 1 Instructions

Step 1

Decide on the Fabric for your Bag inside and outside. Should they be the same colour or maybe a contrasting colour.

- Cut 2 x Fabric Main Bag.
- Cut 2 x Fabric Pocket.
- Cut 2 x Fabric Pocket Flap.
- Cut 2 x Handle Strapping
- Cut 1 x Pocket Loop Ribbon.
- Cut 2 x Contrast Fabric Inside Pockets.
- Cut 2 x Fusing Inside Pockets.
- Cut 2 x Contrast Fabric Side Panel.
- Cut 2 x Fusing Side Panel
- Cut 2 x Contrast Fabric Handle Facings.

Step 2

Prepare Straps:

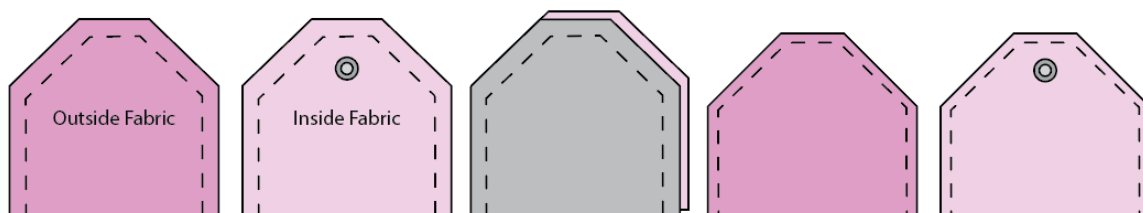
Cut Strapping to length and cut the ribbon loop.

Step 3

Prepare & Sew Pocket & Flap:

Ami's Top Tip: Iron 1 or 2 square pieces of fusing over the spot, on wrong side of fabric, where clasp/popper will be inserted for extra support and strength.

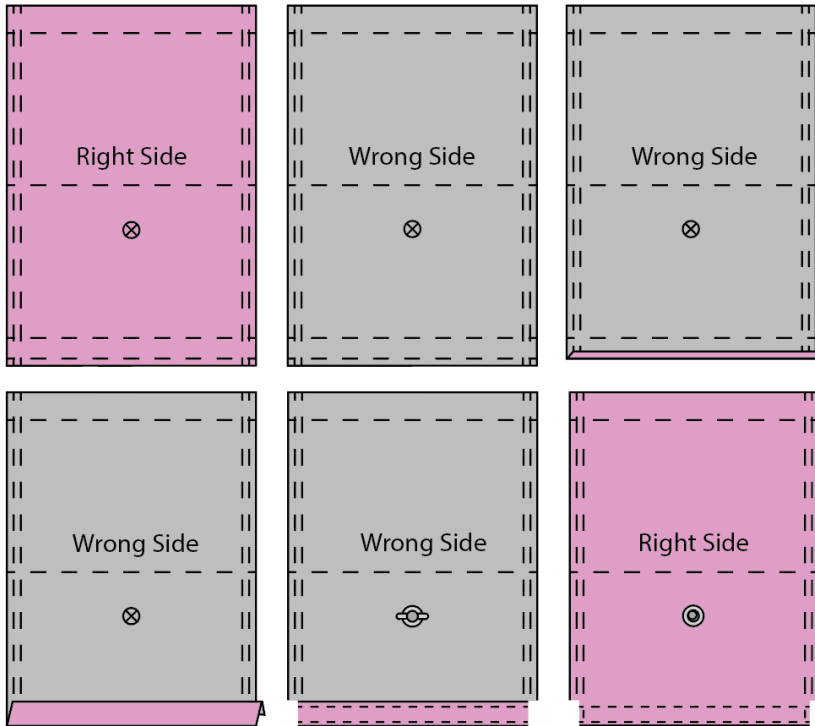
Pocket Flap - Insert Magnetic Bag Clasp/Popper on the Inside Fabric Pocket Flap. Pin Pocket Flap Inside and outside, right side to right side and sew on 3 sides as below at 1cm. Trim bulk and corners, turn right side out, iron and topstitch on 3 sides close to edge.



Pocket – Bring over all pattern markings. On the short edge with the 2 fold lines, fold up ½ cm towards wrong side of fabric & iron flat. On the same fold again but by 1 ½ cm & iron flat. Topstitch on both edges of the fold. Trim away bulk ½ cm as below.
 Insert Magnetic Bag Clasp/Popper on the Right Side of fabric at pattern marking.

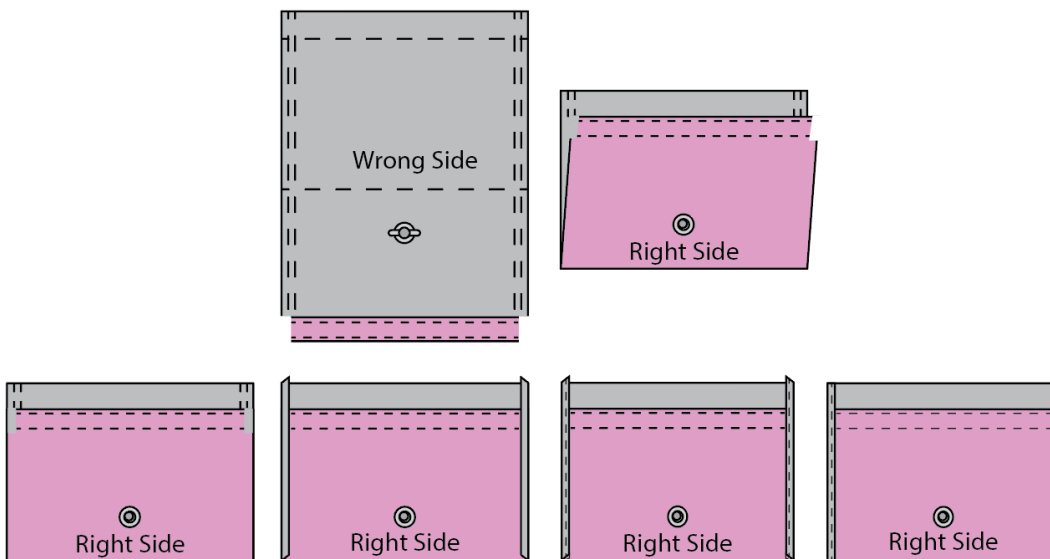
Ami's Top Tip: Iron 1 or 2 square pieces of fusing over the spot, on wrong side of fabric, where clasp/popper will be inserted for extra support and strength.

Ami's Top Tip: Use a Tailors Clapper and Steam Iron to get perfectly ironed flat seams.



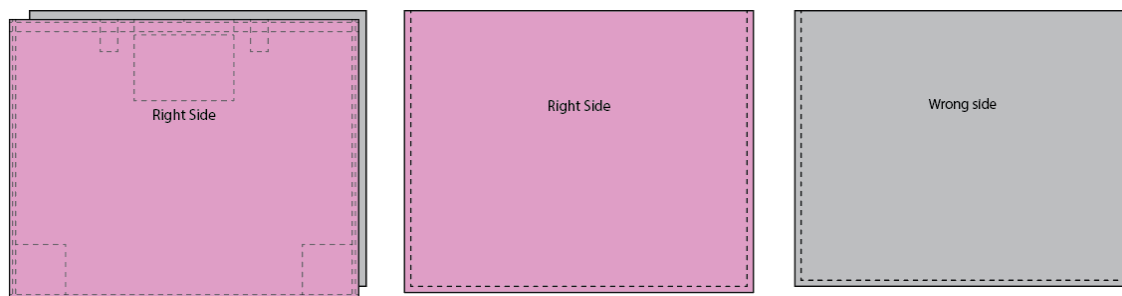
With wrong side up fold up at fold line as below. Now fold a ½ cm seam on both sides & iron flat. Repeat with another ½ cm seam & iron flat. Now Topstitch through all the layers to keep nice and flat.

Ami's Top Tip: Use a Tailors Clapper and Steam Iron to get perfectly ironed flat seams.

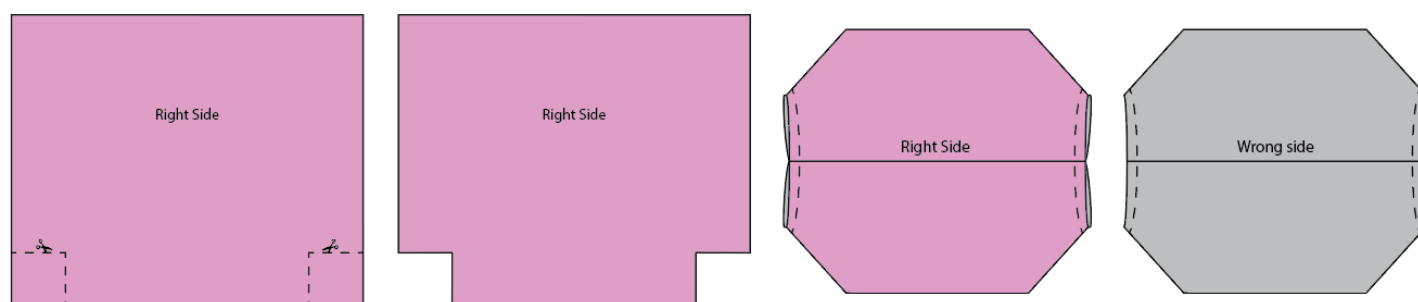


Step 4
 Preparing & Sewing Main Bag:

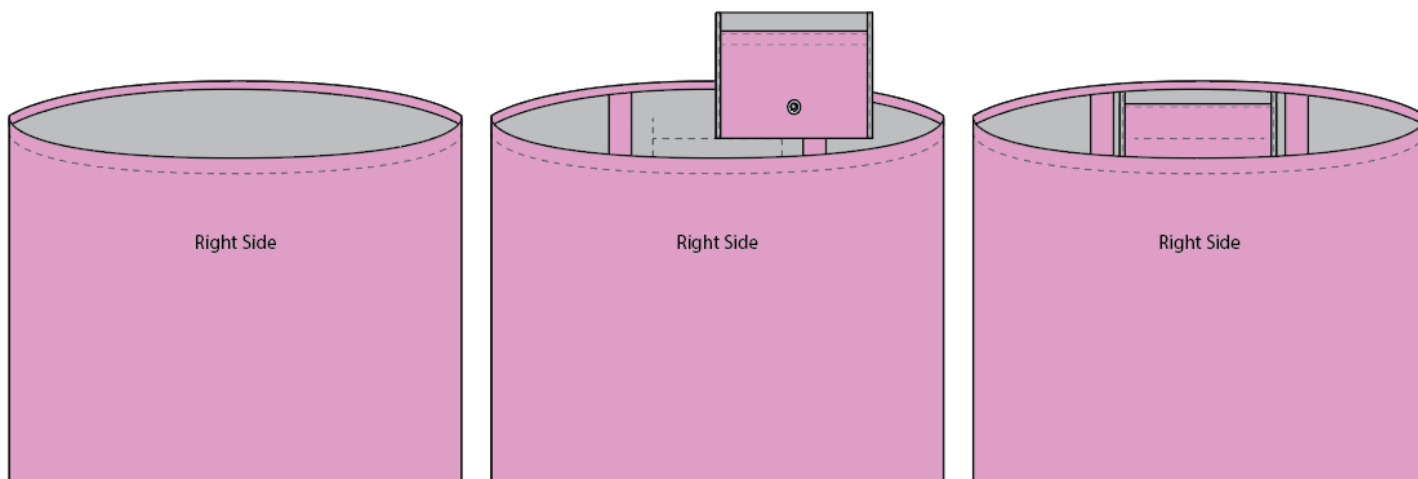
Place 2 Main Bag Pieces WRONG side to WRONG side and sew 2 sides & bottom at $\frac{1}{2}$ cm seam allowance. Trim bulk and corners. Turn Bag Wrong side out, sew same 3 sides again at $\frac{1}{2}$ cm seam allowance.



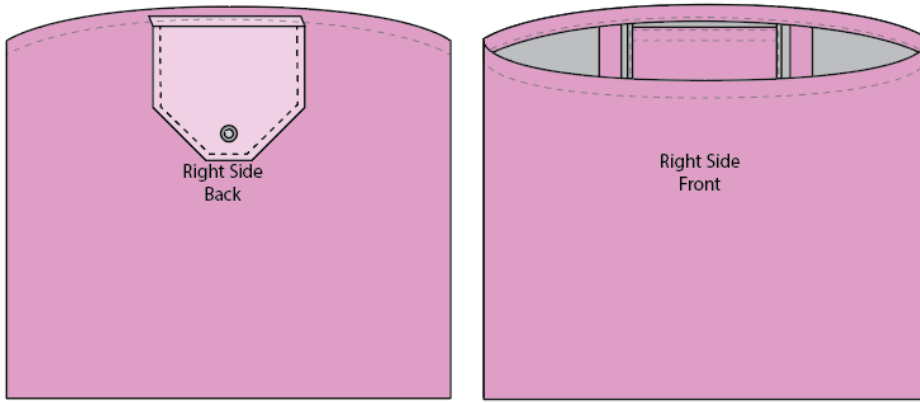
Turn Bag Right Side Out & mark corner pattern markings. Cut through all layers as shown below. Bring sides of box corners together and sew at $\frac{1}{2}$ cm on Right Side of fabric, trim bulk and corners. Turn Bag Wrong side out and repeat $\frac{1}{2}$ cm seams on Wrong Side.



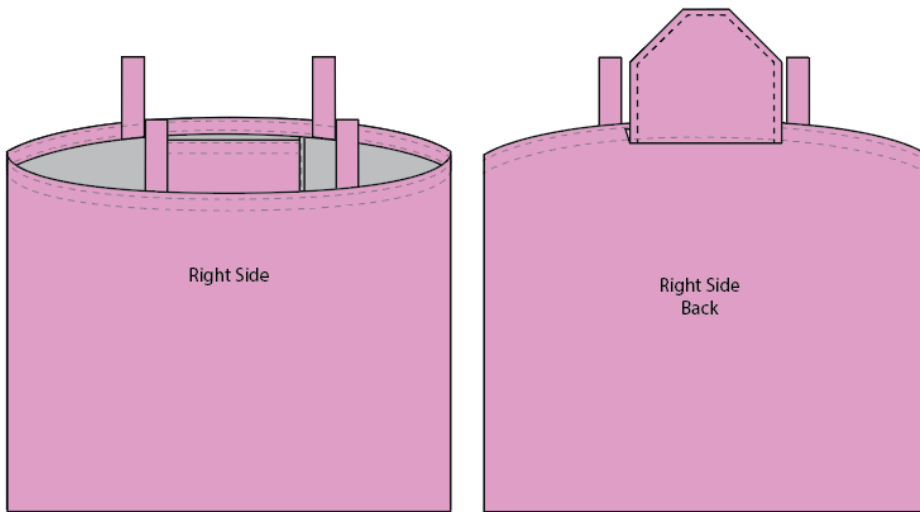
Turn Bag Right Side Out. Fold a $\frac{1}{2}$ cm seam allowance to the Wrong Side all around top edge. Now Insert straps on wrong side under $\frac{1}{2}$ cm folded seam. Insert Pocket in the same way as on pattern markings. Pin all in place.



Turn bag around so the back is in front as below. Pin the Pocket flap in Place. Now turn a $1 \frac{1}{2}$ cm Seam Allowance all around the top. Sew Topstitch all around on the wrong side close to fold.



Fold Handles up & pin in place. Fold the Pocket Flap up and pin in place. Do a Final row of Topstitch close to the top edge, sewing handles and pocket flap into upwards position as shown below.



Fabric:
 1 meter fabric
 1 Magnetic Bag Clasps or Plastic Popper

Supplies:
 Seralon thread
 Tools:
 Sewing machine bobbins
 Fabric scissors
 Fabric marker/ tailors chalk
 Pins
 Fabric clips
 Prym mini steam iron
 Mini ironing board
 Rotary cutter
 Self-healing cutting mat.
 Quilting ruler
 Quilting ruler handle
 Paper scissors
 Paper glue
 Tape measure.
 Hand sewing needle.

Fold-Away Shopping Tote 2 Instructions

Step 1

Decide on the Fabric for your Bag inside and outside. Should they be the same colour or maybe a contrasting colour.

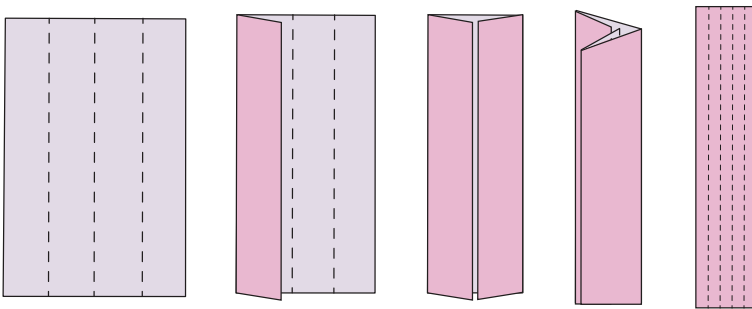
- Cut 2 x Fabric Main Bag.
- Cut 2 x Fabric Pocket.
- Cut 2 x Fabric Straps

Step 2

Prepare & Sew Straps:

Fold fabric as below and topstitch through all the layers at 5mm intervals down the whole length. Ser aside.

Ami's Top Tip: Use a Tailors Clapper and Steam Iron to get perfectly ironed flat seams.



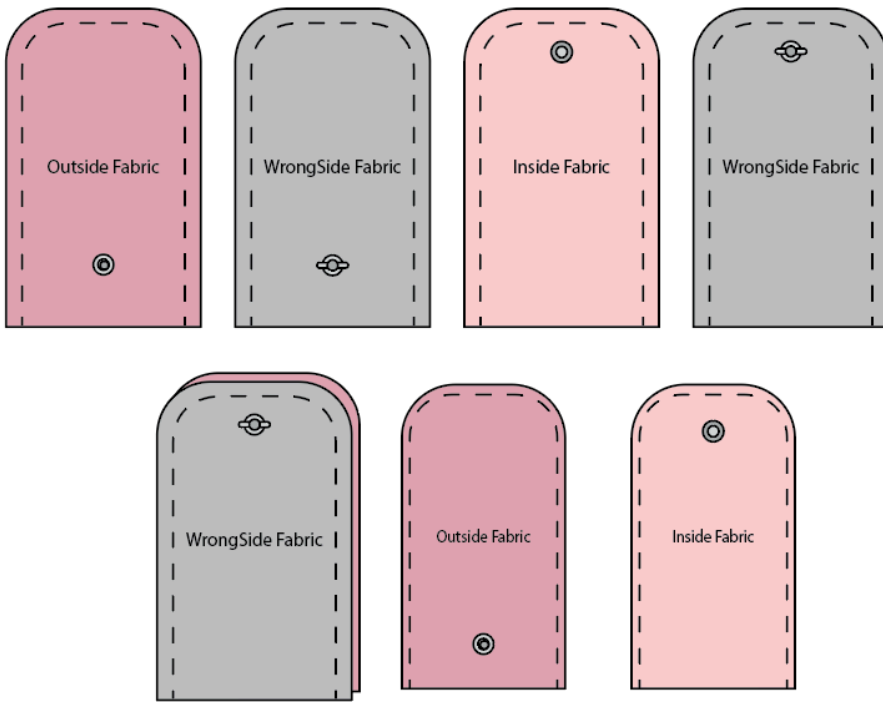
Step 3

Prepare & Sew Pocket:

Ami's Top Tip: Iron 1 or 2 square pieces of fusing over the spot, on wrong side of fabric, where clasp/popper will be inserted for extra support and strength.

Pocket - Insert Magnetic Bag Clasp/Popper on the Outside and Inside Fabric Pocket at pattern markings as below. Pin Pocket Inside and outside, right side to right side and sew on 3 sides as below at 1cm. Trim bulk and corners, turn right side out, iron and topstitch on 3 sides close to edge. Finish Raw edge with Overlocker or Zig Zag. Fold the overlocked edge in 1cm towards the Inside fabric & iron flat.

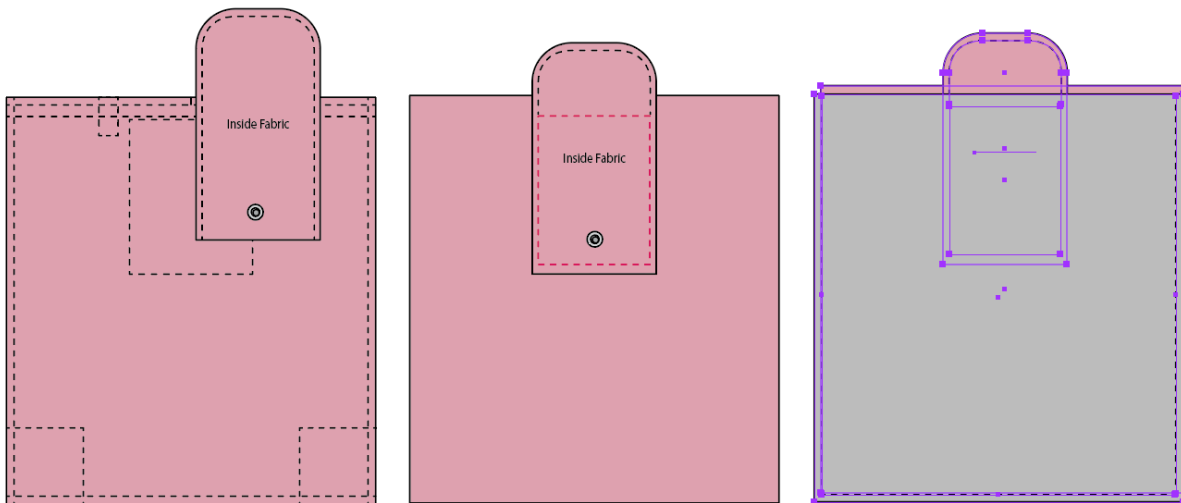
Ami's Top Tip: Use a Tailors Clapper and Steam Iron to get perfectly ironed flat seams.



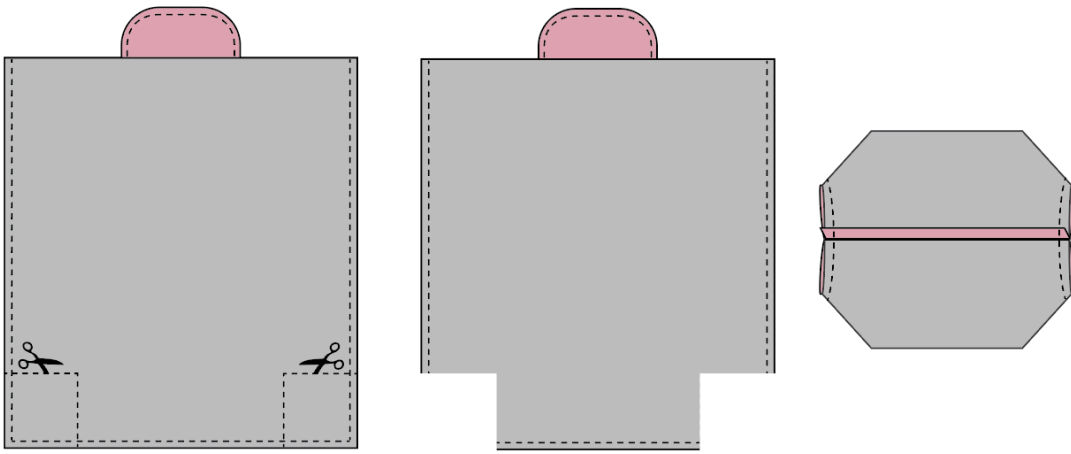
Step 4

Preparing Main Bag:

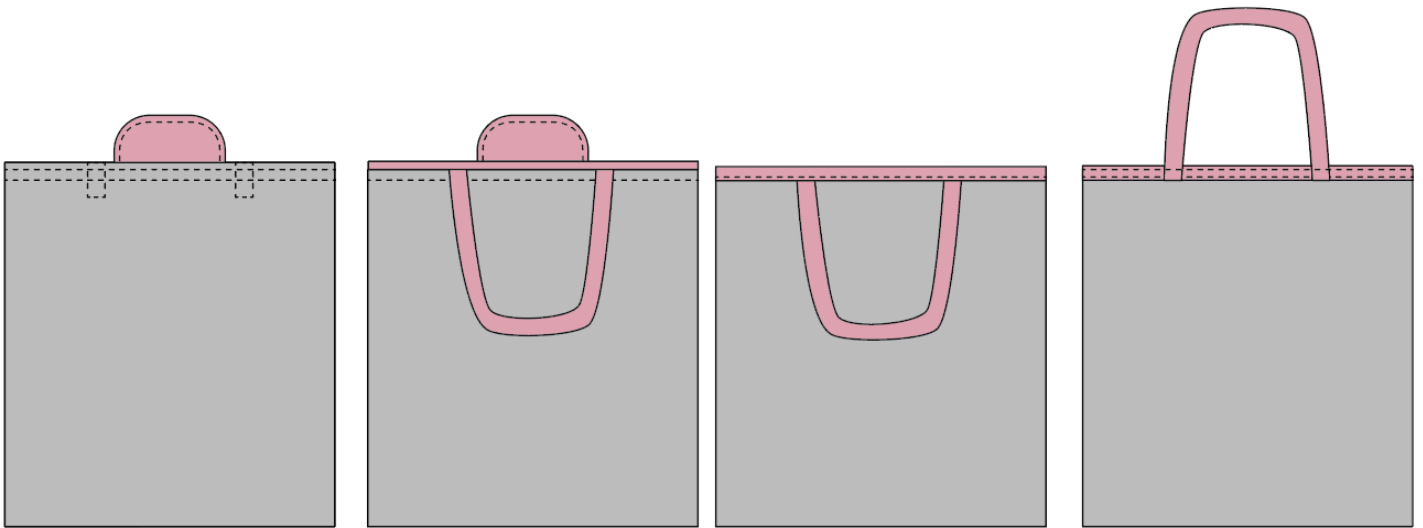
Place finished pocket onto right side of one of main bag pieces, remember to fold in the $\frac{1}{2}$ cm seam allowance at the raw edge. Topstitch in place on pattern markings. Sew 2 main bag pieces together right side to right side on the 2 sides and bottom. Finish seams with overlocker or zig zag.



Bring over Box Corner markings as below and cut out the box corners. Bring box corners together and sew the 2 seams, finish with overlocker or zig zag.



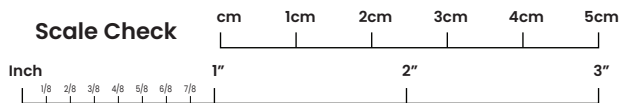
At the top edge of bag fold a 1 cm seam allowance to the wrong side, iron flat. Insert the straps at pattern markings under the folded seam. Pin in place, make sure pocket flap is flapped down before next step. Now fold top edge again 1 ½ cm towards the wrong side. Topstitch on wrong side close to edge as below. Now fold back handles and topstitch top edge, sewing handles down.



Fabric:
 1 meter fabric
 1 Magnetic Bag Clasps or Plastic Popper

Supplies:
 Seralon thread
 Tools:
 Sewing machine bobbins
 Fabric scissors
 Fabric marker/ tailors chalk
 Pins
 Fabric clips
 Prym mini steam iron
 Mini ironing board
 Rotary cutter
 Self-healing cutting mat.
 Quilting ruler
 Quilting ruler handle
 Paper scissors
 Paper glue
 Tape measure.

Hand sewing needle.



This pattern / document is protected by copyright law. It may not be reproduced, distributed, or sold in any form without explicit written permission of Fabric8 Pty Ltd. However, you are allowed to create items using this pattern for personal use or for sale. Please tag us on social media when you showcase items made from our patterns. We would love to see your creations.

A2

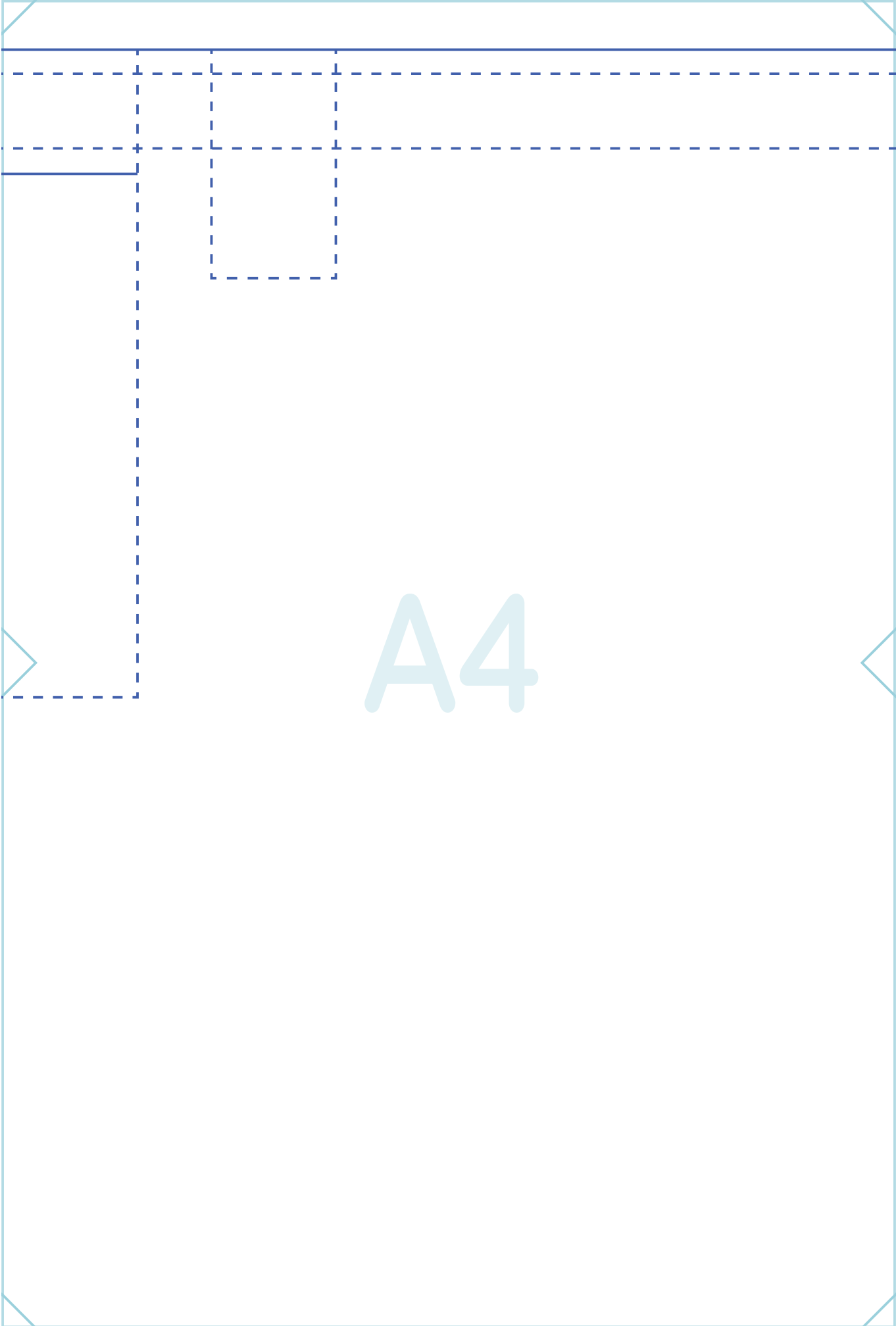


Fold-Away Shopping Tote 1

Main Bag

Cut x 2 Fabric
1cm Seam Allowance Incl

A3

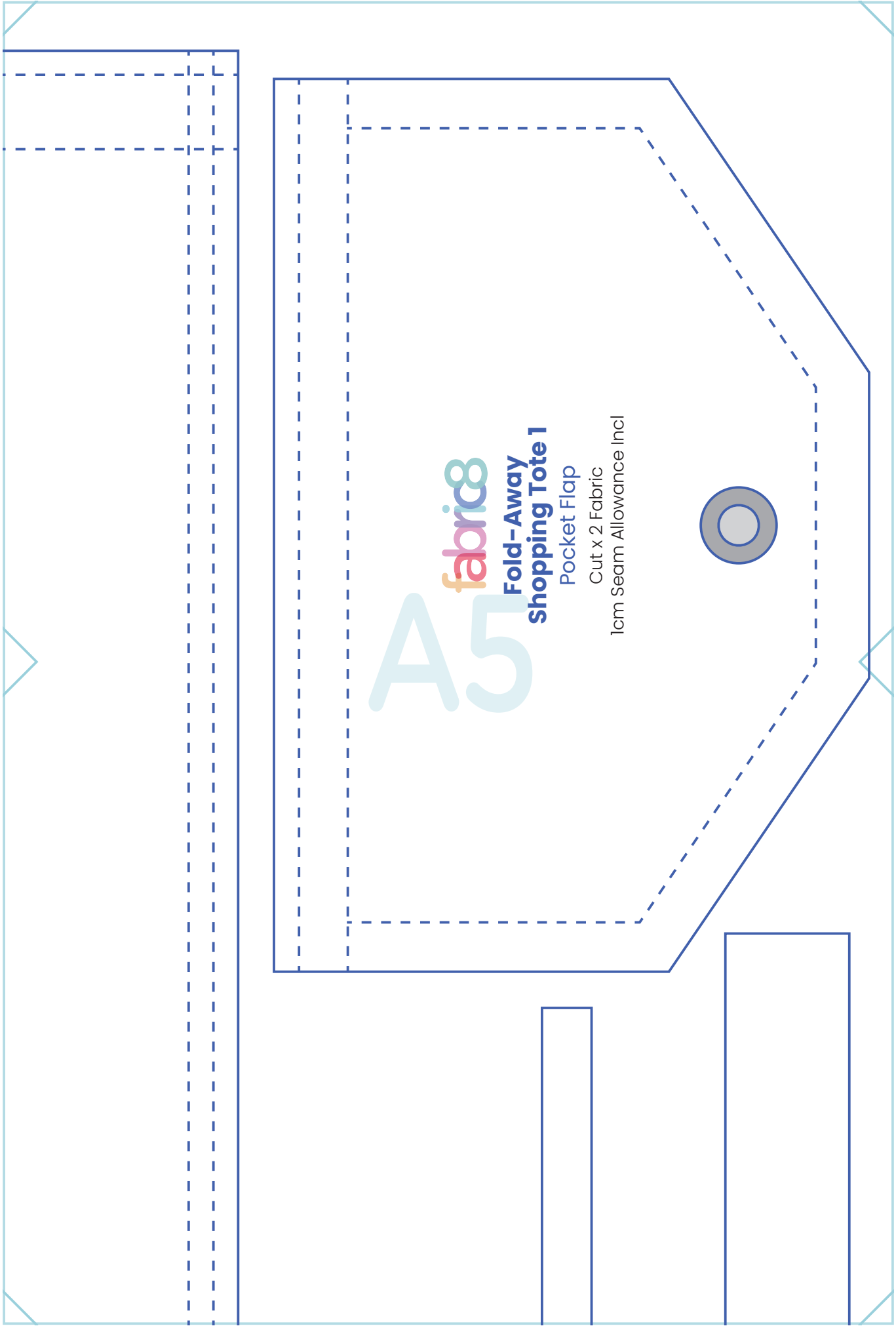
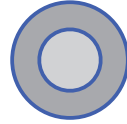


A4

fabric8
Fold-Away
Shopping Tote 1

A5

Pocket Flap
Cut x 2 Fabric
1cm Seam Allowance Incl



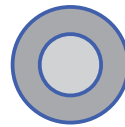


**Fold-Away
Shopping Tote 1**

Pocket

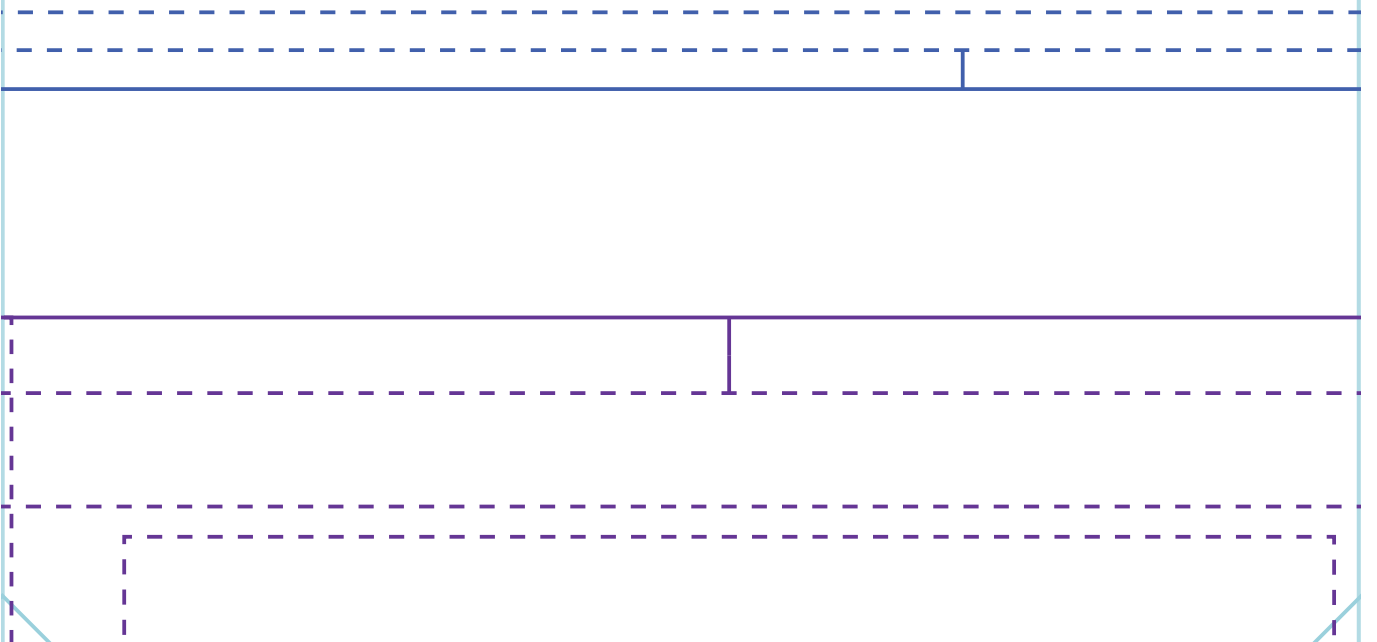
Cut x 2 Fabric
1cm Seam Allowance Incl

B1

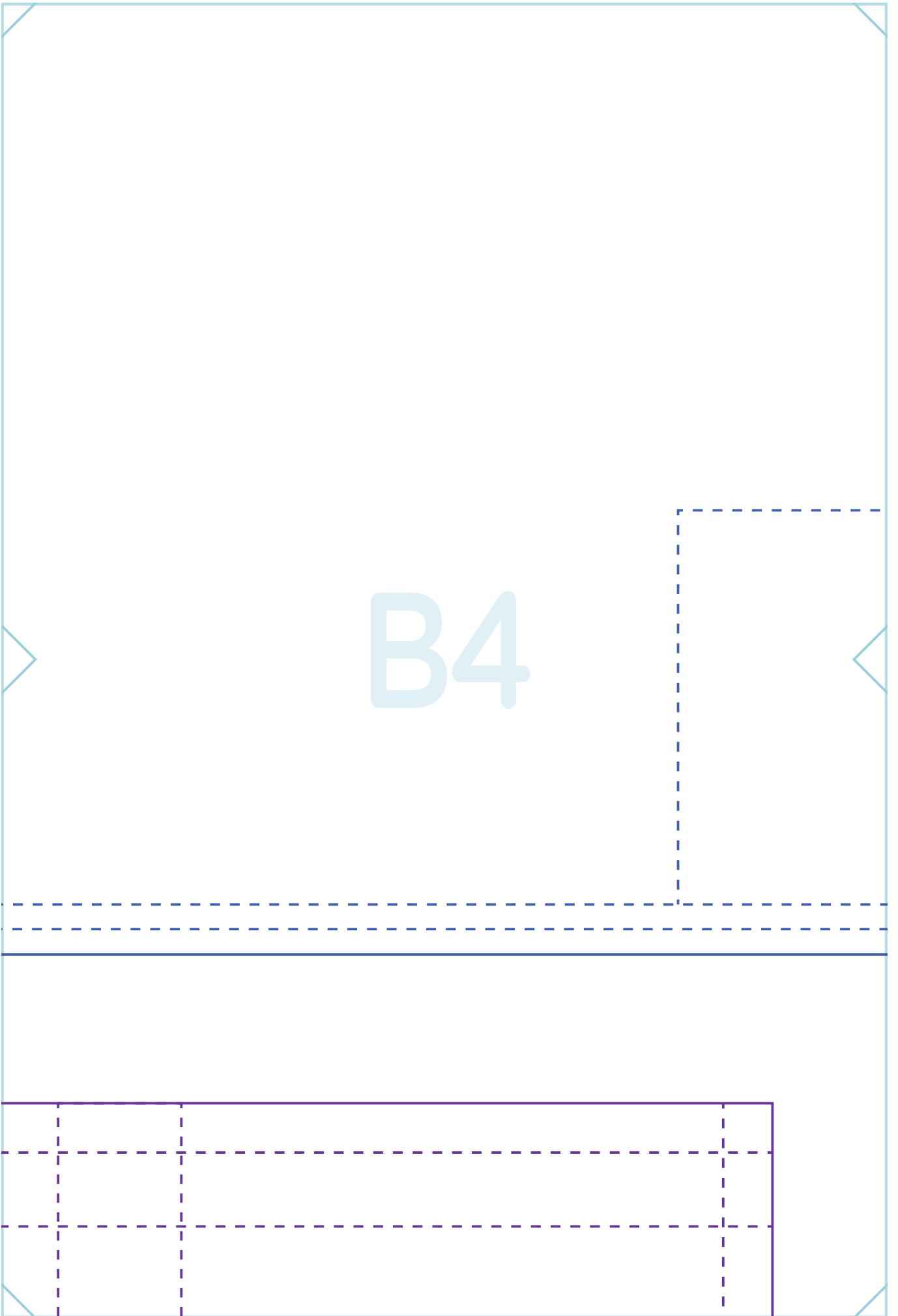


B2

B3



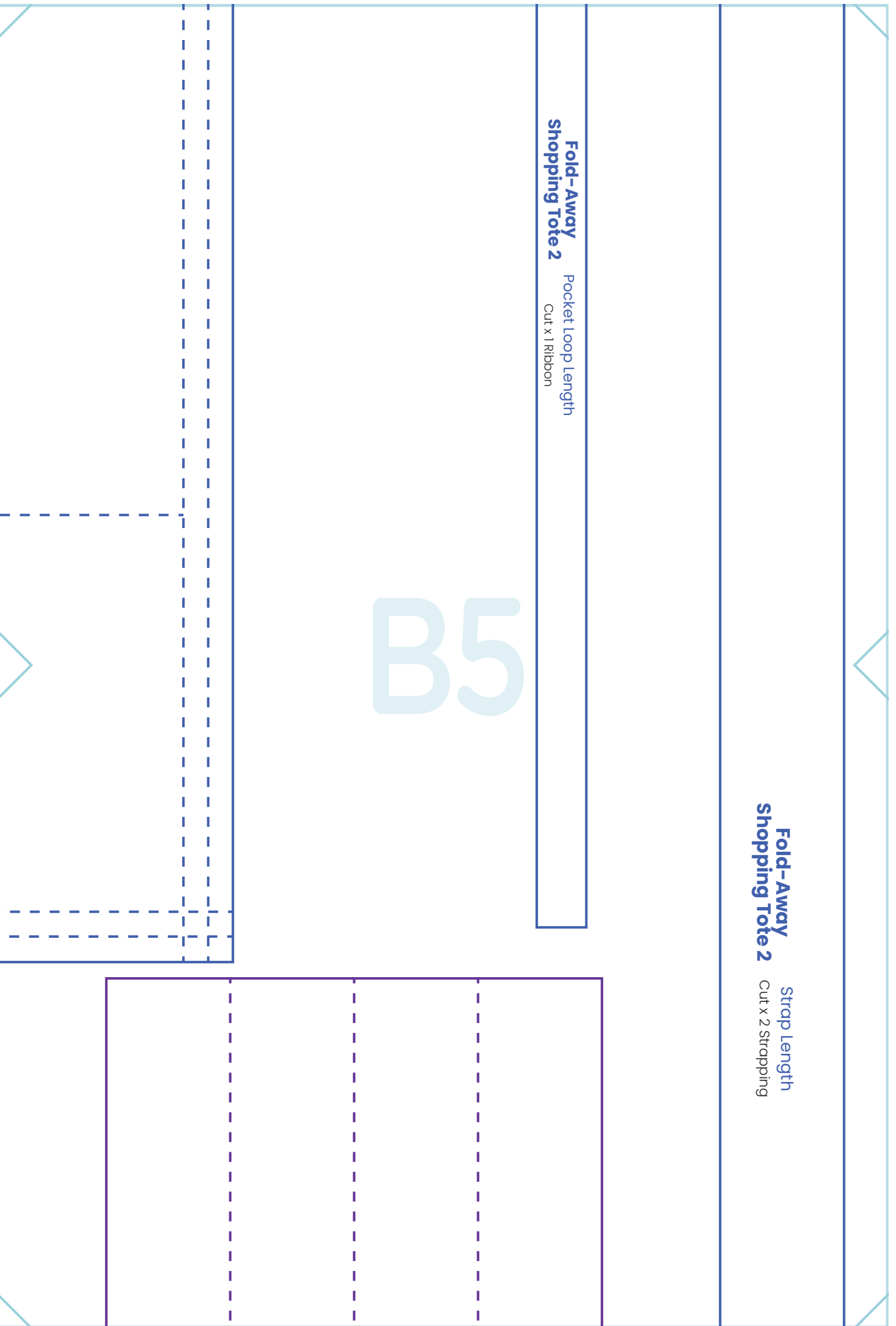
B4



**Fold-Away
Shopping Tote 2** Strap Length
Cut x 2 Strapping

**Fold-Away
Shopping Tote 2** Pocket Loop Length
Cut x 1 Ribbon

B5





**Fold-Away
Shopping Tote 2**

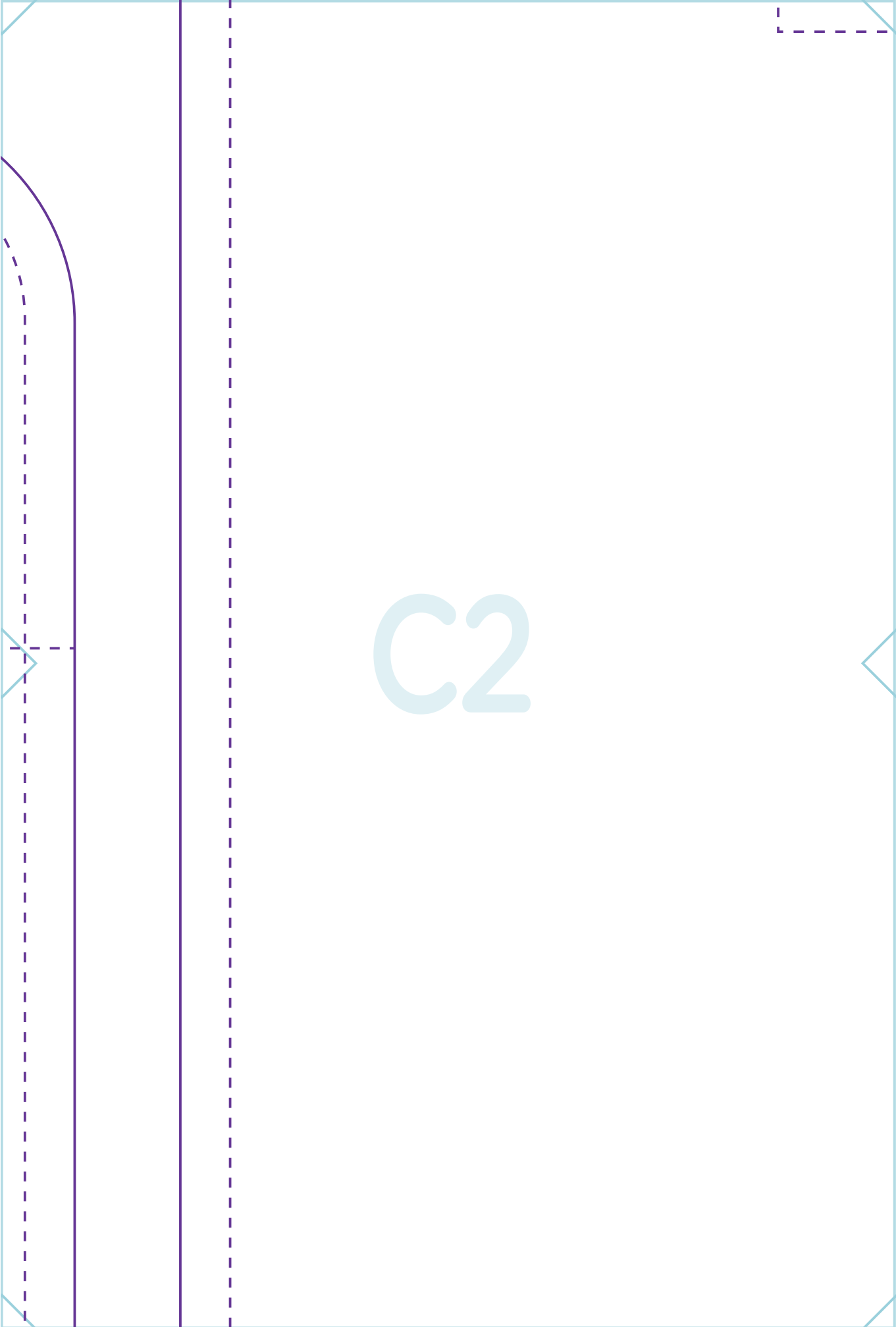
Pocket

Cut x 2 Fabric
1cm Seam Allowance Incl

C1



C2





Fold-Away Shopping Tote 2

Main Bag

Cut x 2 Fabric
1cm Seam Allowance Incl

C3

C4

fabric8

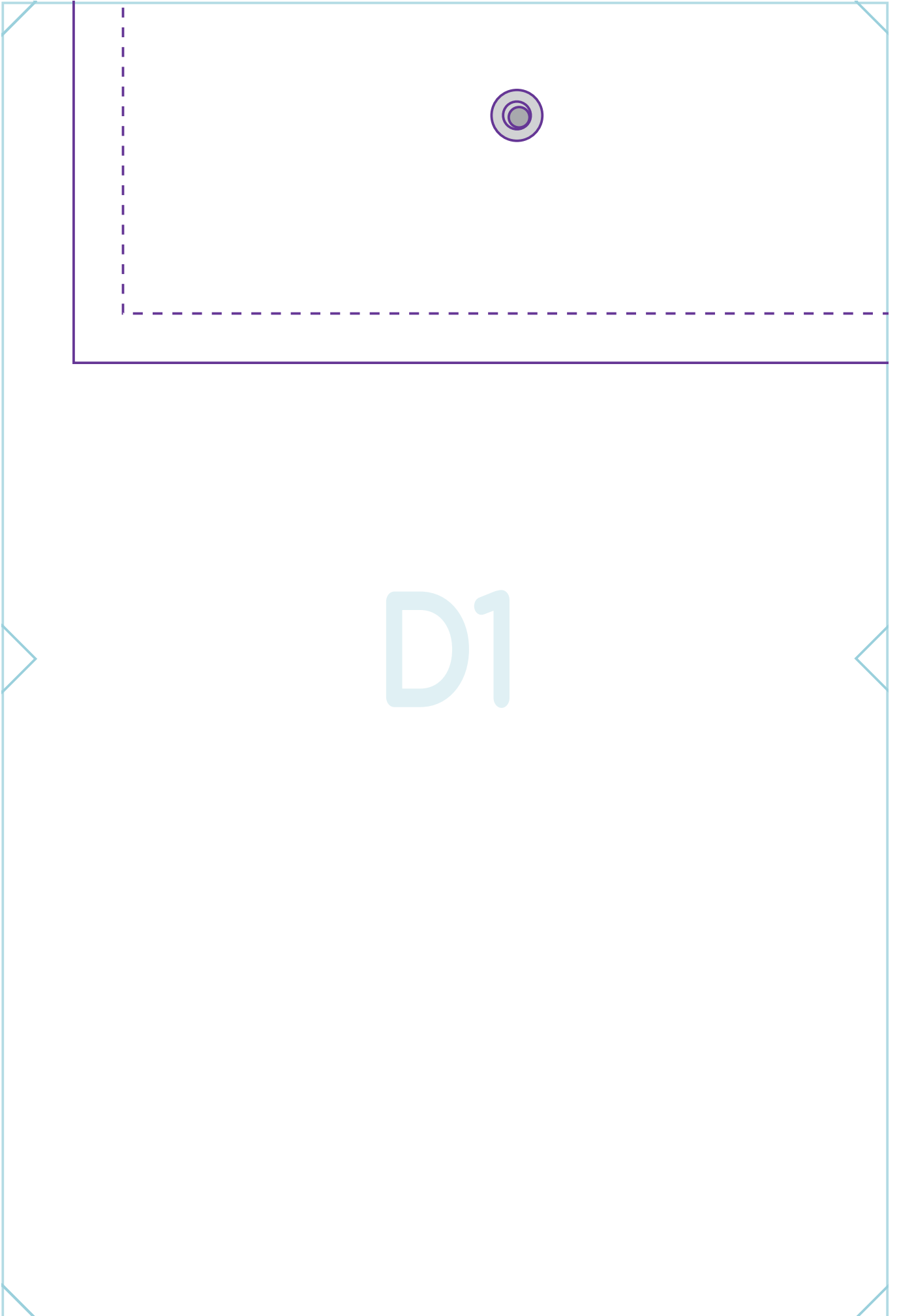
**Fold-Away
Shopping Tote 1**

Strap

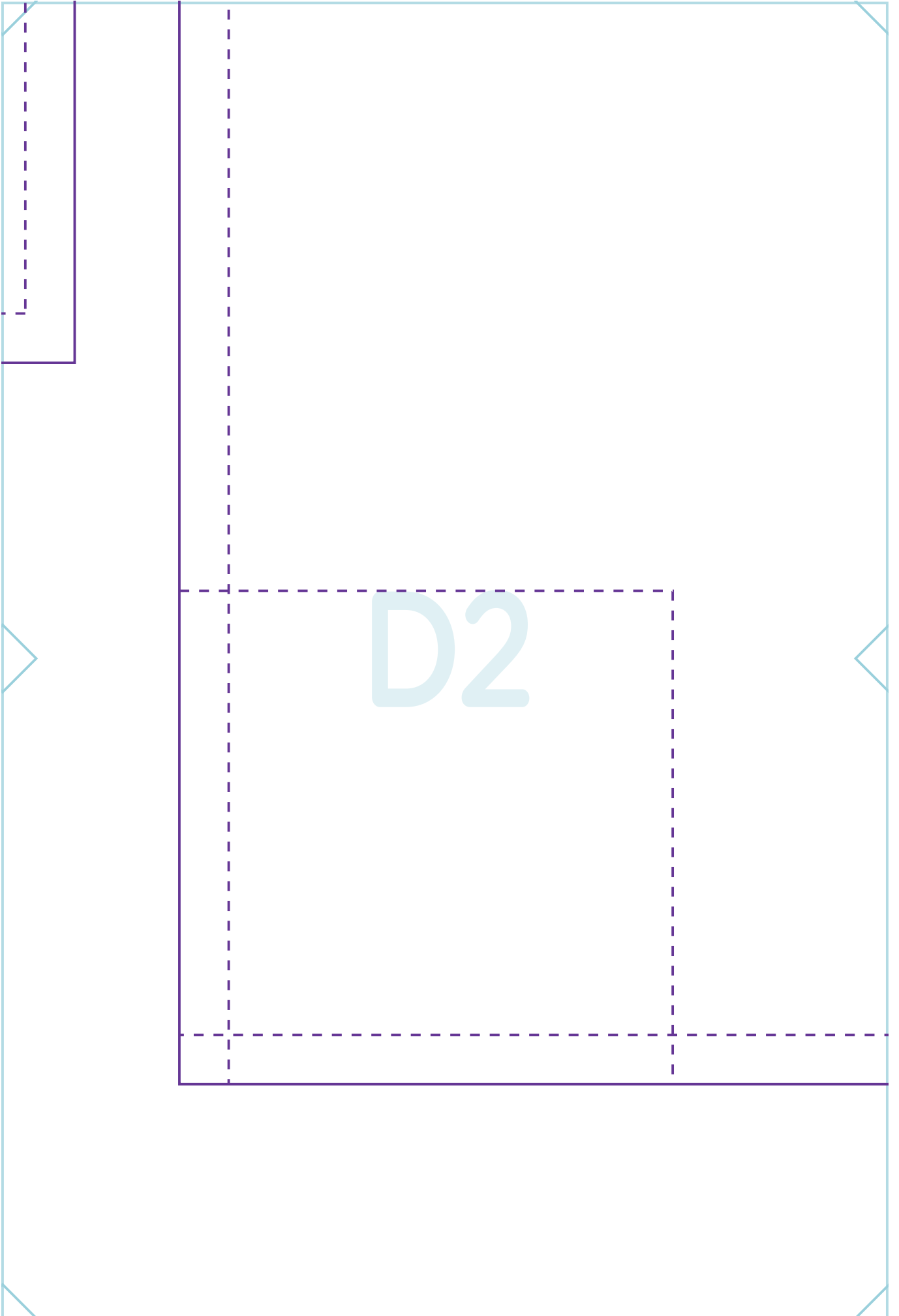
Cut x 2 Fabric

1cm Seam Allowance Incl

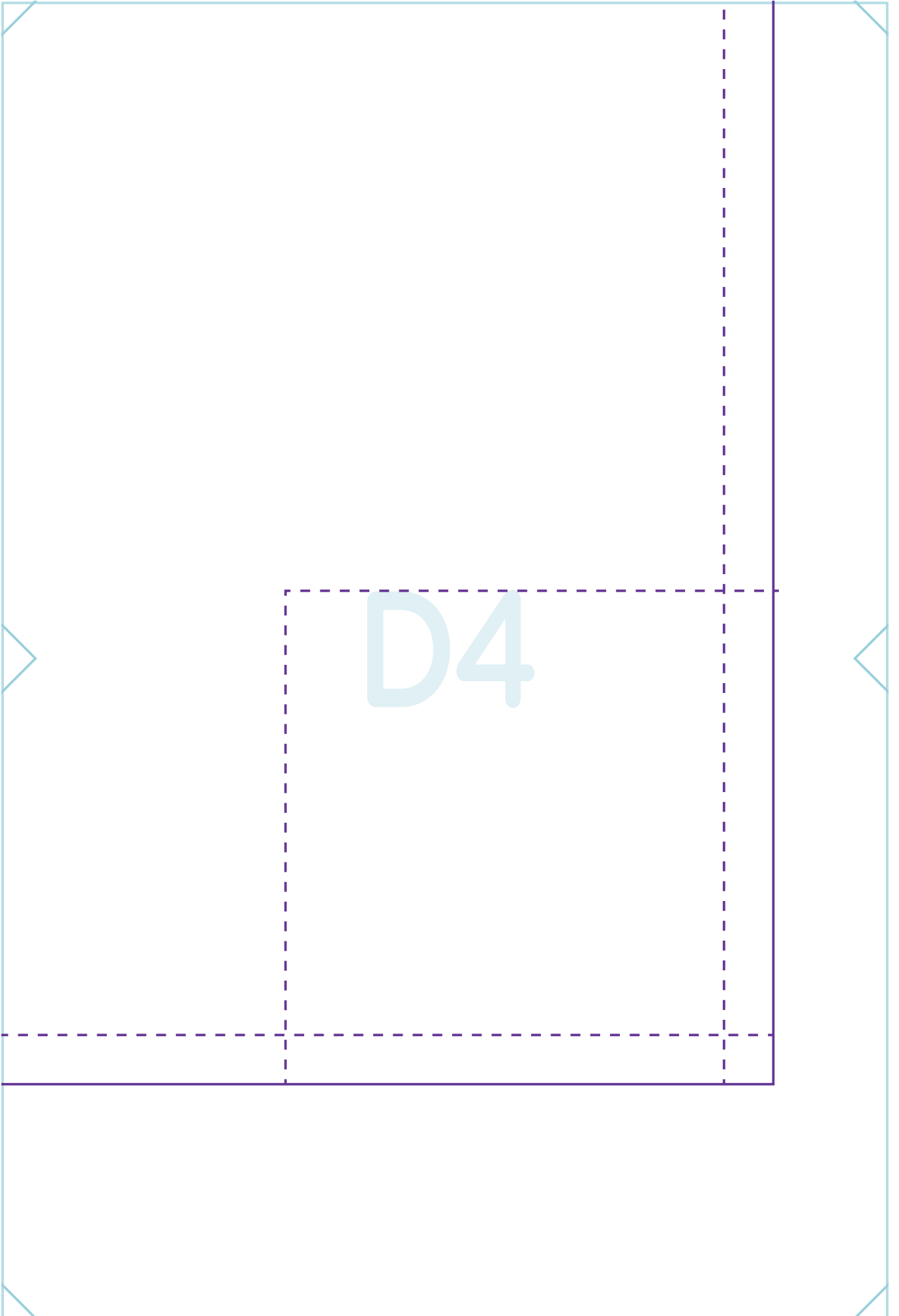
C5



D1



D3



D5