



Kimono Peg Bag Instructions

Step 1

Decide on the Fabric for your Bag inside and outside. Should they be the same colour or maybe a contrasting colour.

- Pattern Piece 1 = Cut 1 x Outer Fabric.
- Pattern Piece 1 = Cut 1 x Lining Fabric.
- Pattern Piece 1 = Cut 1 x Compressed Batting.

- Pattern Piece 2 = Cut 1 x Outer Fabric.
- Pattern Piece 2 = Cut 1 x Lining Fabric.
- Pattern Piece 2 = Cut 1 x Compressed Batting.

- Pattern Piece 3 = Cut 1 x Outer Fabric.
- Pattern Piece 3 = Cut 1 x Lining Fabric.
- Pattern Piece 3 = Cut 1 x Compressed Batting.

Step 2

Cut the following strips of contrasting fabric for trims.

5cm x 50cm for a bow.

5cm x 15cm & 5cm x 30cm for neck trim.

Step 3

Sandwich Compressed Batting in between Piece 2 lining and outer fabric, quilt through if you like.

Sandwich Compressed Batting in between Piece 3 lining and outer fabric, quilt through if you like.

Overlock the little Flap on Piece 3 for later attachment.

Cut away 1cm at the 2 neckline edges and use neck trim strips edge Piece 2 & 3 neckline. Place Piece 2 over Piece 3 with little flap behind Piece 2 and topstitch to attach two front pieces as One. Attach bow to the long V edge as decoration.

Step 4

Align the wrong side of Outer Fabric Piece 1 to the Compressed Batting Piece 1, quilt through if you like. Do not attach the Lining Piece 1 in the quilting process.

Step 5

Lay down the Quilted Piece 1 Right Side Up.

Place Quilted Piece 2/3 Face Down onto Piece 1.

Inset your Hanger with Hook at top.

Then Place Lining Piece 1 Face Down onto Piece 1/2/3.

Step 6

Sew all around the edges leaving a 10cm Turn Out Hole at the Top Centre, also pull hanger hook through this opening. Be careful not to sew over your hanger.

Turn Peg Bag Right Side Out with the Lining on the inside.

Fabric

1/2 meter outer fabric

1/2 meter lining fabric

1/2 meter Double sided Fusing(Spiderweb)

1/2 meter Compressed Batting

Hanger of your choice

Fat Quarter of contrast fabric for binding and bow or 1m Bias binding

Supplies:

Seralon thread

Tools:

Sewing machine bobbins

Fabric scissors

Fabric marker/ tailors chalk

Pins

Fabric clips

Prym mini steam iron

Mini ironing board

Rotary cutter

Self-healing cutting mat.

Quilting ruler

Quilting ruler handle

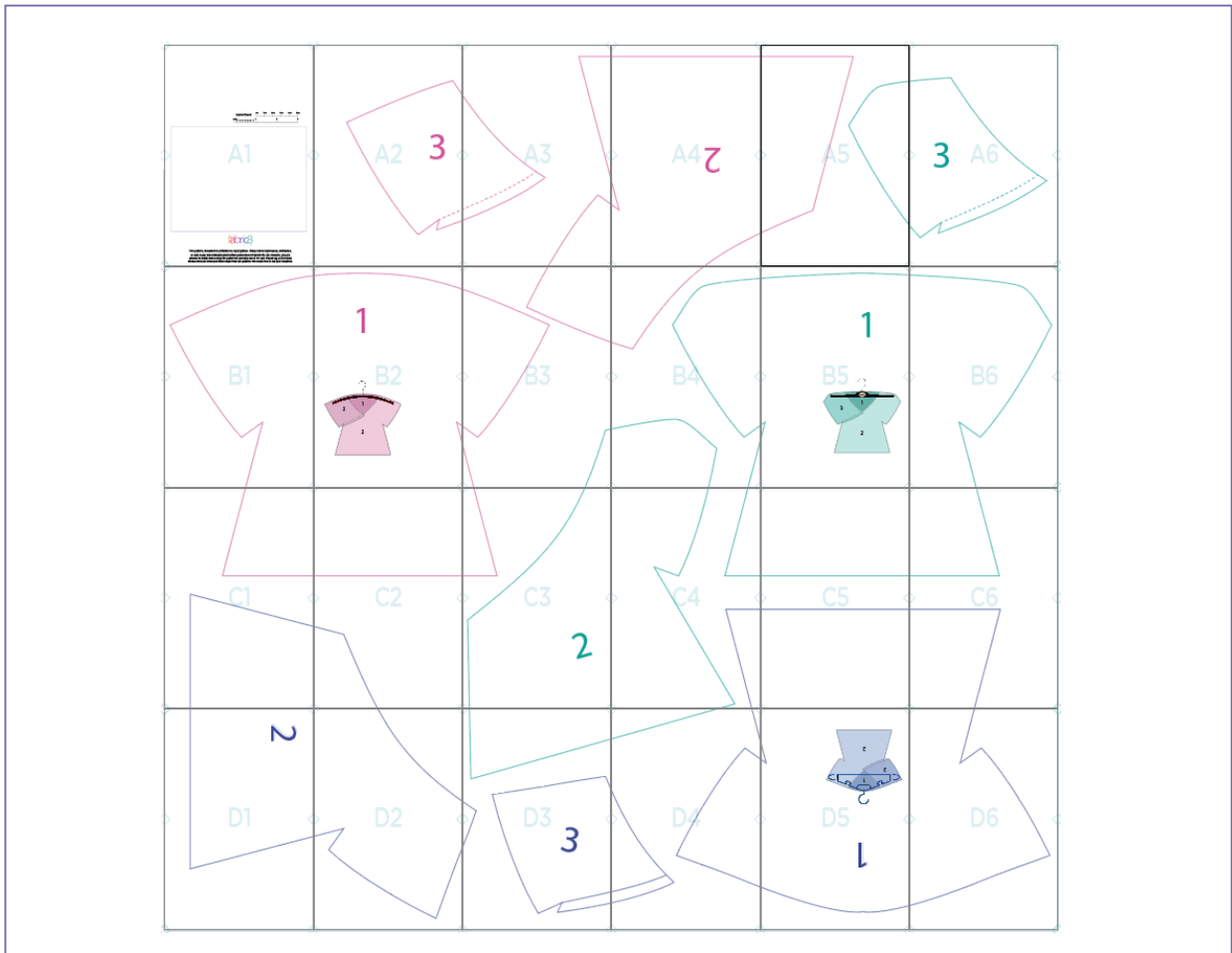
Paper scissors

Paper glue

Tape measure.

Hand sewing needle.

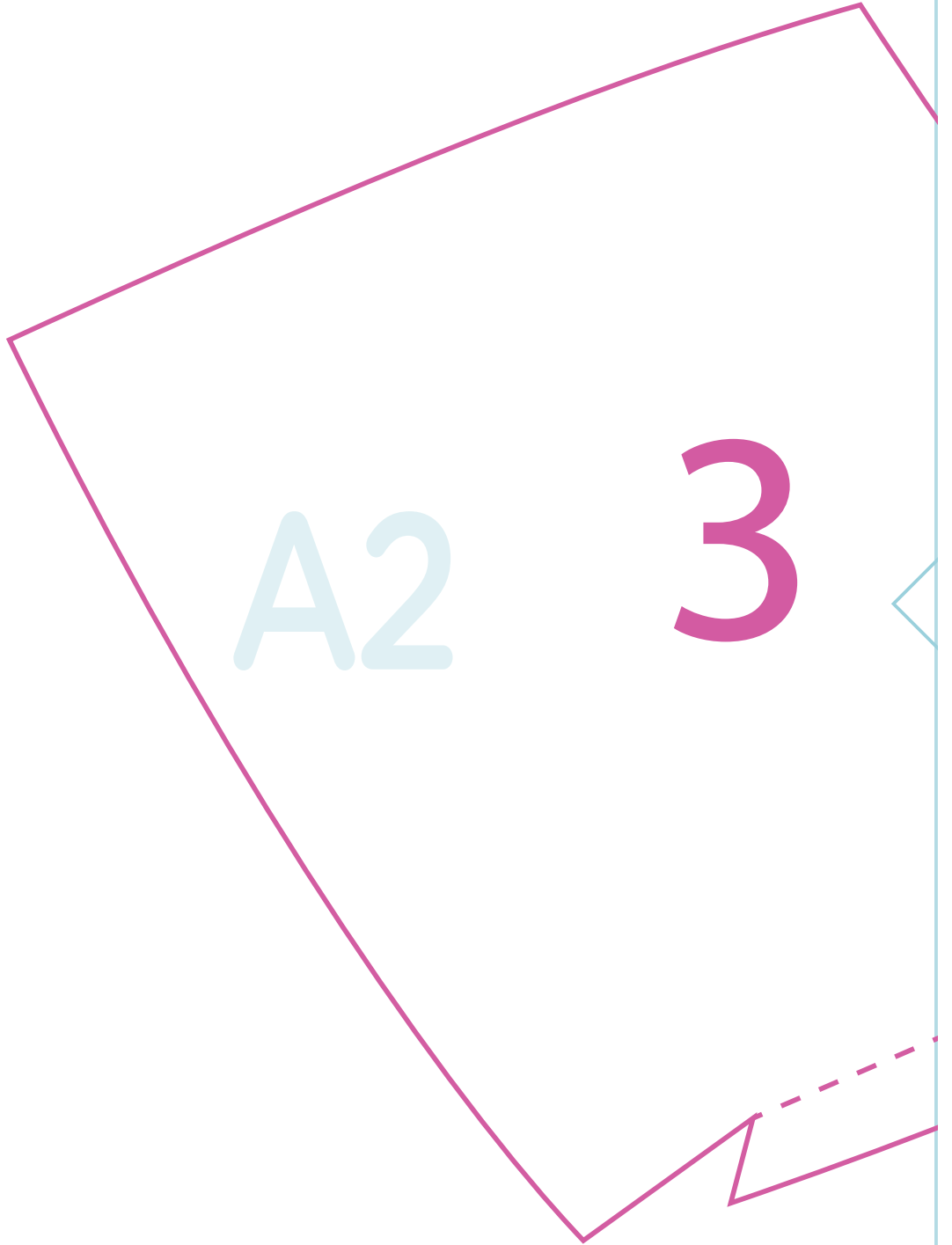
Scale Check



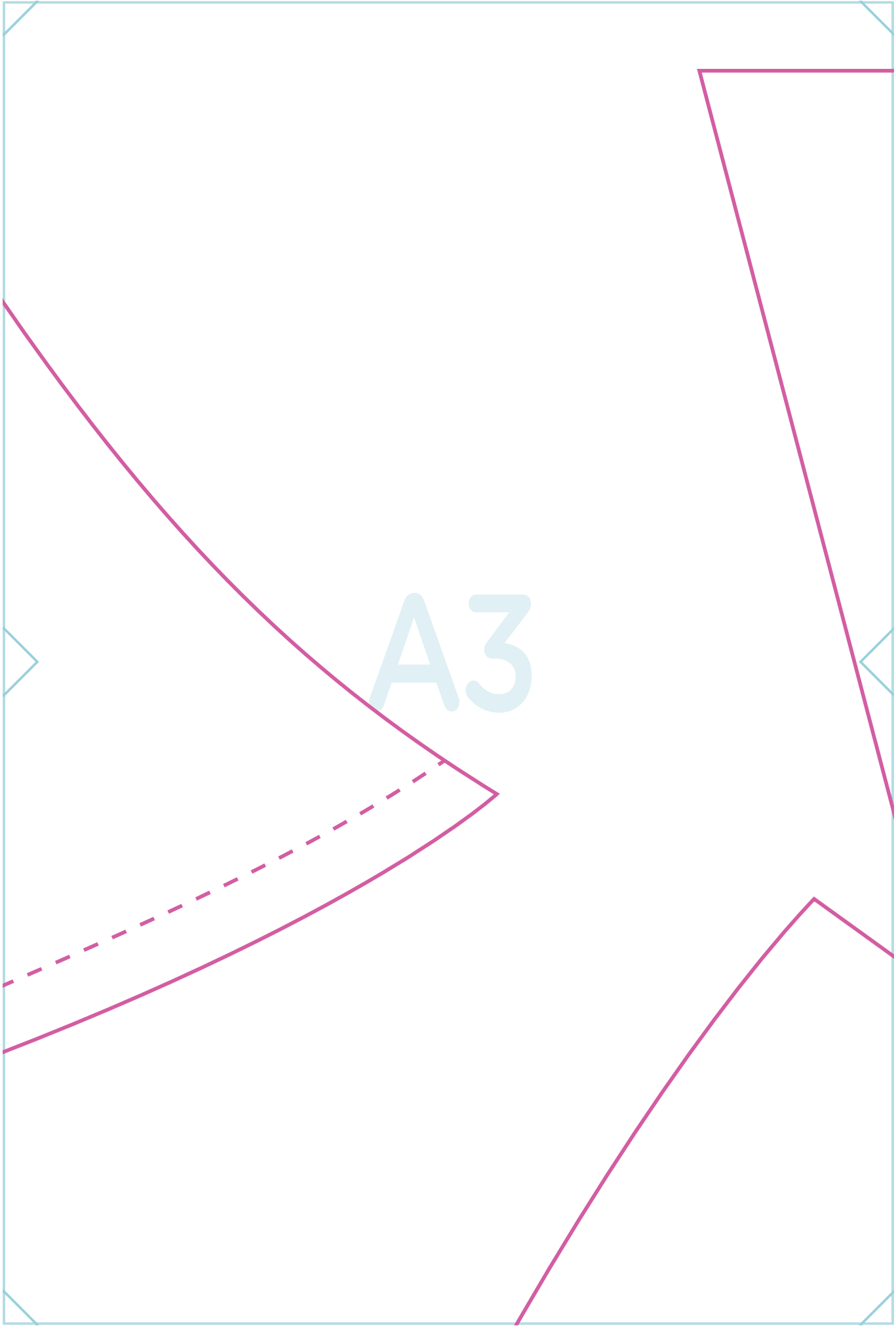
This pattern / document is protected by copyright law. It may not be reproduced, distributed, or sold in any form without explicit written permission of Fabric8 Pty Ltd. However, you are allowed to create items using this pattern for personal use or for sale. Please tag us on social media when you showcase items made from our patterns. We would love to see your creations.

A2

3



A3



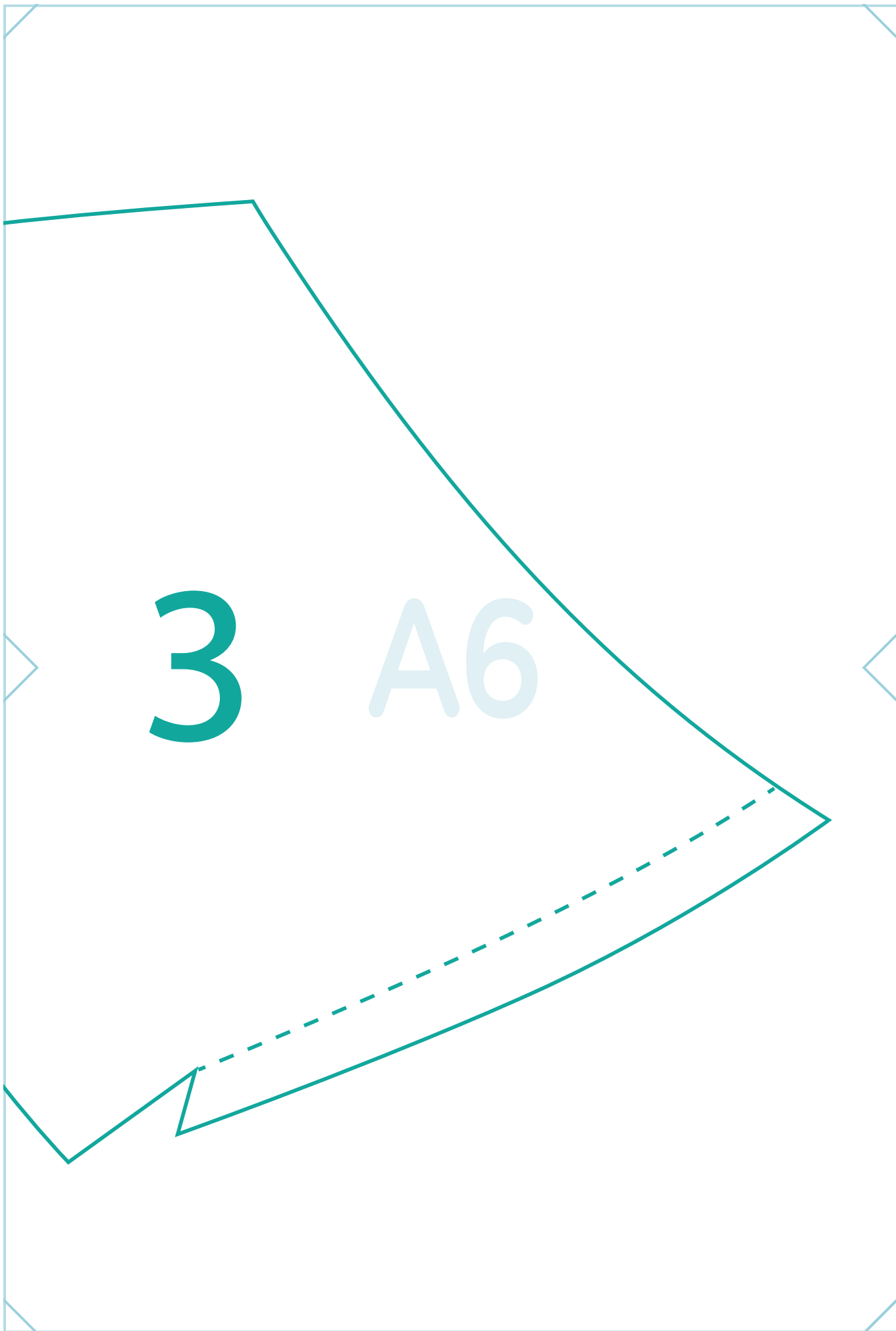
A4 2

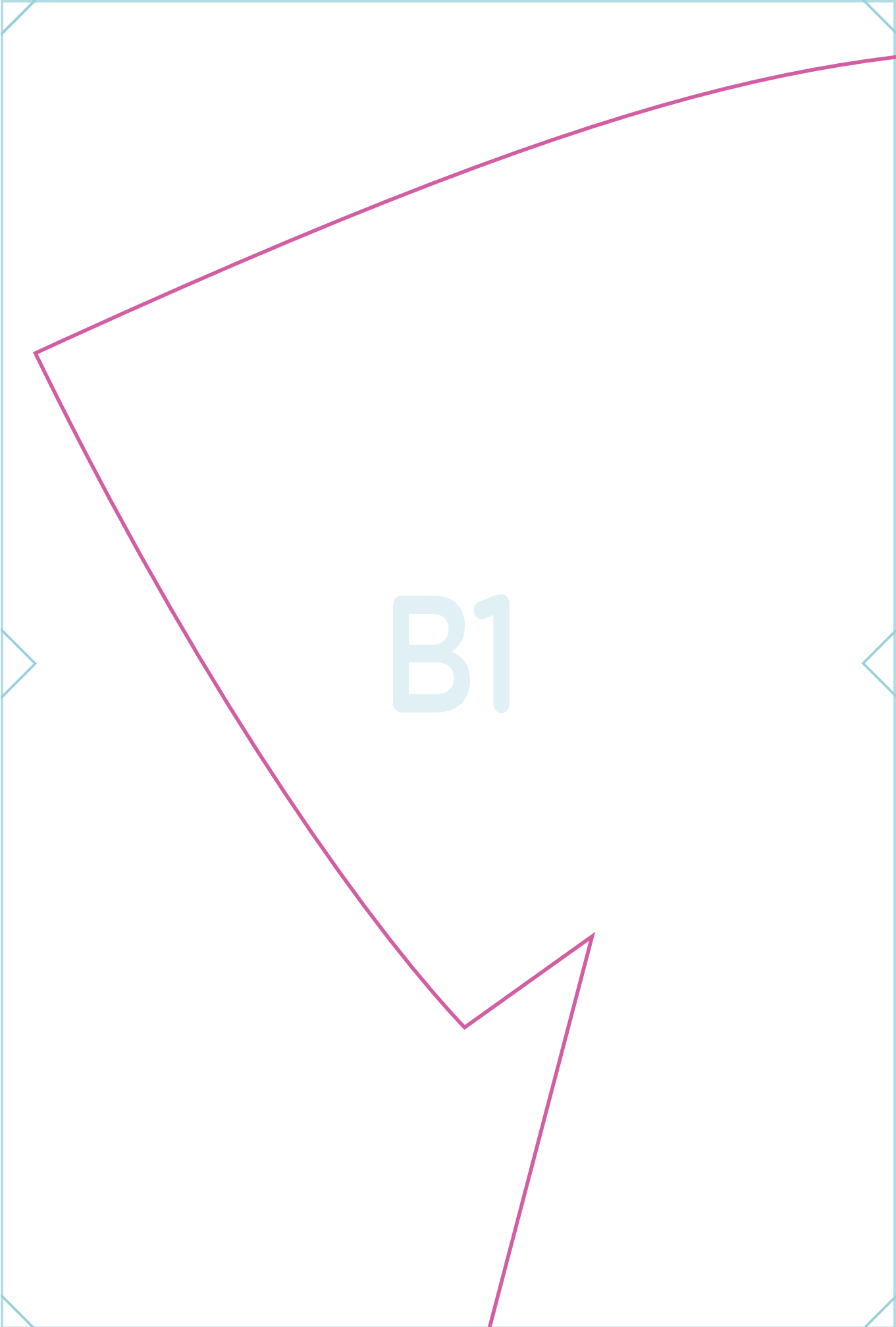
A5



3

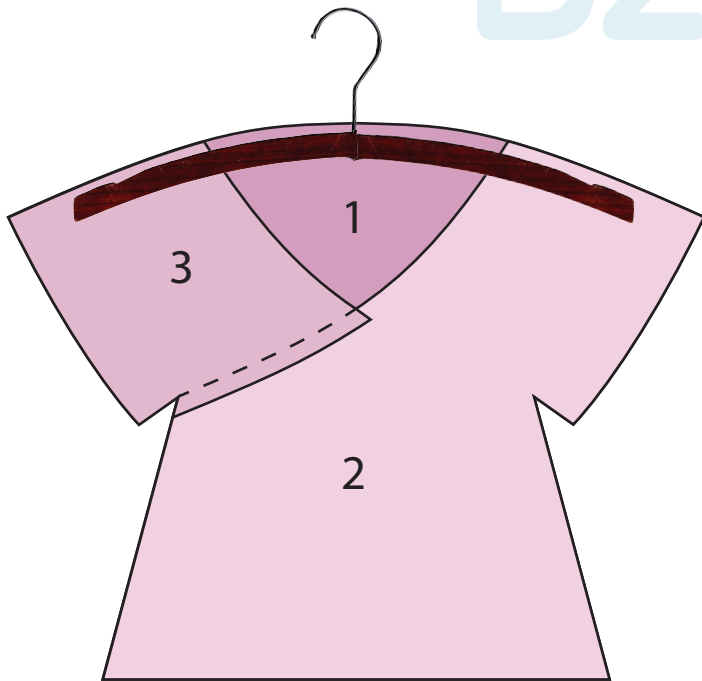
A6



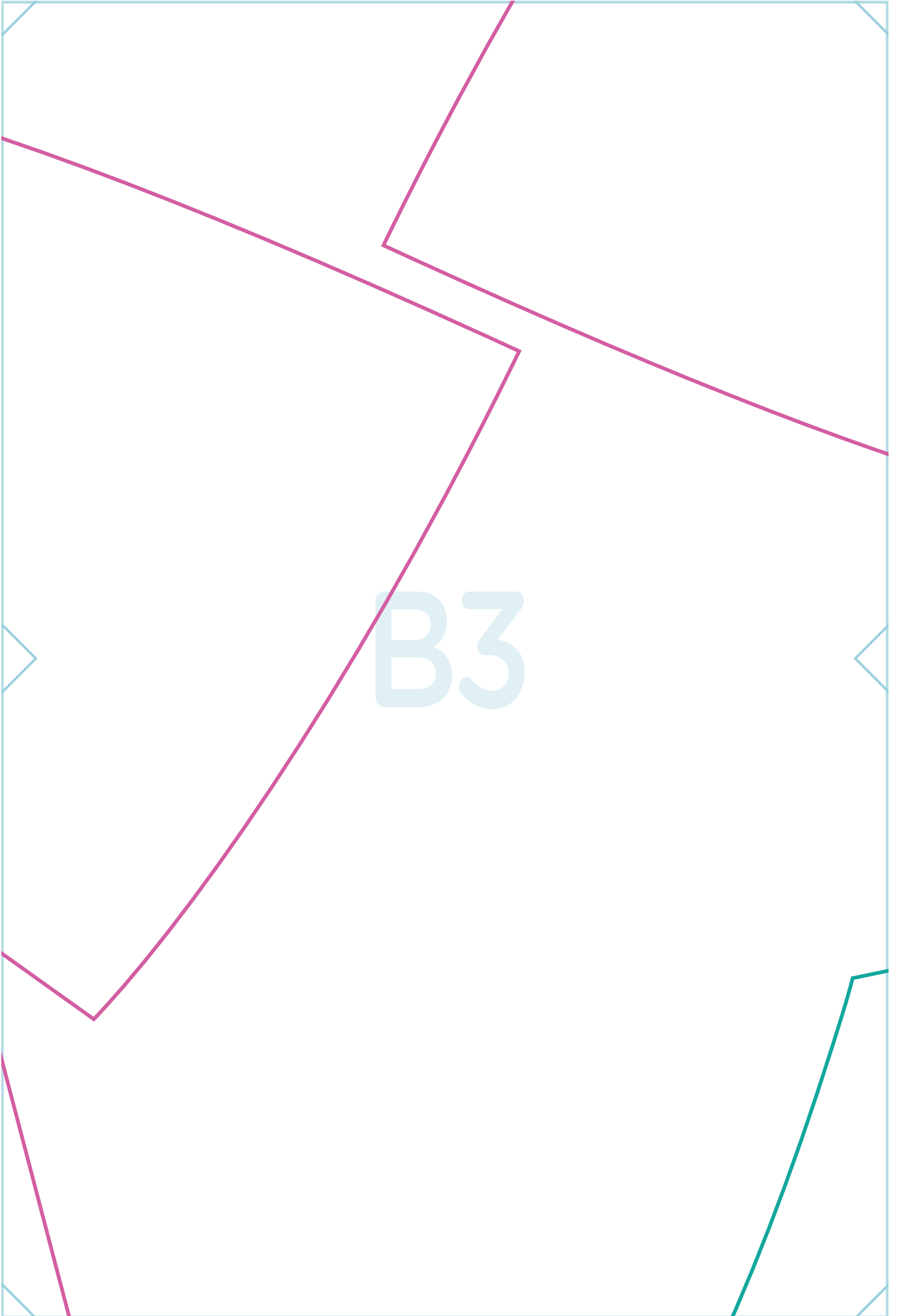


1

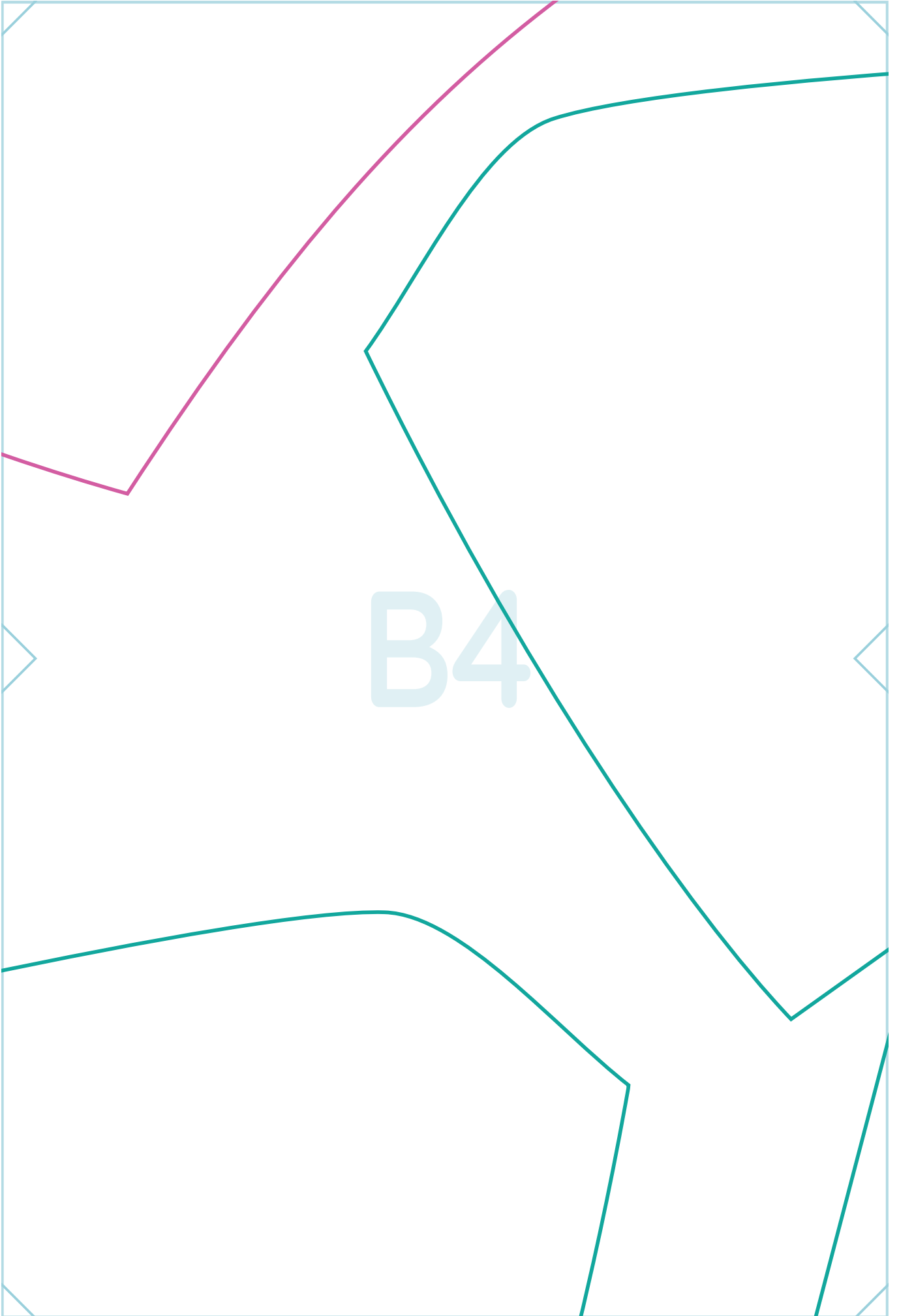
B2



B3

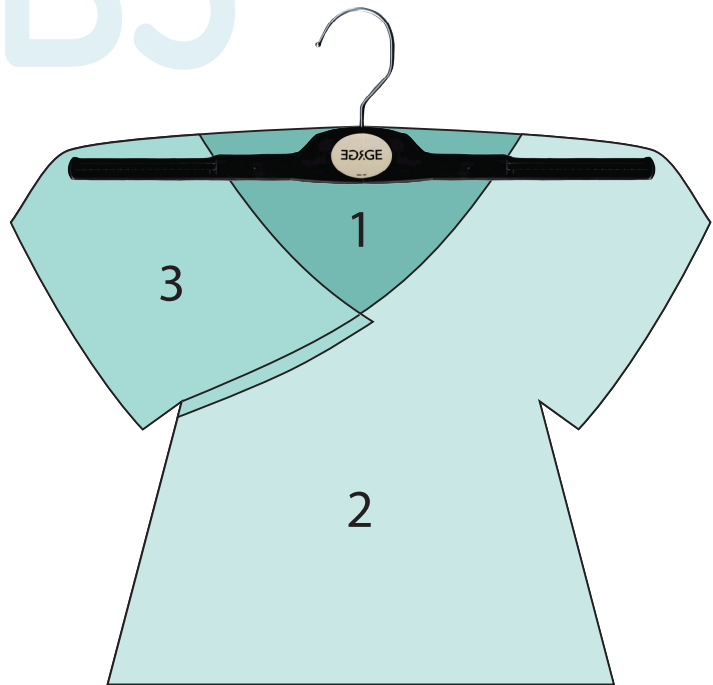


B4



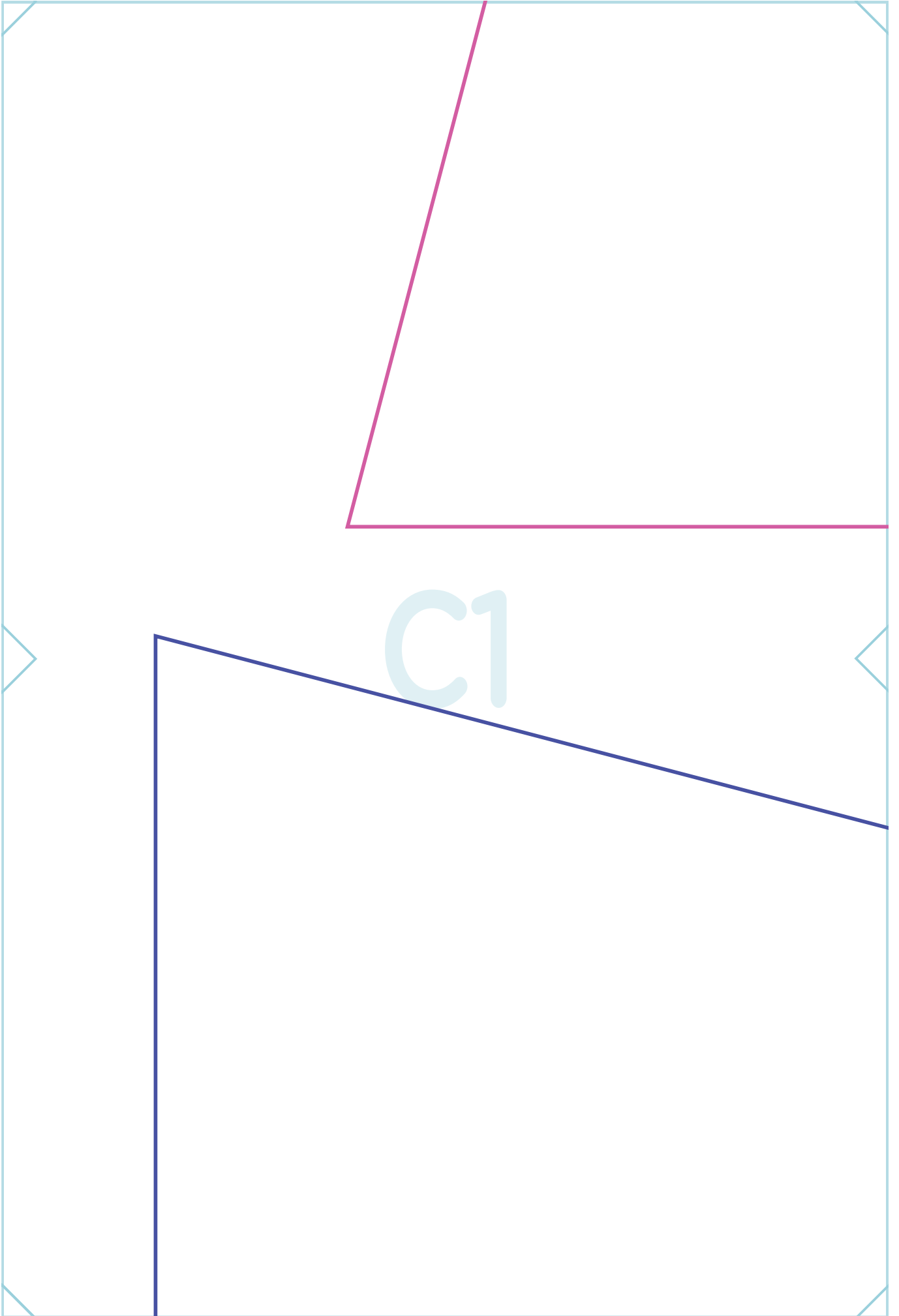
1

B5

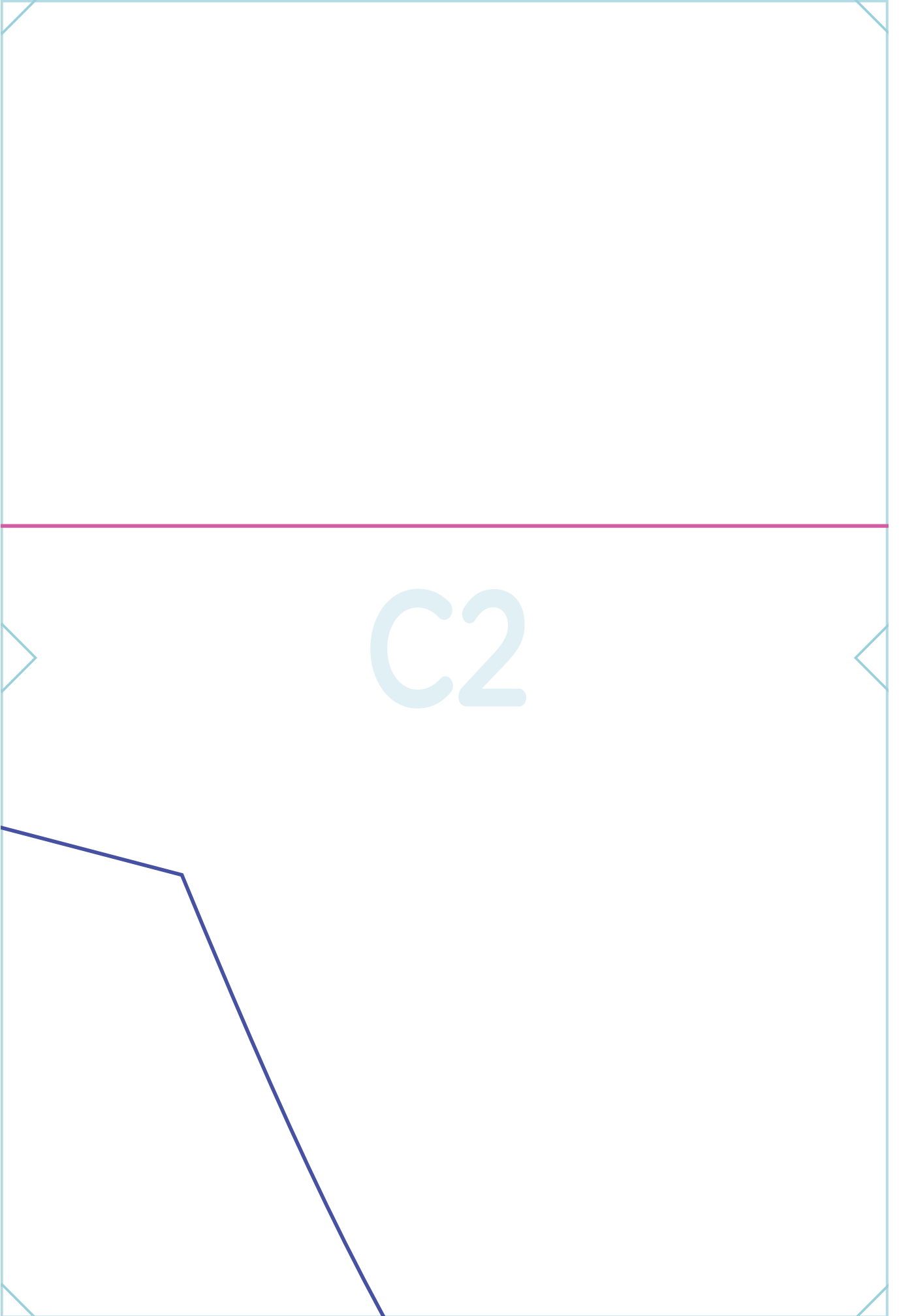


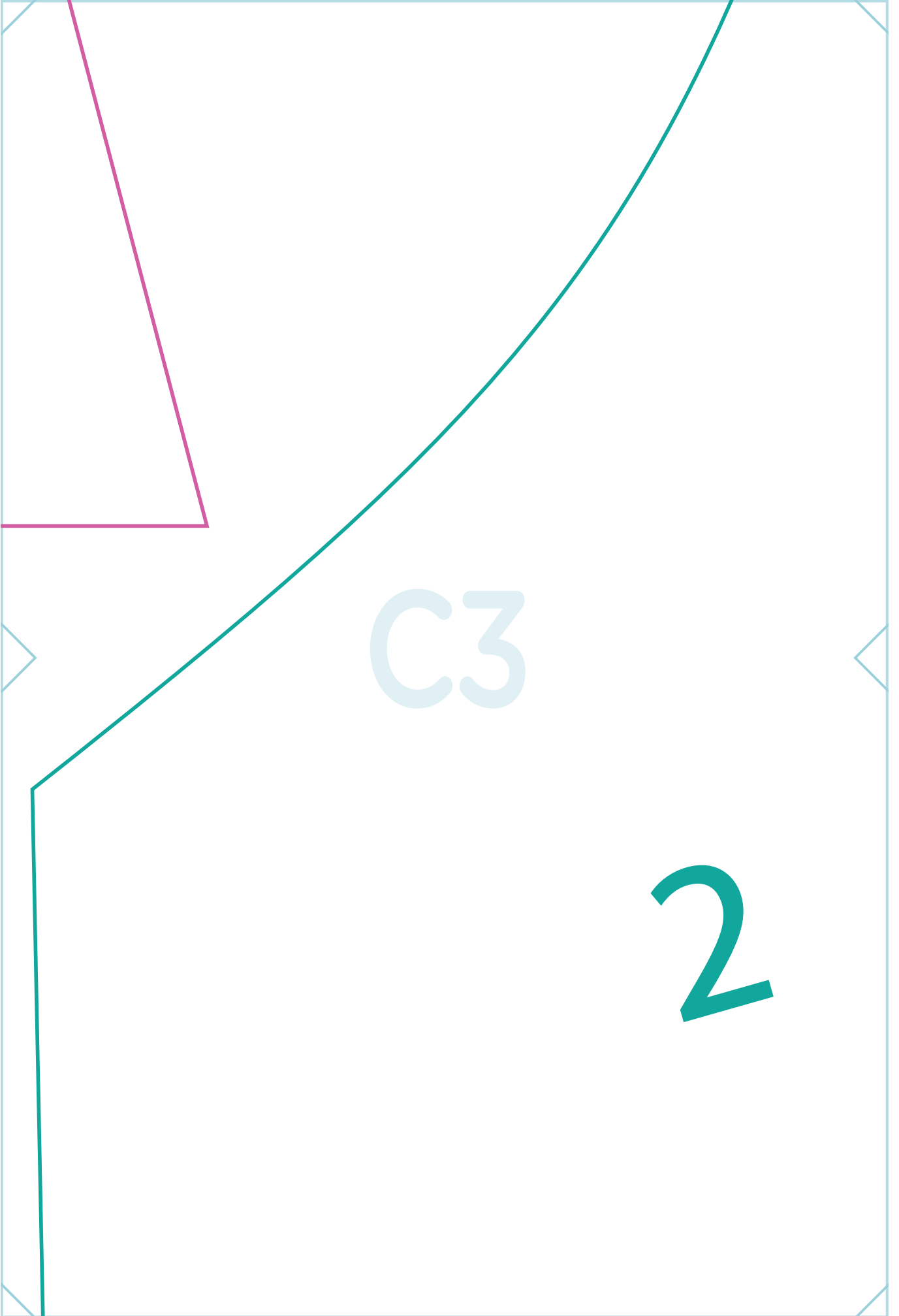


B6



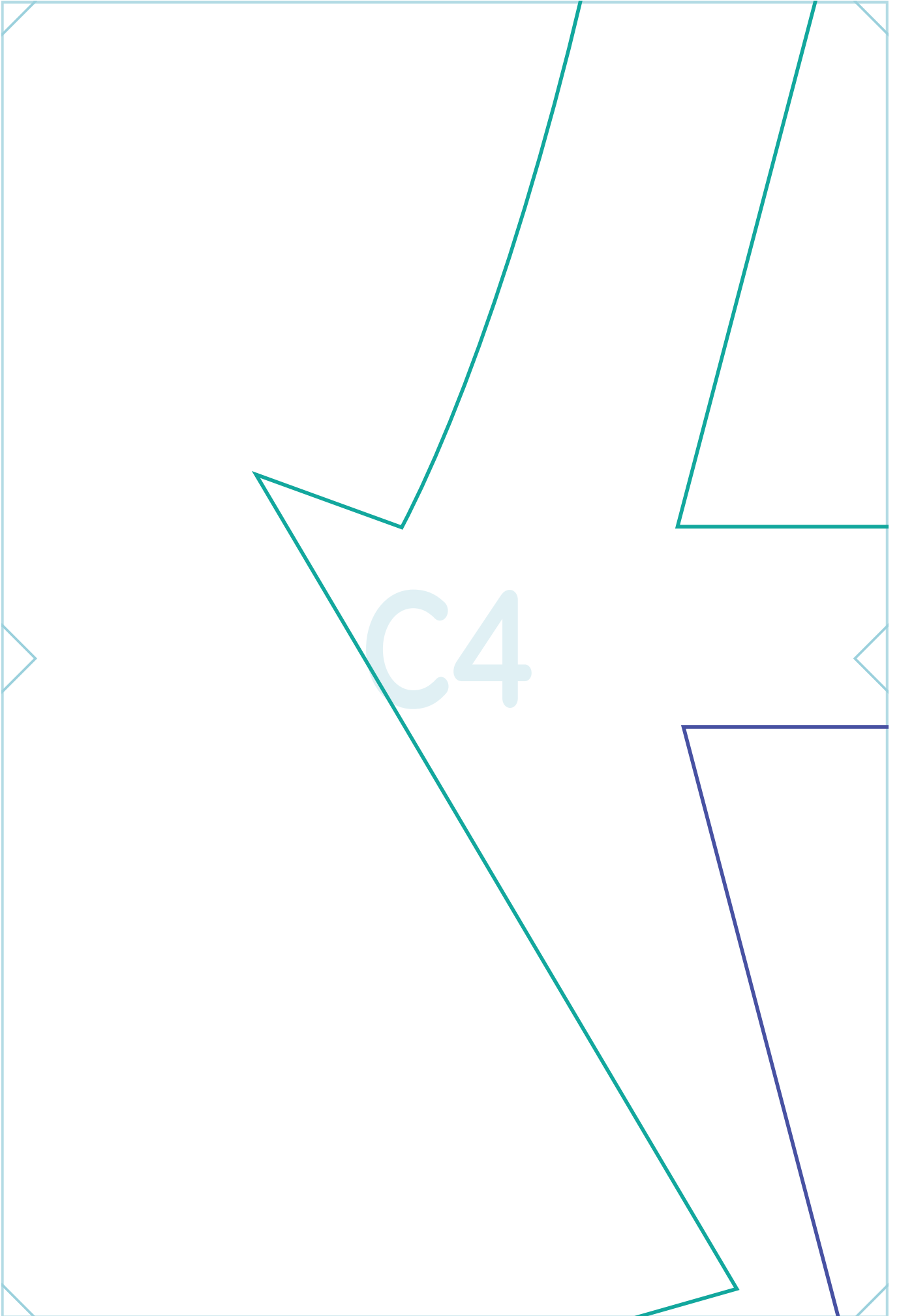
C2





C3

2



C5

C6

2

D1



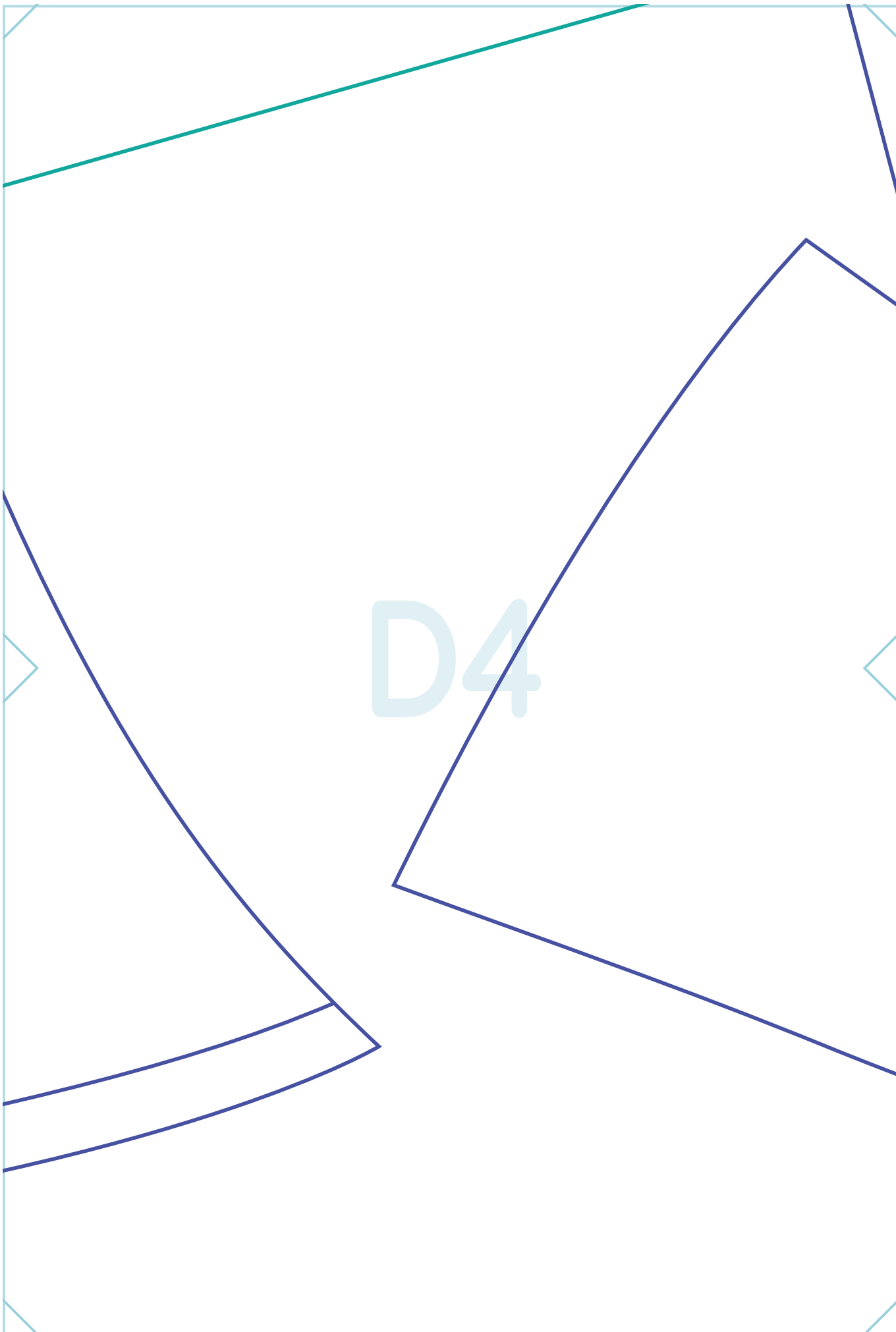
D2

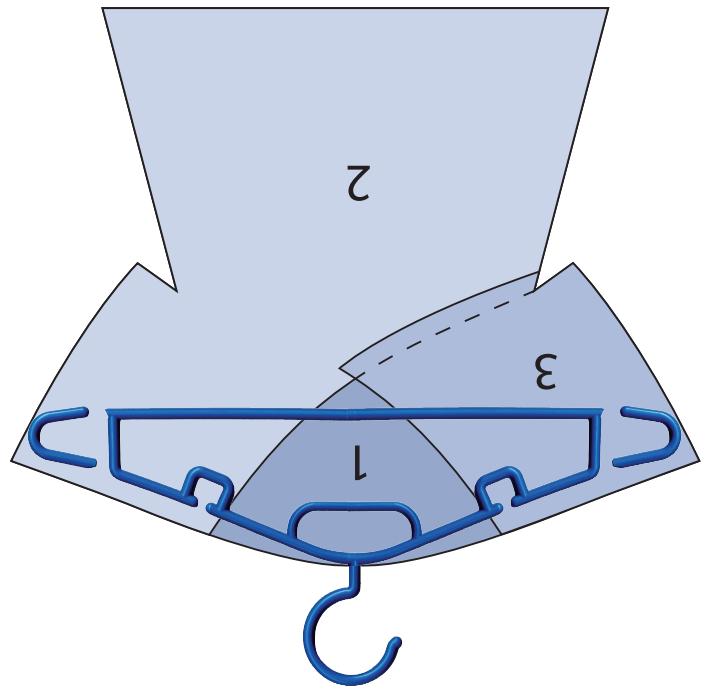


D3

3

D4





D5



D6

