

Oh So Fit Duffel Bag Instructions

Step 1

Decide on the Fabric for your Bag inside and outside. Should they be the same colour or maybe a contrasting colour.

- ☐ Cut 2 x Outer Fabric Bag Body.
- ☐ Cut 2 x Lining Fabric Bag Body.
- ☐ Cut 2 x Compressed Batting Bag Body.
- ☐ Cut 2 x Exterior Accent Pieces
- ☐ Cut 2 x Outer Fabric Zip Gusset
- ☐ Cut 2 x Lining Fabric Zip Gussets
- ☐ Cut 2 x Compressed Batting Zip Gusset
- ☐ Cut 1 x Outer Fabric Bottom Gusset
- ☐ Cut 1 x Lining Fabric Bottom Gusset
- ☐ Cut 1 x Compressed Batting Bottom Gusset

For Single Side Pocket

- ☐ Cut 2 x Cargo Pockets
- ☐ Cut 4 x Pocket Flaps

For 2 Side Pockets

- ☐ Cut 4 x Cargo Pockets
- ☐ Cut 8 x Pocket Flaps

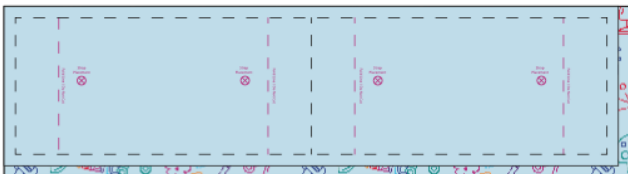
For Handles if not using ready made strapping

- ☐ Cut 2 x Fabric Handles
- ☐ Cut 2 x Fusing Handles

Step 2

Make Cargo Pockets:

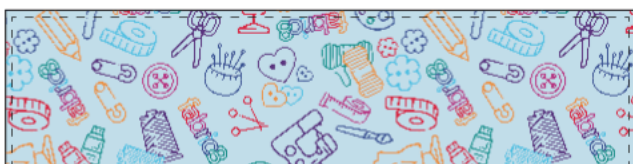
Fuse interfacing to Cargo Pocket Outside Fabric piece. Place Cargo Pocket Outside Fabric & Lining piece, Right Side to Right Side. If making front & back pockets repeat for second pocket



Pin and sew along sides and top edge.



Clip corners. Turn right side out. Point out corners with point turner. Iron and Topstitch along 2 sides and top of pocket.



Mark Centre- & Pleat Pattern Marking on Right Side. If using Magnetic bag clasps insert them now to the outside fabric at pattern markings.



Fold Pleats as shown below. Pin in place & Iron.



Edgestitch along each pleat to hold in place. Iron.

Step 3

Pocket Flaps:

Fuse interfacing to Outside Fabric Pocket Flaps. Place Pocket Flap Outside & Lining pieces Right Side to Right Side. Sew around 2 sides and curved top side.

Clip corners. Turn right side out. Iron and Topstitch along 2 sides and curved top of pocket. If using Magnetic bag clasps insert the other side of clasps now to the outside fabric at pattern markings.

Step 4

Attaching Pocket and Accent piece to Main Bag Body:

Mark Pocket Placement horizontal line from your pattern on to your Main Bag Body.

Centre and align pocket to front at Pattern Mark line overlapping with the 1cm seam allowance. Stitch pocket in place, Sew up the centre line in between 2 pleats and along the each edge, lifting pleats out of the way so as to leave them free and able to expand when used. Baste bottom of Cargo Pocket in place.

Iron back Accent piece seam allowance 1cm on one long side. Match up the bottom raw edge of Accent piece and Main Bag Body. Pin in place with top folded edge overlapping the bottom Cargo Pocket raw edge. Sew Topstitch at top folded edge securing the Accent piece top and the Cargo Pocket bottom. Iron and baste the Accent piece at the 3 other sides to the Main Bag Body to keep in place.

If making front & back pockets repeat for second pocket and accent piece.

If only making pocket on one side Secure accent piece exactly like you did for pocket except there will be no pocket.

Step 5

Attaching Pocket Flaps:

Mark Placement of Pocket Flaps from Pattern on Main Bag Body.

Fold back 1cm seam allowance at the top of pocket flaps and iron.

Place and pin Pocket Flaps in place and Topstitch in place.

Step 6

Sew Zip Gusset:

Using Outside Fabric and Lining Zip Gusset pieces, sandwich your zip on both sides. Iron, and do a topstitch on right side, on both side of zip. Close zip and Baste the Outside fabric and lining together all around the edges, making it into one piece.

Place Outside Fabric and Lining bottom gusset wrong side to wrong side and baste all around to keep in place.

Sew Zip Gusset and Bottom Gusset Pieces together at the short ends, right side to right side, making a loop and completing the gusset. Bind the 2 raw edges if desired.

Step 7

Attaching Handles and Gusset:

Sew Handles and Topstitch a few lines to make them stronger. Mark Handle placements from pattern and baste handles in place, make sure to not twist handles, at top of Main bag body matching raw edge to raw edge.

Mark center of Main Bag Body front/back pieces at top and bottom edges. Mark center of Bottom Gusset and Zip Gusset at top and bottom edges.

Match center of Zip Gusset to the top marked center of Main Bag Body Front, right side to right side. Pin to hold in place. Now match center of Bottom Gusset to the bottom marked center of Main Bag Body, right side to right side. Pin to hold in place. Pin and sew all around, attaching one side of gusset. Now open zip and repeat on other side of gusset with Main Bag Body Back. Bind the raw edges if desired.

Fabric:

- 1 meter outer fabric
- 1 meter lining fabric
- 1/2 meter Fusing
- 1 meter Compressed Batting
- 4 Sets of Plastic Snaps or 4 Sets of Magnetic Bag Clasps
- 1 meter Strapping for Handles if needed
- 2 meter Bias binding

Supplies:

Seralon thread

Tools:

- Sewing machine bobbins
- Fabric scissors
- Fabric marker/ tailors chalk
- Pins
- Fabric clips
- Prym mini steam iron
- Mini ironing board
- Rotary cutter
- Self-healing cutting mat.
- Quilting ruler
- Quilting ruler handle
- Paper scissors
- Paper glue
- Tape measure
- Hand sewing needle.

Scale Check



A1



This pattern / document is protected by copyright law. It may not be reproduced, distributed, or sold in any form without explicit written permission of Fabric8 Pty Ltd. However, you are allowed to create items using this pattern for personal use or for sale. Please tag us on social media when you showcase items made from our patterns. We would love to see your creations.

A2

A3

fab
Oh So
Duffel

ZIPPER G

Cut x 2 Outer
Cut x 2 Fusible
Cut x 2 Lining
1cm Seam Allowance



Oh So Fit Duffel Bag

BOTTOM GUSSET

Cut x 1 Outer Fabric
Cut x 1 Fusible Batting
Cut x 1 Lining Fabric
1cm Seam Allowance Incl

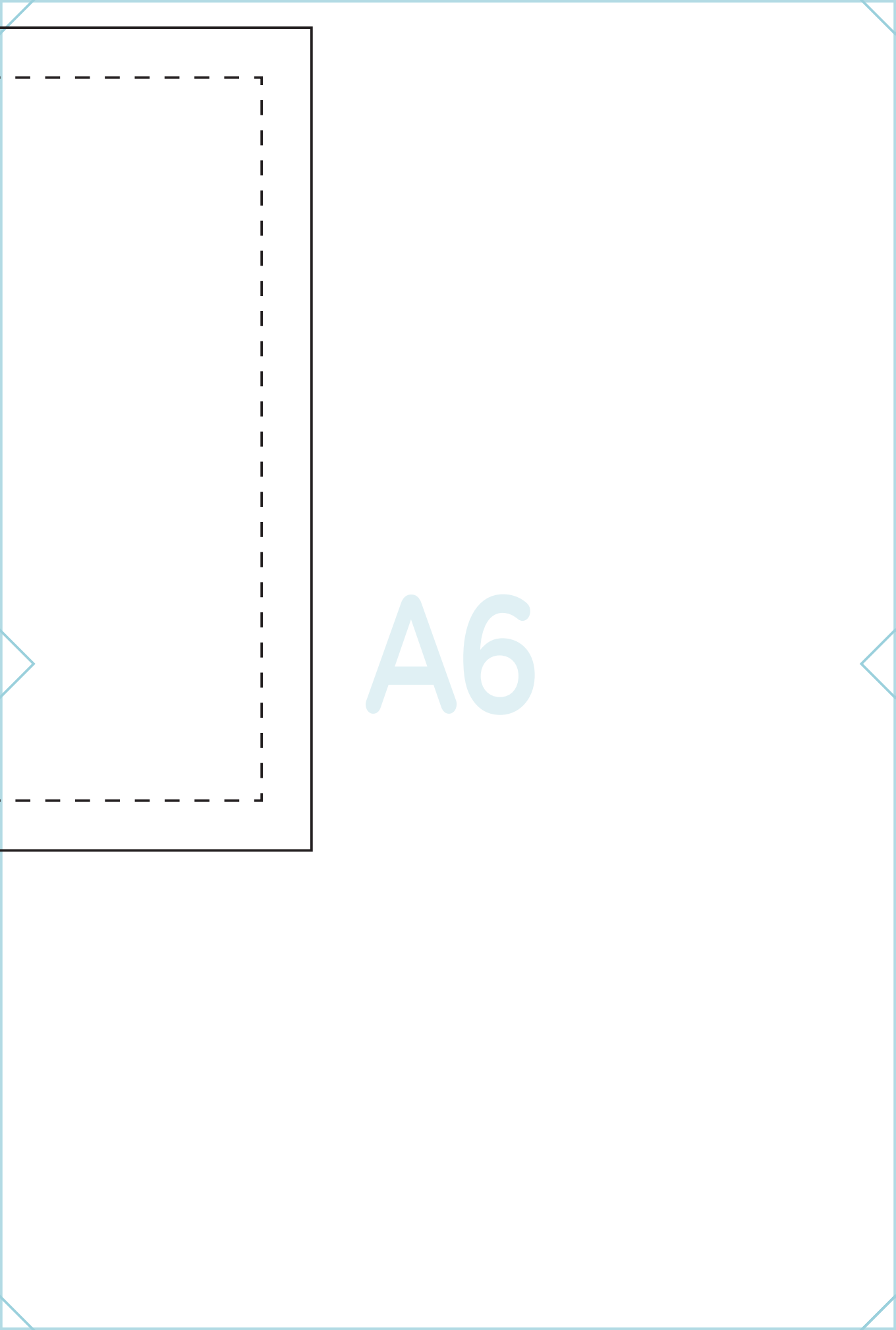
A4



BOTTOM GUSSET

Cut x 1 Outer Fabric
Cut x 1 Fusible Batting
Cut x 1 Lining Fabric
1cm Seam Allowance Incl

A5



A6

B1

Pocket Flap
Placement

Handle
Placement

Pocket Placement



Oh So Fit Duffel Bag

MAIN BAG BODY

- Cut x 2 Outer Fabric
- Cut x 2 Fusible Batting
- Cut x 2 Lining Fabric
- 1cm Seam Allowance Incl

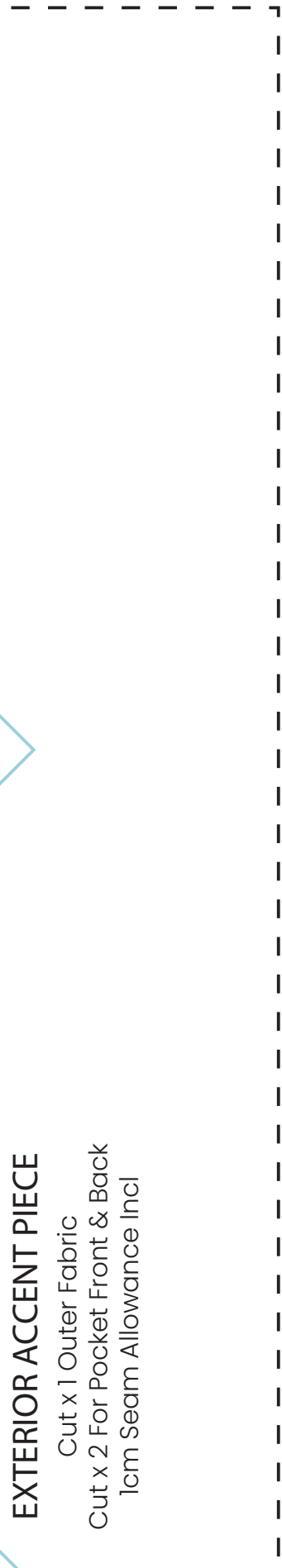
B2



Oh So Fit Duffel Bag

EXTERIOR ACCENT PIECE

Cut x 1 Outer Fabric
Cut x 2 For Pocket Front & Back
1cm Seam Allowance Incl



abric8
Oh So Fit
Duffel Bag

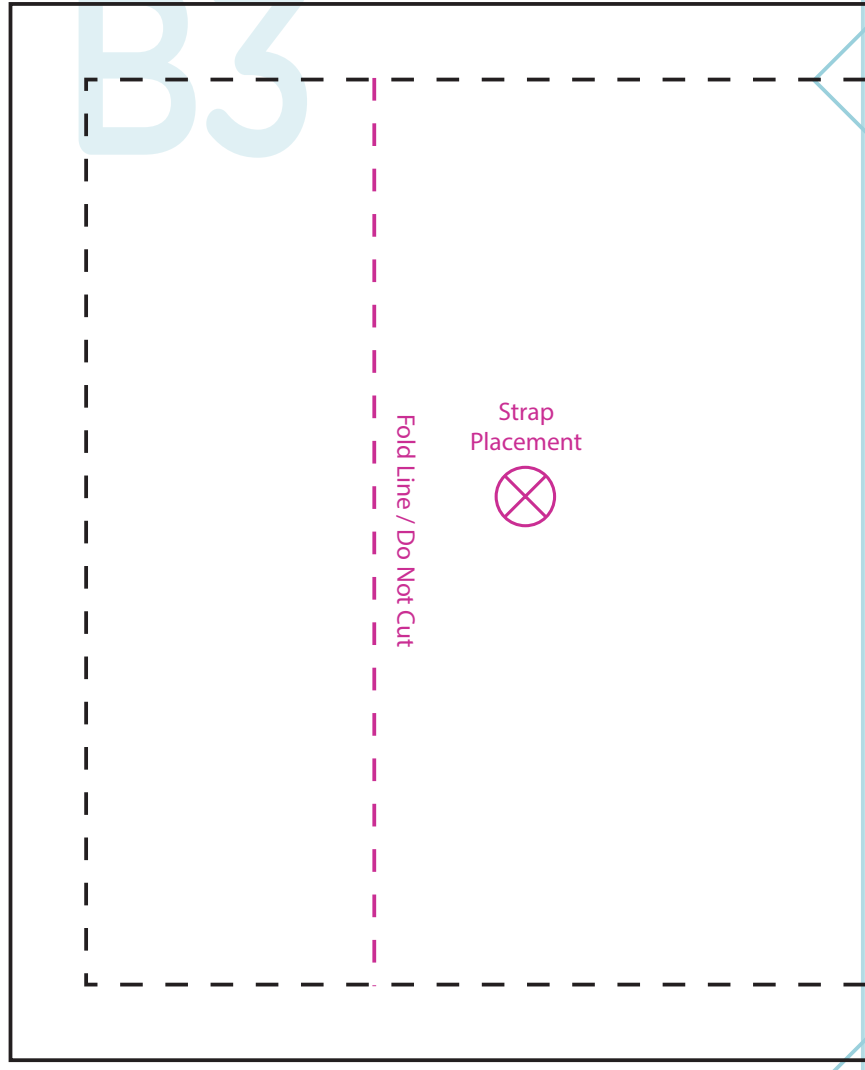
HANDLES

Cut x 2 Outer Fabric
Cut x 2 Fusing
1cm Seam Allowance Incl



B3

Fold Line / Do Not Cut



B4

Strap
Placement



Fold Line / Do Not Cut

B5

Fold Line / Do Not Cut

Strap
Placement



fabric8
Oh So Fit
Duffel Bag

POCKET FRONT & BACK

Cut x 1 Outer Fabric

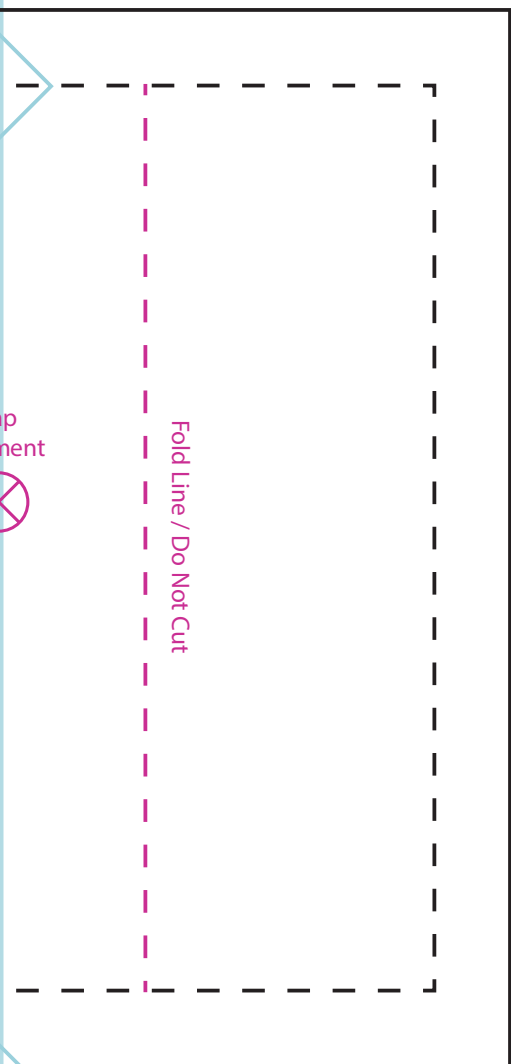
Cut x 1 Fusing

Cut x 2 For Pocket Front & Back

1cm Seam Allowance Incl

Strap
Placem





B6

Handle
Placement

Pocket Flap
Placement

C1

C2

C3



Oh So Fit
Duffel Bag

POCKET FLAP

Cut x 2 Outer Fabric

Cut x 2 Fusing

Cut x 2 Lining Fabric

1cm Seam Allowance Incl

Strap
Placement



Strap
Placement

