

valentines slip dress/ nighty

WATCH THE VIDEO TUTORIAL:



Youtube: <https://www.youtube.com/watch?v=Kdb6OU69Yu0>

PRINTING INSTRUCTIONS:

- Print only the first page with 1x1 inch and/ or 2x2 cm blocks on the first page
- Set printer to 100% scale
- Avoid "Print Entire Image" or "Fill Entire Paper" options, as this will make your pattern print at the wrong size
- Measure printed 1x1 inch & 2x2 cm blocks with a ruler for accuracy
- If sizing is correct, print all pages at 100% scale
- Assemble and cut out the pattern

SUPPLIES & TOOLS:

The items listed are conveniently hyperlinked to their respective pages on the Fabric8 website, if available. Simply click on the desired item, and it will effortlessly open up in your web browser for easy access and purchase.

Fabric:

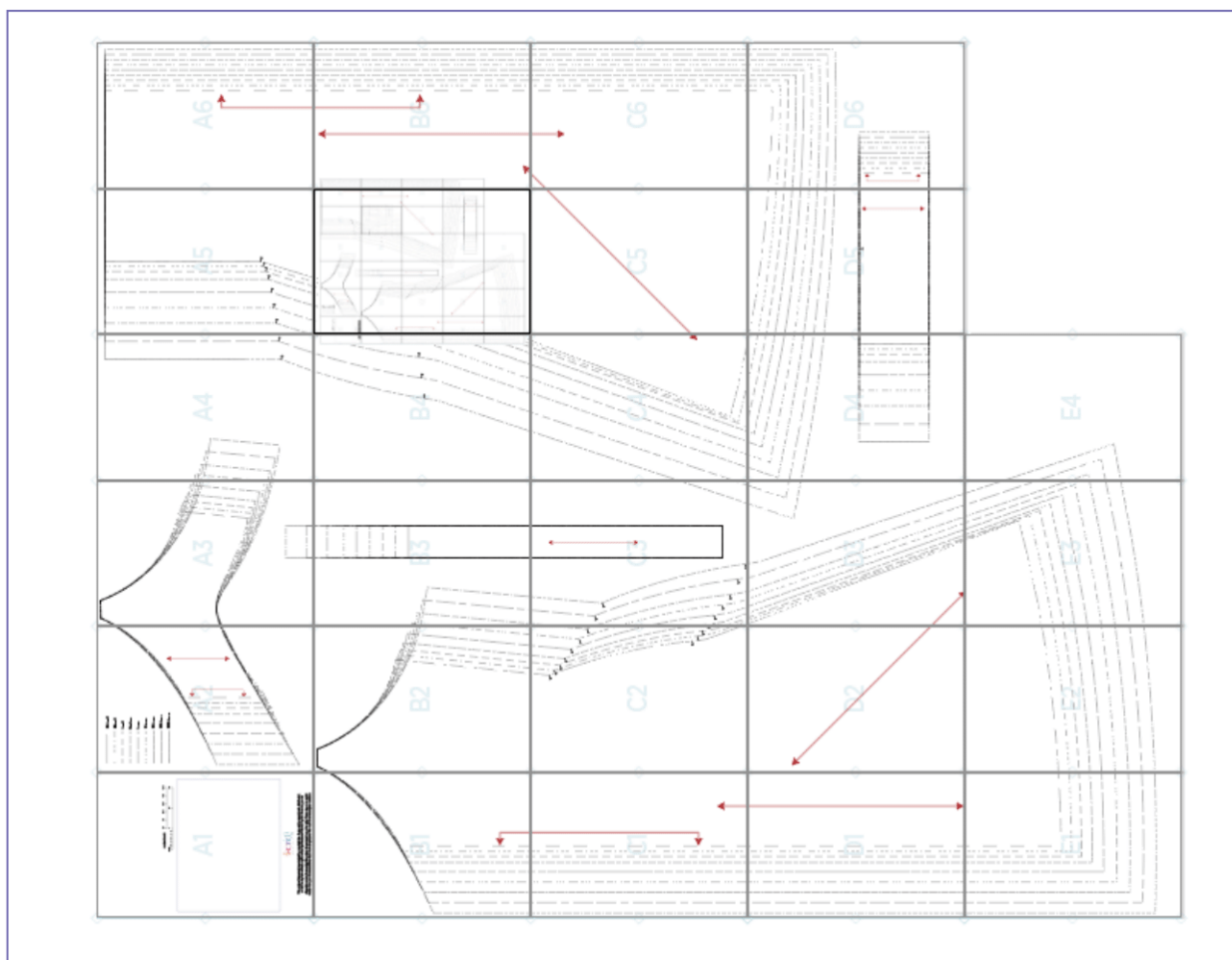
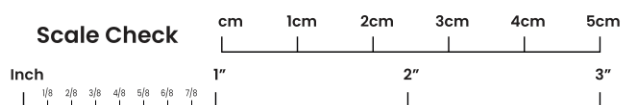
- [1.5m - 2.5m fabric](#)

Tools:

- [Rotary cutter](#)
- [Self-healing cutting mat](#)
- [Quilting ruler](#)
- [Quilting ruler handle](#)
- [Tape measure](#)
- [Hand sewing needle](#)
- [Sewing machine bobbins](#)
- [Fabric scissors](#)
- [Fabric marker/ tailors chalk](#)
- [Pins](#)
- [Fabric clips](#)
- [Prym mini steam iron](#)
- [Table sized ironing board](#)
- [Bias binding maker](#)
- [Bias binding presser foot](#)
- Paper scissors
- Paper glue
- [Kam pliers kit](#)

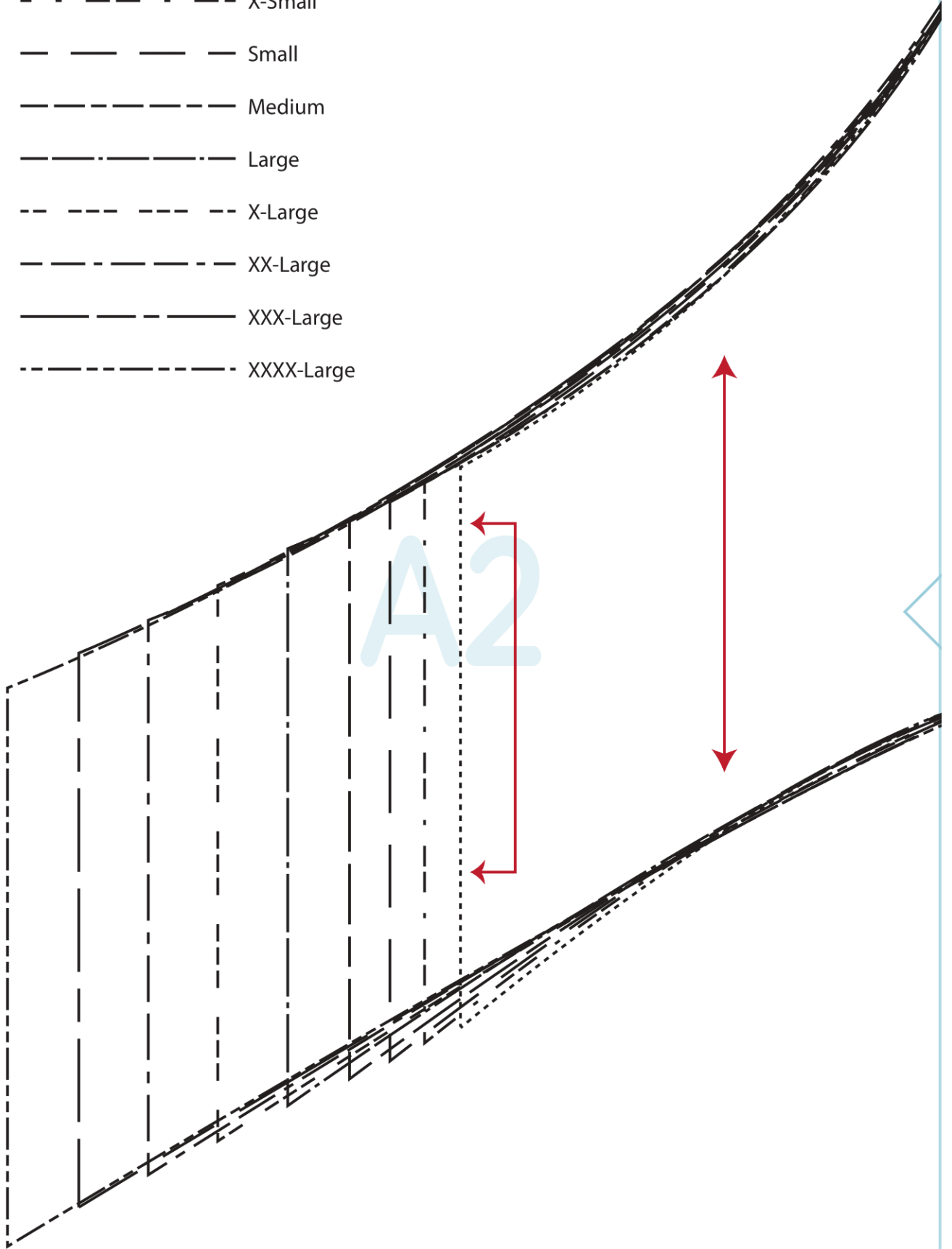
PRINTING INSTRUCTIONS:

1. Start by only printing this page with the measurement scale (as below).
2. Ensure that your printer settings are correct:
 - Set your printer to "Do not scale" or to "100% scale". Set to A4.
 - Make sure that you have not selected "Print entire image" or "Fill entire paper". This will make your sizing incorrect.
 - You have to print your pattern at 100% scale.
3. Using a ruler or measuring tape, measure the inches or centimeters on the measurement scale below once this page has been printed out. Ensure that the measurement scale lines up with your ruler or measuring tape. If it does, it means you have selected the correct printer settings.
4. If your measurement scale lines up correctly, print out the rest of the pattern pages at 100% scale.
5. Cut out and line up the lines of the pattern pages. Ensure that the triangles in the corner all line up. Stick your pattern together as illustrated below.



This pattern/ document is protected by **copyright** law. It **may not be reproduced, distributed, or sold** in any form without the explicit written permission of Fabric8 Pty Ltd. However, you are allowed to create items using this pattern for personal use or for sale. Please tag us on social media when you showcase items made from this pattern. We would love to see your creations.

- XX-Small
- . - . - X-Small
- - - - - Small
- - - - - Medium
- - . - - Large
- - - - - X-Large
- - - - - XX-Large
- - - - - XXX-Large
- - - - - XXXX-Large

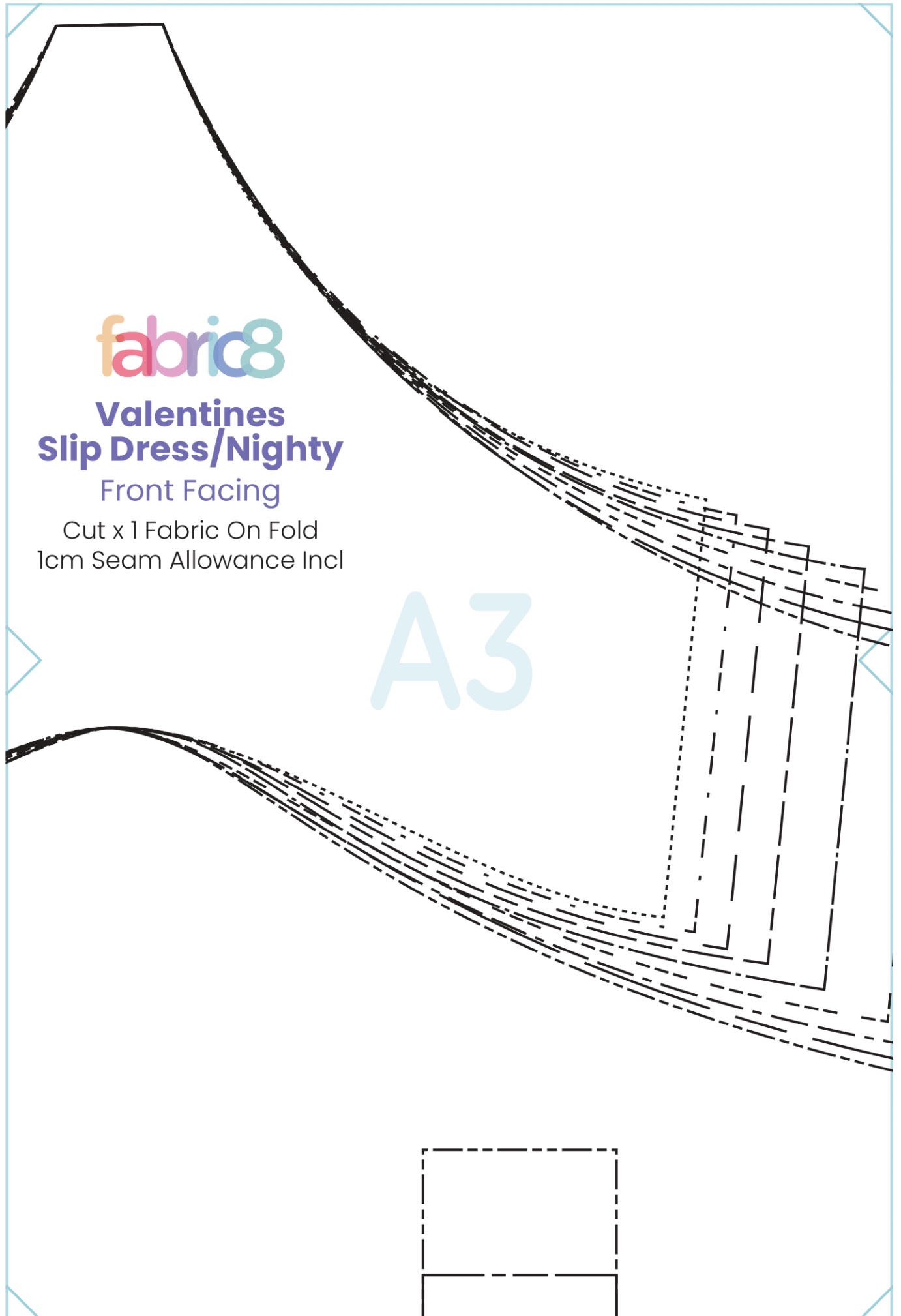




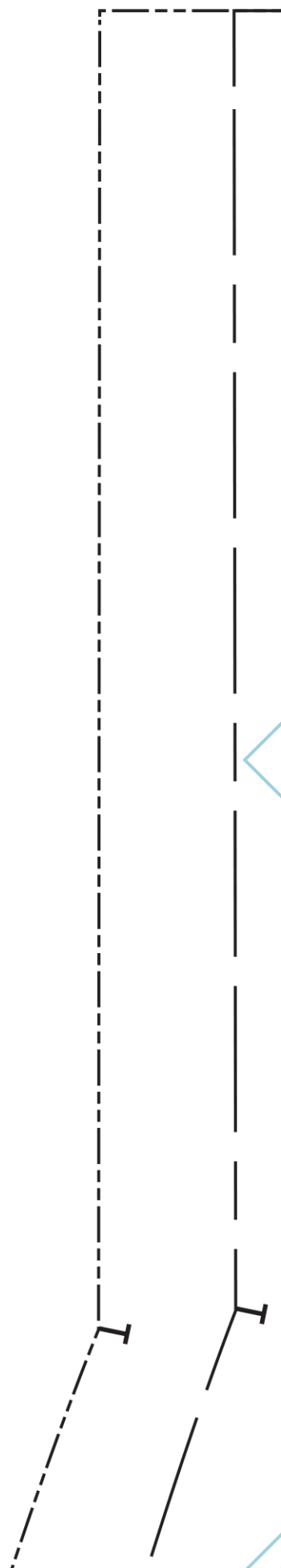
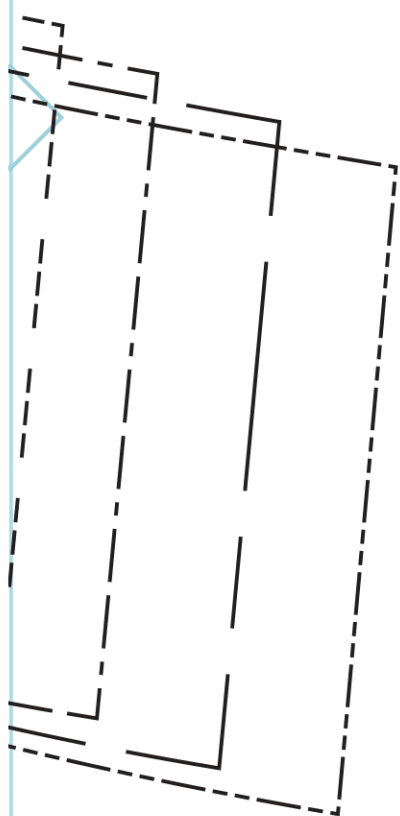
Valentines Slip Dress/Nighty Front Facing

Cut x 1 Fabric On Fold
1cm Seam Allowance Incl

A3



A4



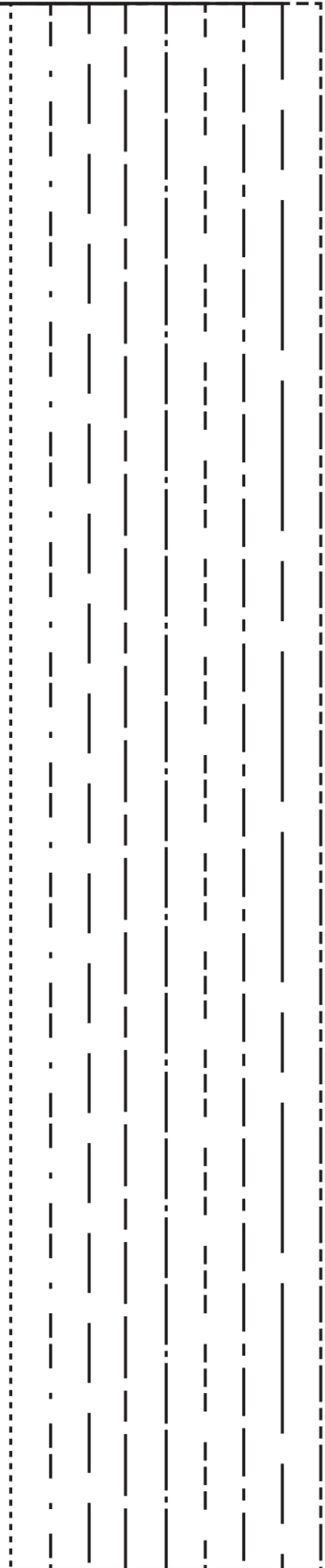
A5

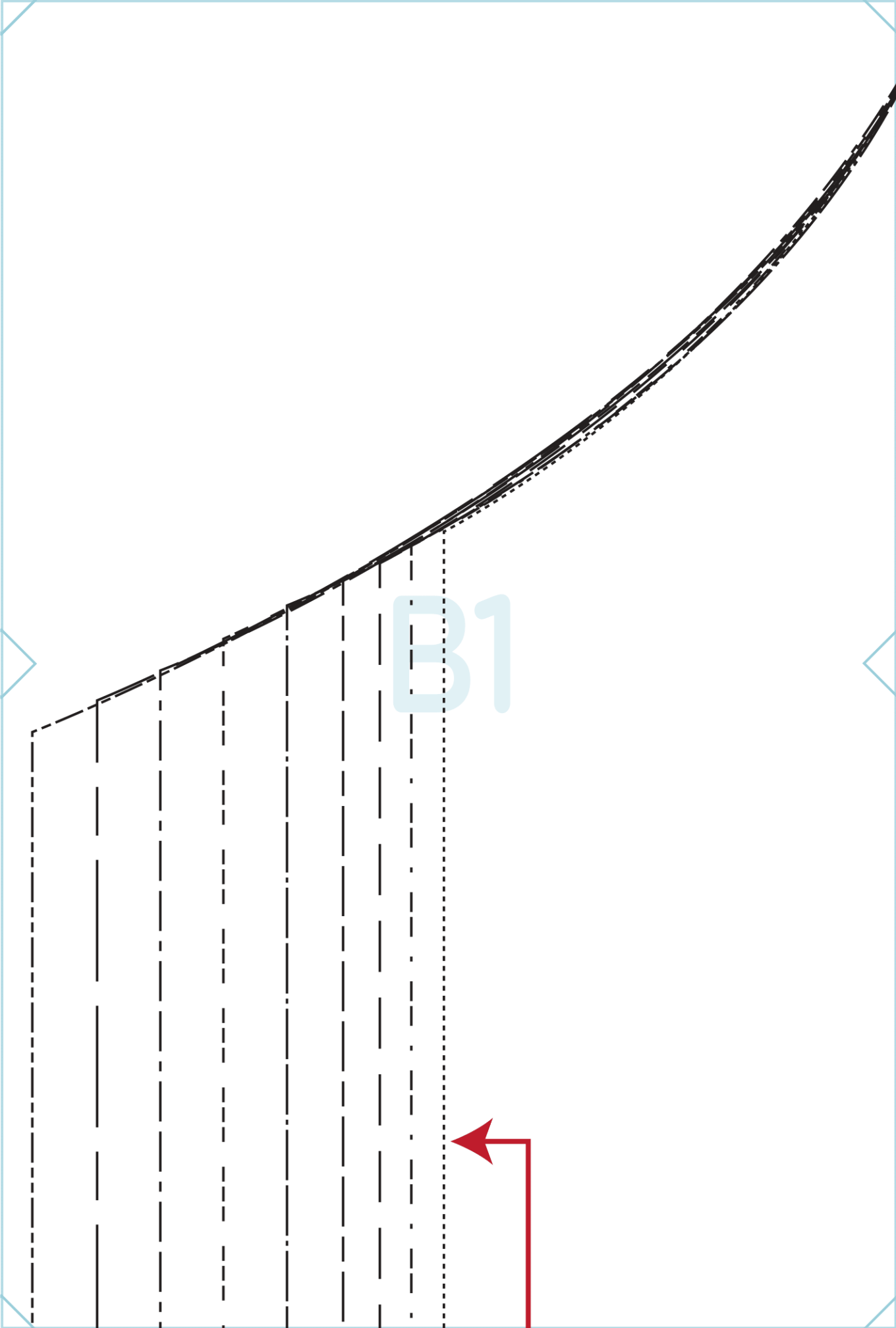


Valentines Slip Dress/Nighty Back Dress

Cut x 1 Fabric On Fold
1cm Seam Allowance Incl

A6







B2

abric8

Valentines
Slip Dress/Nighty
Front Dress

Cut x 1 Fabric On Fold
1cm Seam Allowance Incl

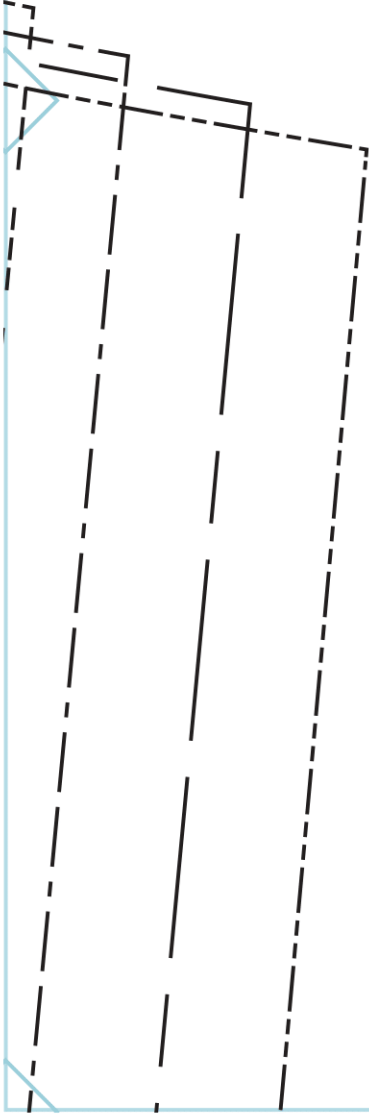
B3

abric8

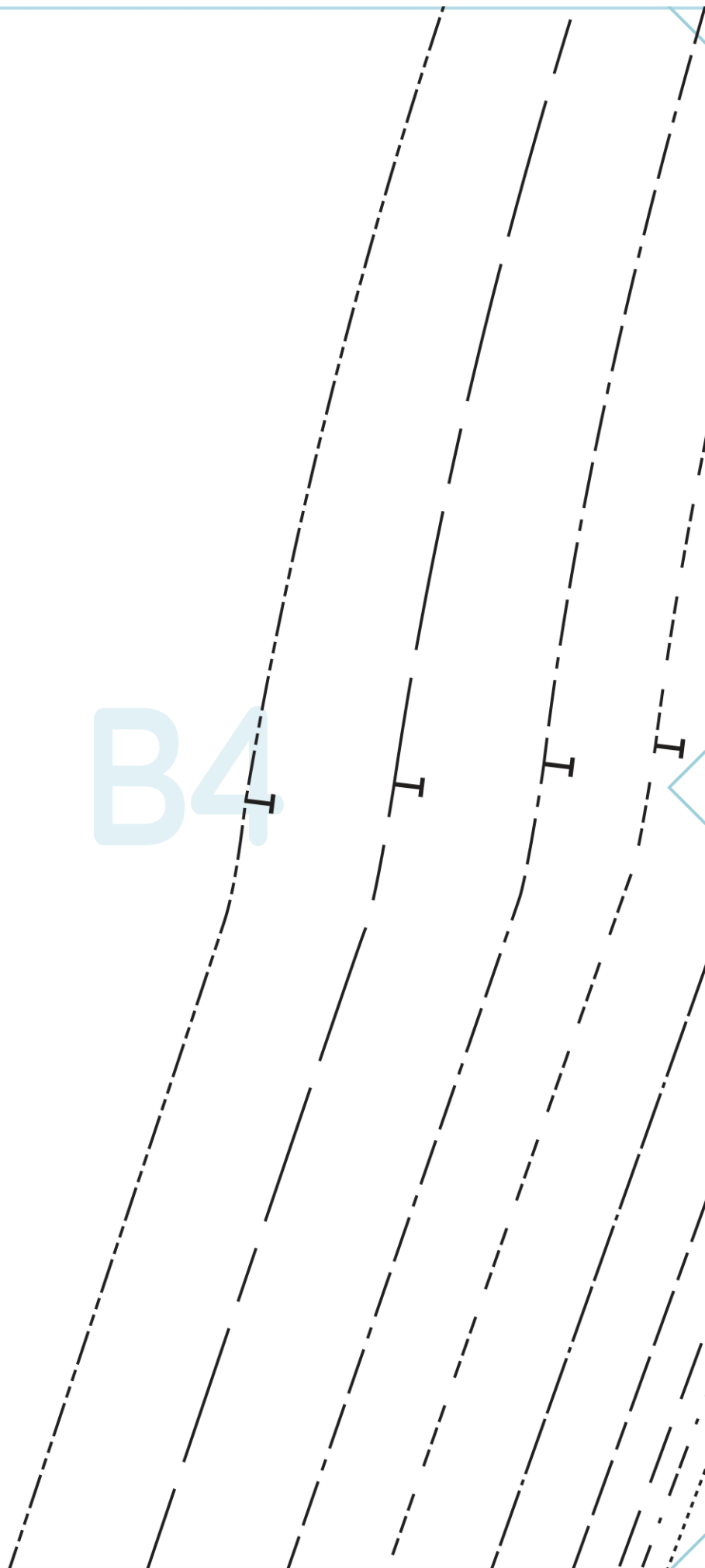
Valentines
Slip Dress/Nighty

Straps

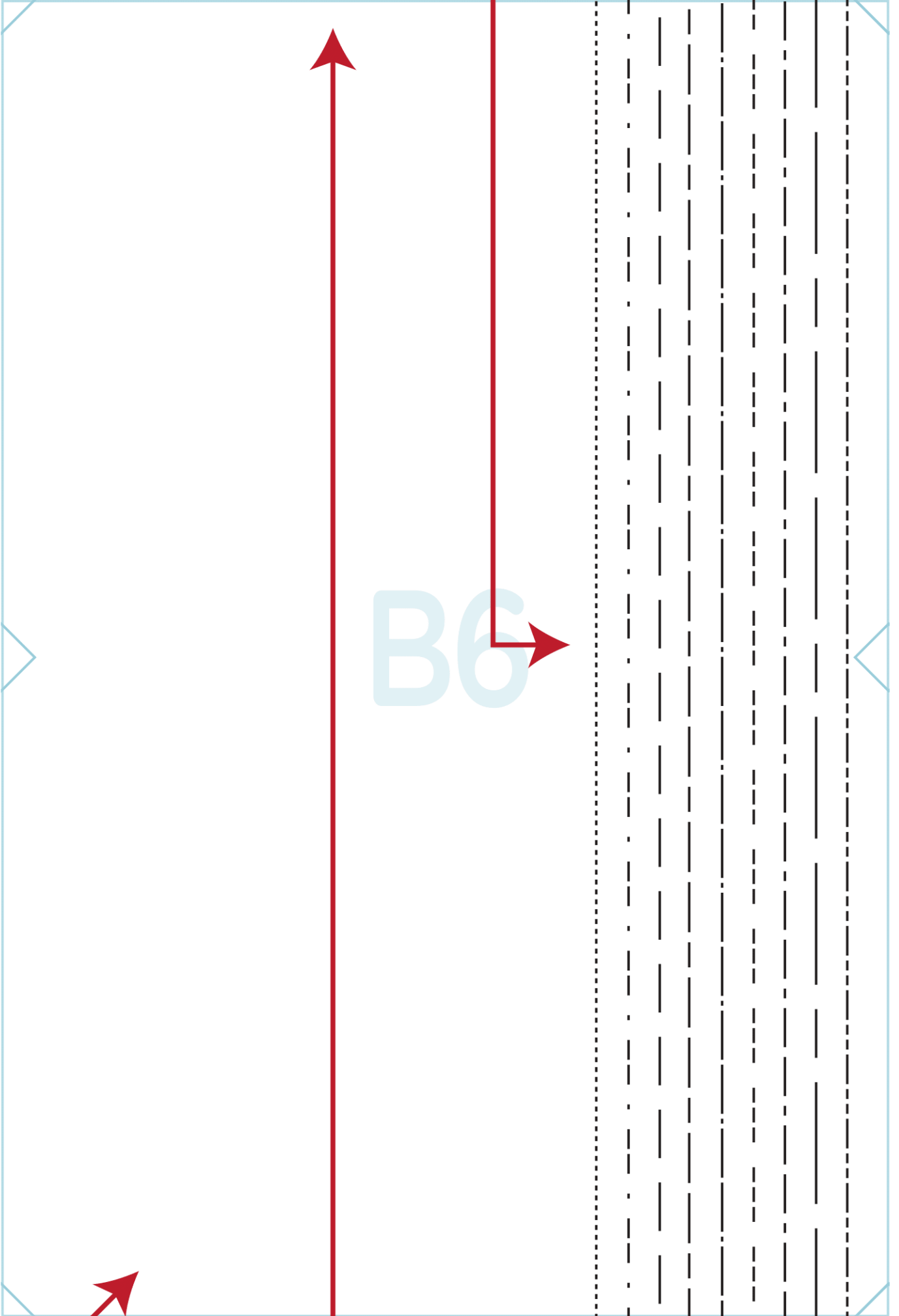
Cut x 2 Fabric On Fold
1cm Seam Allowance Incl

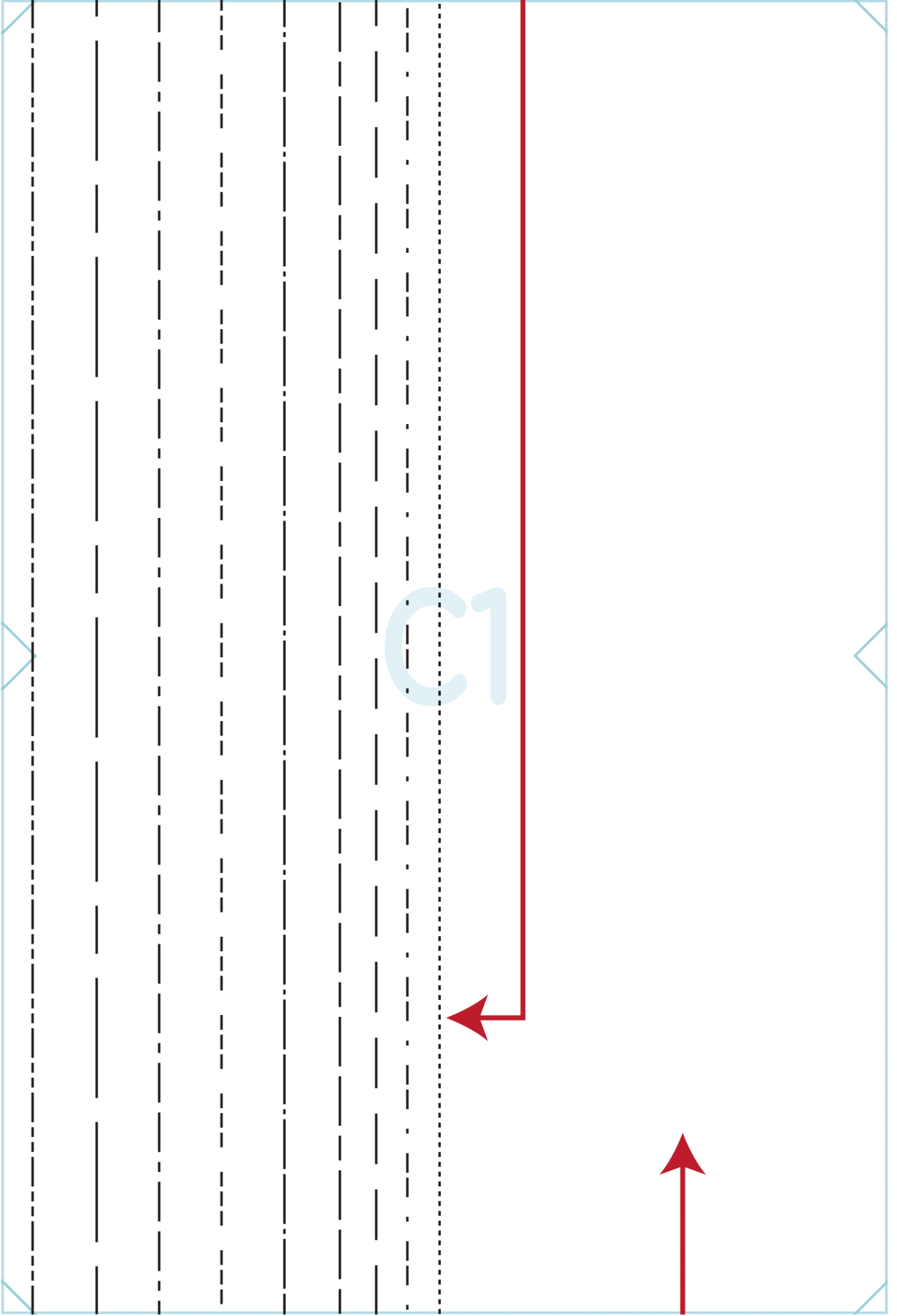


B4

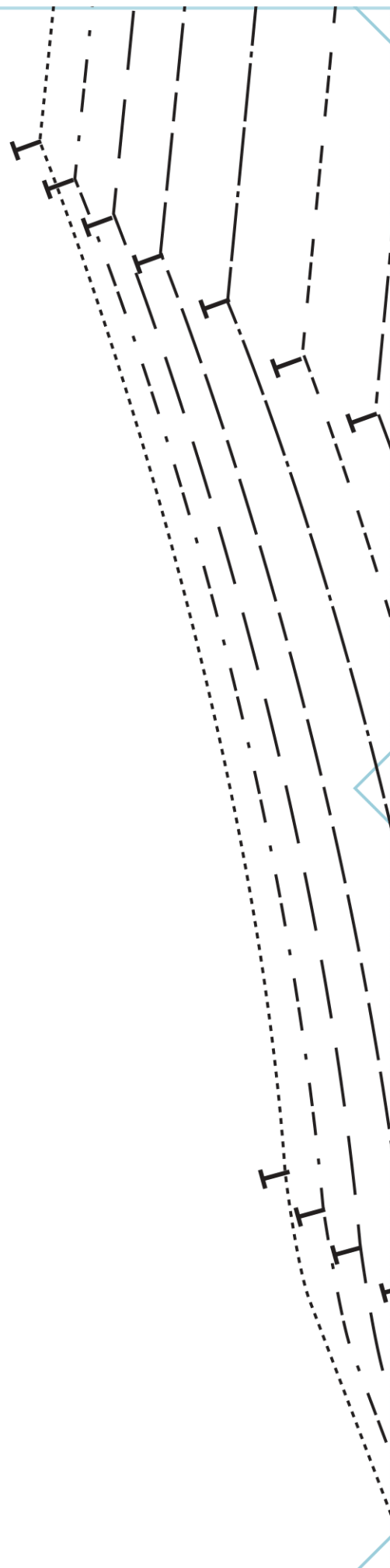


B5





C2

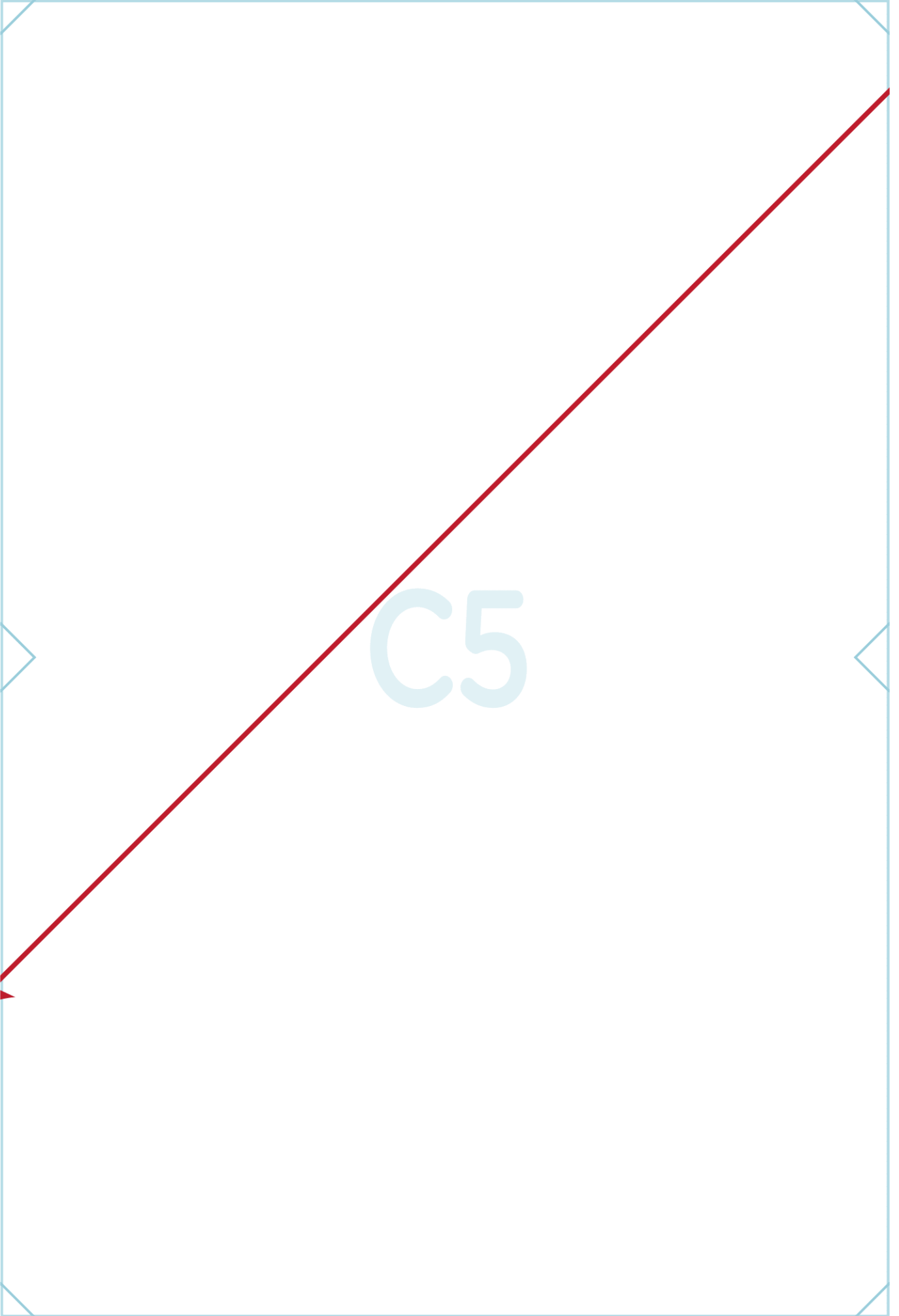


C3

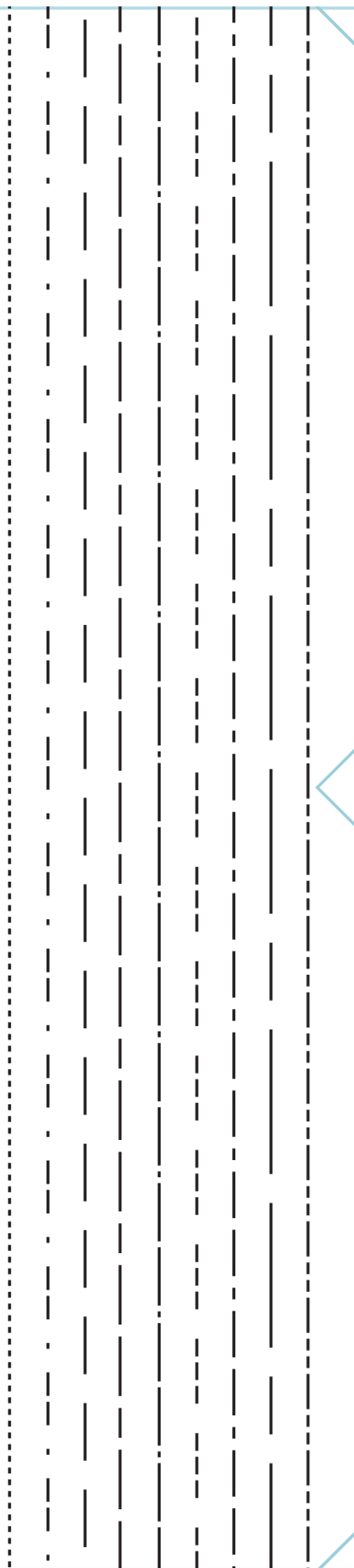


C4



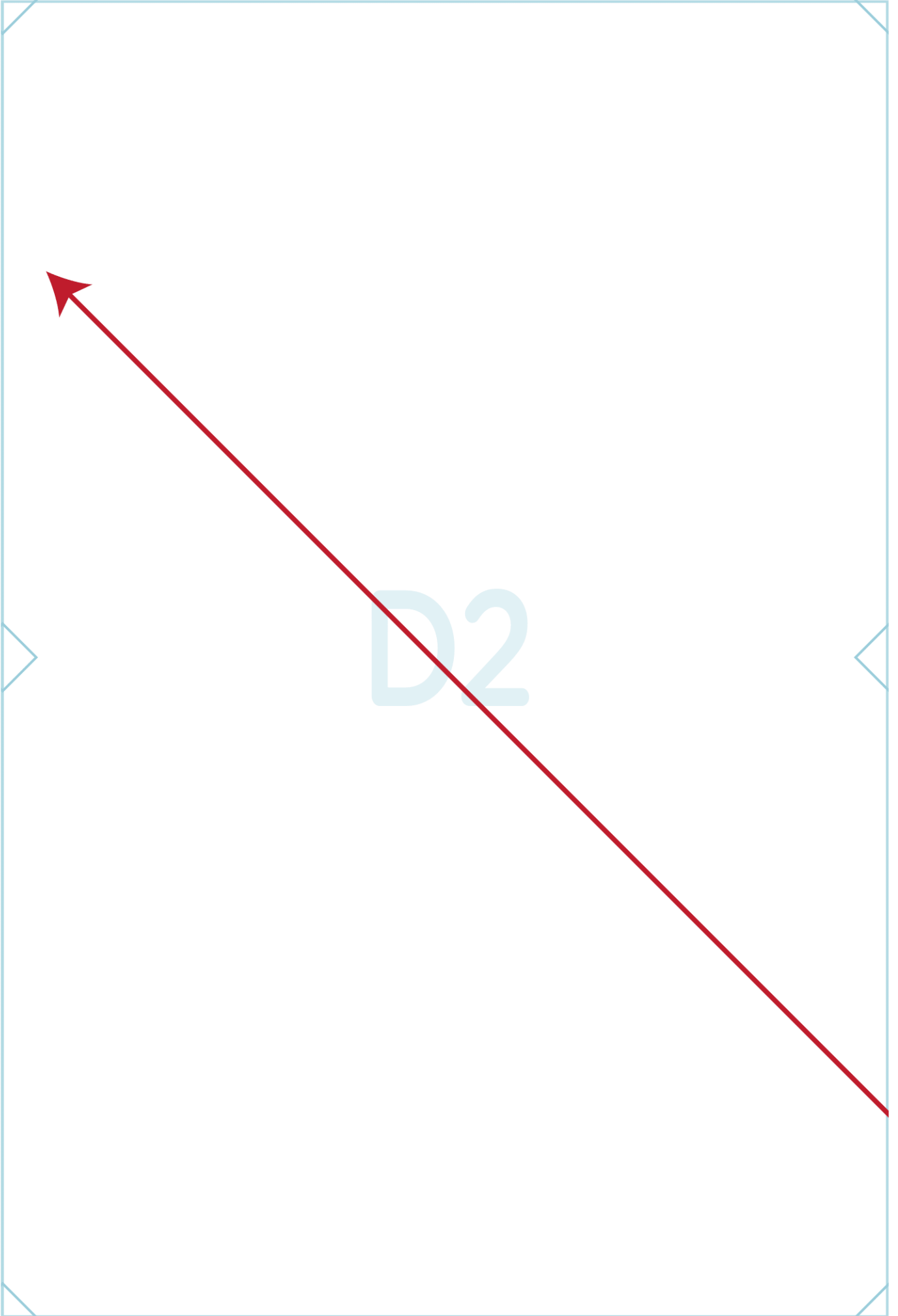


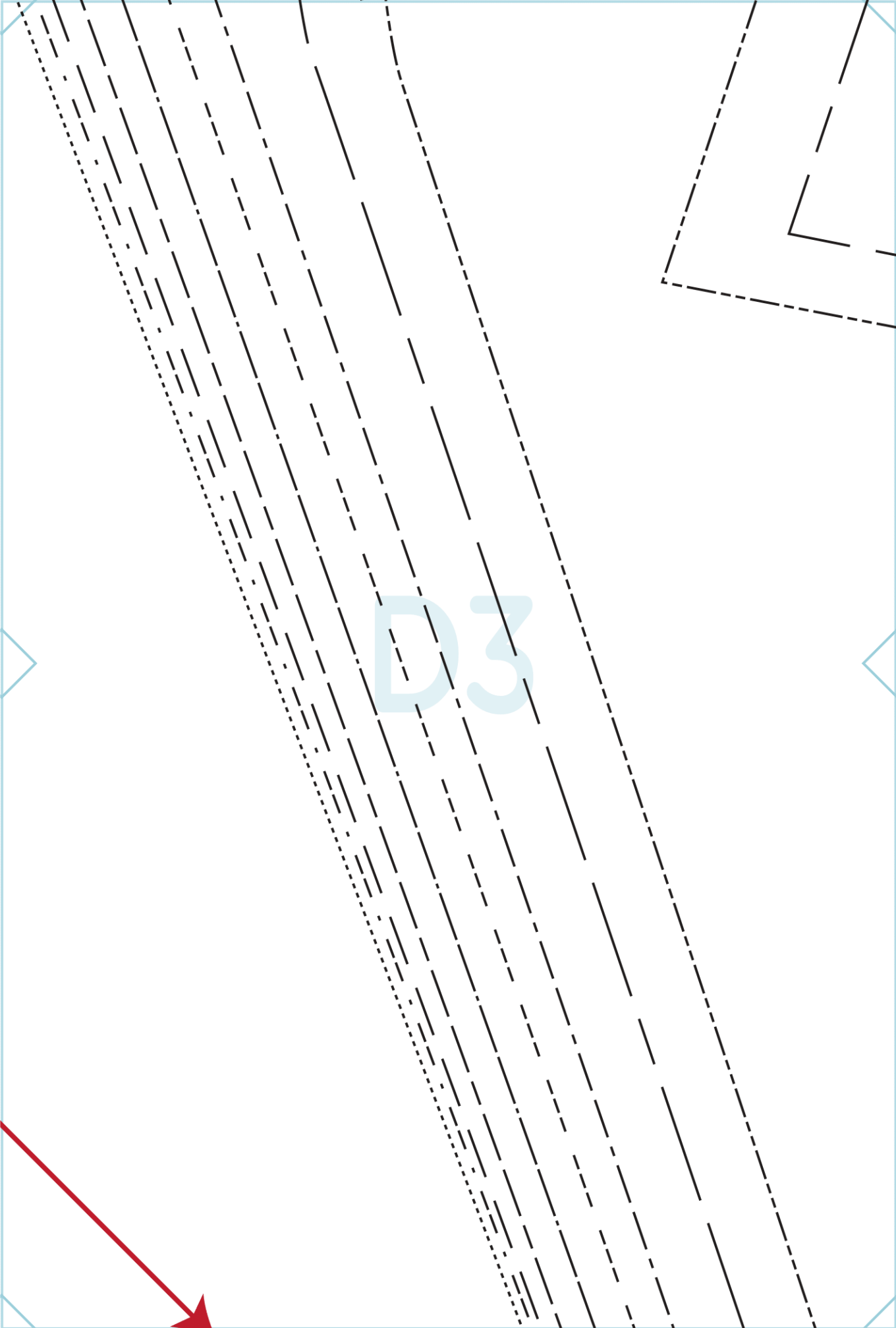
C6

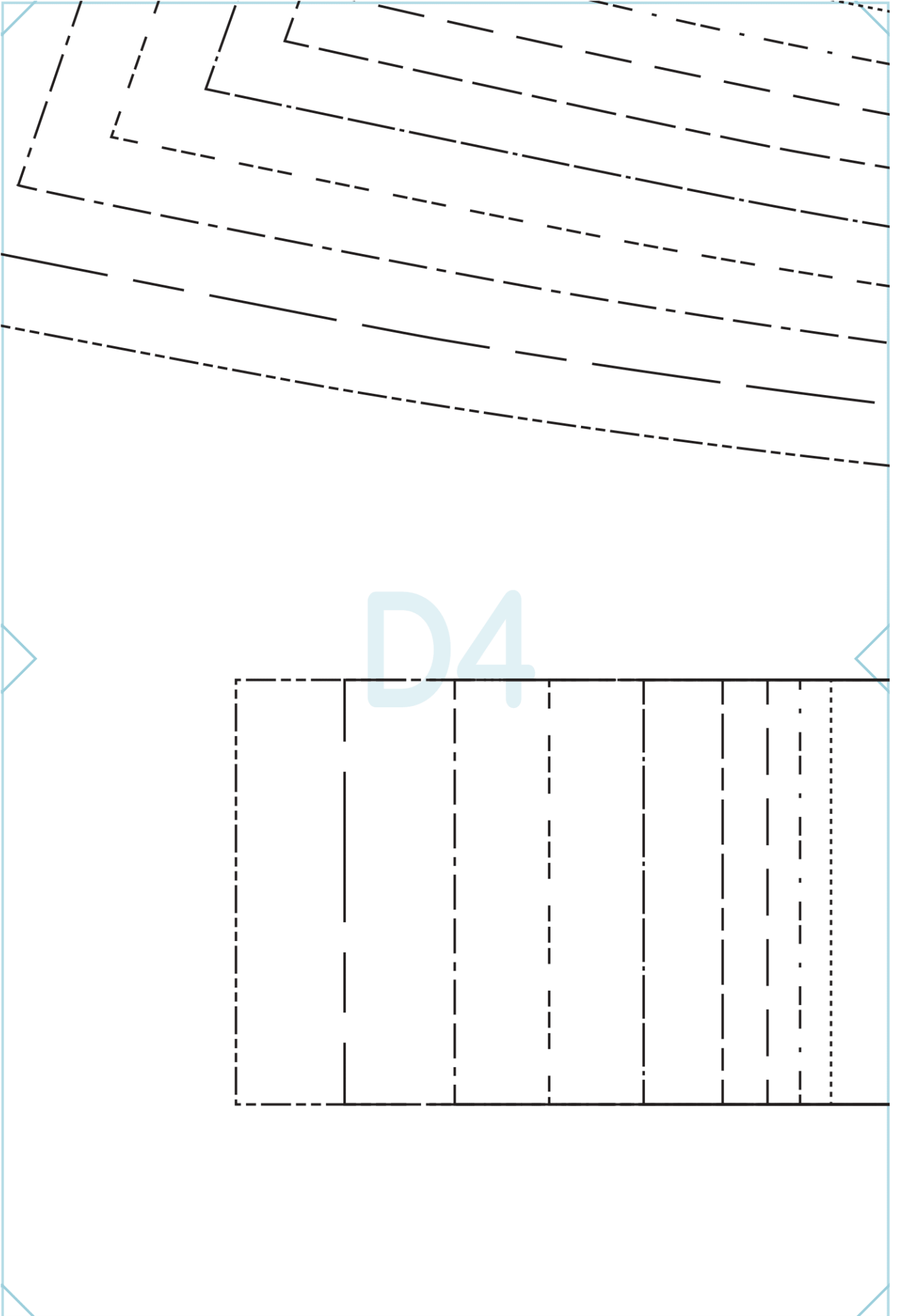


D1







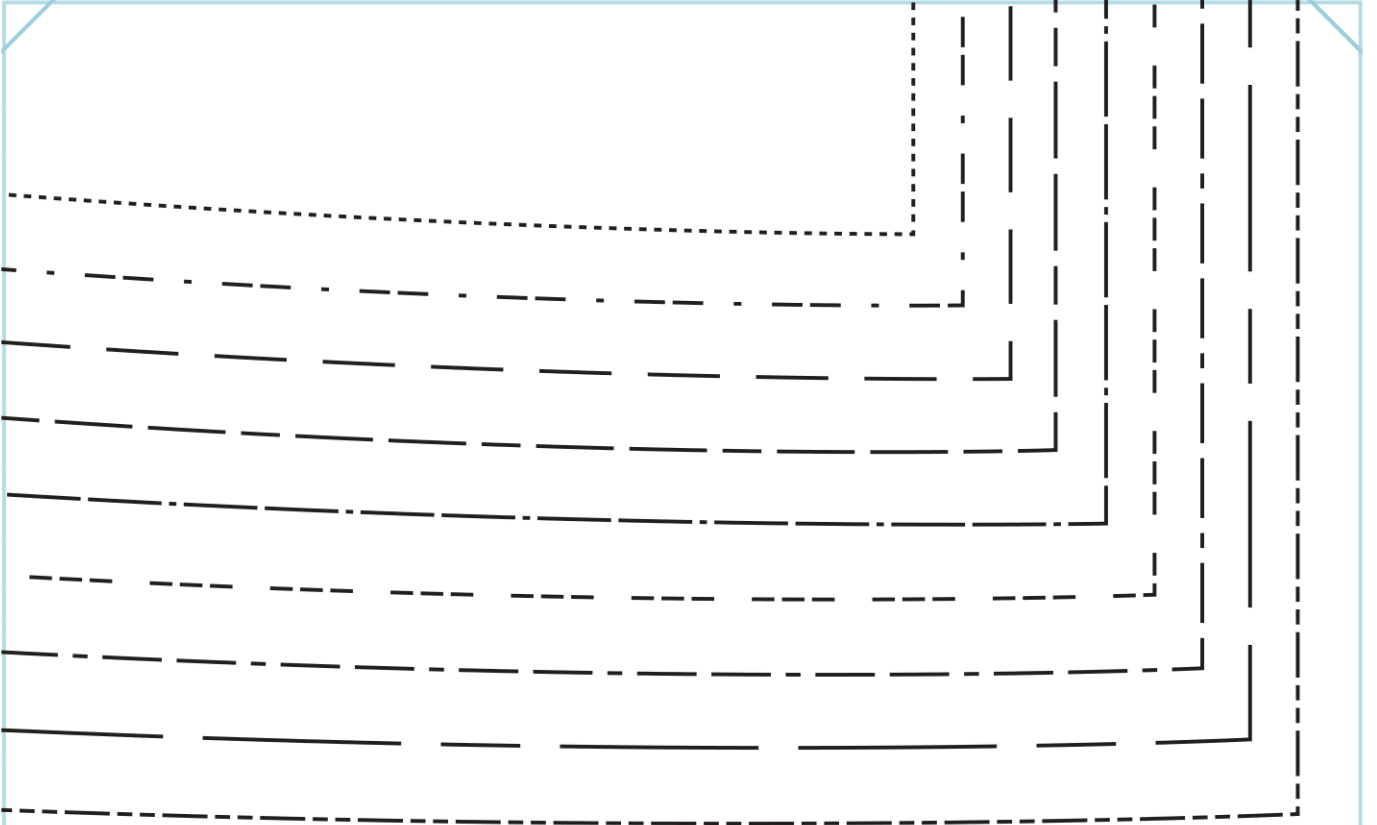


D5

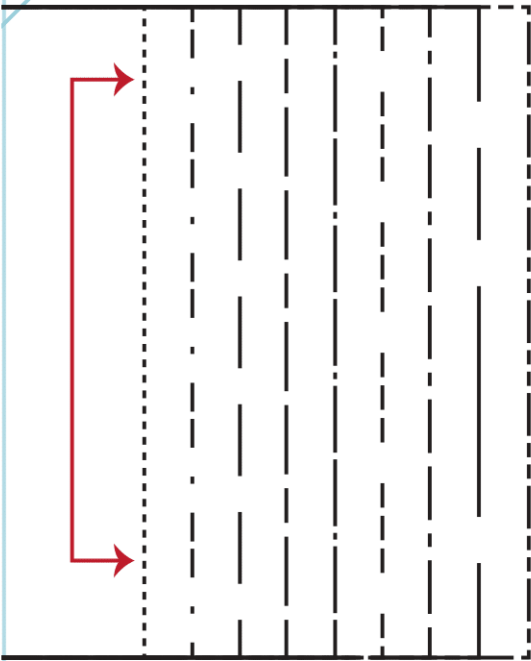
fabric8
Valentines
Slip Dress/Nighty
Back Facing

Cut x 1 Fabric On Fold
1cm Seam Allowance Incl





D6



E1

E2

E3

E4