

with me cross body bag

WATCH THE VIDEO TUTORIAL:



Youtube: <https://www.youtube.com/watch?v=DA615Mdd70M>

PRINTING INSTRUCTIONS:

- Print only the first page with 1x1 inch and/ or 2x2 cm blocks on the first page
- Set printer to 100% scale
- Avoid "Print Entire Image" or "Fill Entire Paper" options, as this will make your pattern print at the wrong size
- Measure printed 1x1 inch & 2x2 cm blocks with a ruler for accuracy
- If sizing is correct, print all pages at 100% scale
- Assemble and cut out the pattern

SUPPLIES & TOOLS:

The items listed are conveniently hyperlinked to their respective pages on the Fabric8 website, if available. Simply click on the desired item, and it will effortlessly open up in your web browser for easy access and purchase.

Fabric:

- [½ meter outer fabric](#)
- [½ meter lining fabric](#)
- [½ meter fusing](#)

Tools:

- [Rotary cutter](#)
- [Self-healing cutting mat](#)
- [Quilting ruler](#)
- [Quilting ruler handle](#)
- [Tape measure](#)
- [Hand sewing needle](#)

- [Sewing machine bobbins](#)
- [Fabric scissors](#)
- [Fabric marker/ tailors chalk](#)
- [Pins](#)
- [Fabric clips](#)
- [Prym mini steam iron](#)
- [Table sized ironing board](#)
- [Bias binding maker](#)
- [Bias binding presser foot](#)
- Paper scissors
- Paper glue
- [Kam pliers kit](#)

1. CHOOSE YOUR FABRIC

Decide on the fabric for the inside and outside of your bag. Consider whether they should be the same color or perhaps a contrasting color.

- Cut 1 x outer fabric bag body.
- Cut 1 x lining fabric bag body.
- Cut 1 x fusing.
- Cut 2 x strapping attachment tabs.
- Cut 1 x cross body strap to the desired length.
- 2 x D-rings, 25mm.
- 1 x slider, 25mm.
- 1 or 2 x lobster claw, 25mm.
- 1 x popper or magnetic bag clasp.

2. FUSING, POPPER/CLASP & STRAP ATTACHMENT ASSEMBLY

- Iron the fusing to the wrong side of the outer fabric piece. (I always cut my fusing smaller by about 1cm to avoid bulk.)
- Attach the popper/clasp to the outer fabric at the marked spots. When adding your magnetic clasp, add an extra layer of fusing right behind the clasp (2cm x 2cm) to give extra strength.

- Fold the 2 strapping attachments in half, inserting the D-ring, and burn the raw edges. Then, attach at the marked spots.

3. SEWING THE BAG

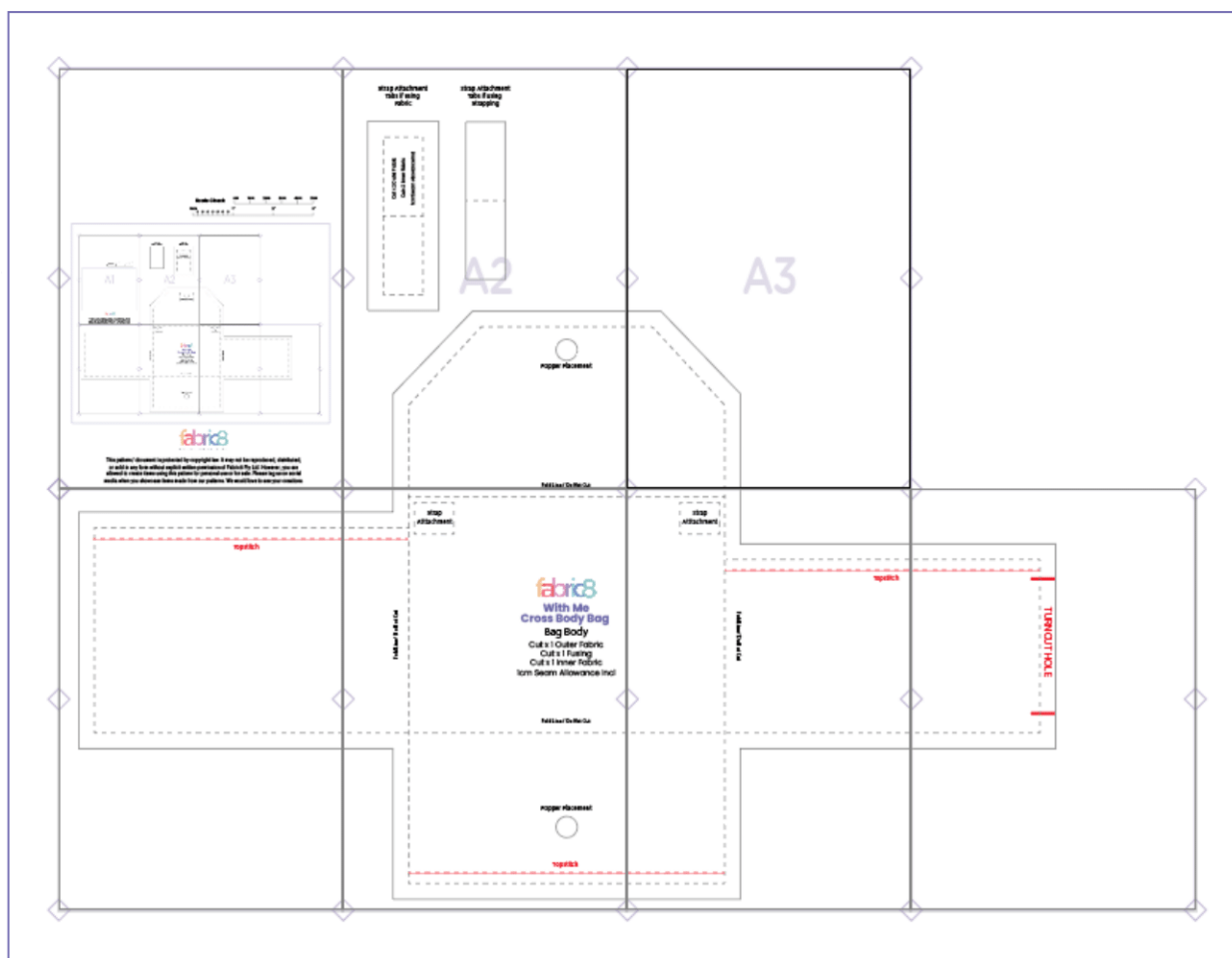
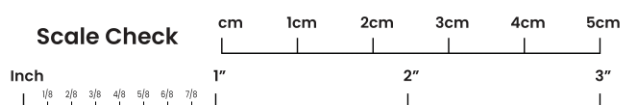
- Lay down your outer fabric bag piece, with the right side up. Now lay your lining fabric piece exactly on top, with the right side facing down (they should be right sides together).
- Sew at 1cm all around, leaving a turnout hole. Trim excess fabric, nip into corners, and turn right side out. Neaten up the edges by ironing them and pin the turnout hole closed.
- Topstitch at all the red topstitch lines and close the turnout hole with a topstitch.

4. FOLD & FINISH BAG

- Iron again and use a clapper to get nice and flat edges.
- Fold the left rectangle in → at the fold line.
- Fold the right rectangle in ← at the fold line.
- Fold the bottom rectangle up ↑ at the fold line.
- Pin or clip the sides together. Topstitch all around.
- Fold the top rectangle (bag flap) down ↓ at the fold line and iron flat. To better maintain the fold at the top, you can sew a topstitch very close to the folded edge. Close the popper/clasp.
- Attach the shoulder strap with lobster claws to the D-rings, and it's done.

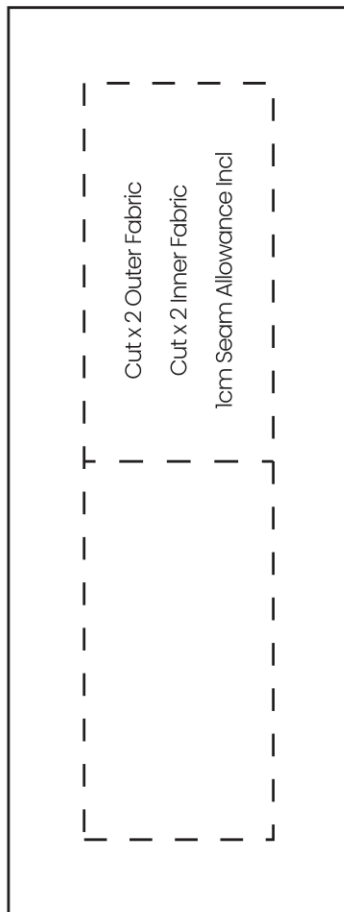
PRINTING INSTRUCTIONS:

1. Start by only printing this page with the measurement scale (as below).
2. Ensure that your printer settings are correct:
 - Set your printer to "Do not scale" or to "100% scale". Set to A4.
 - Make sure that you have not selected "Print entire image" or "Fill entire paper". This will make your sizing incorrect.
 - You have to print your pattern at 100% scale.
3. Using a ruler or measuring tape, measure the inches or centimeters on the measurement scale below once this page has been printed out. Ensure that the measurement scale lines up with your ruler or measuring tape. If it does, it means you have selected the correct printer settings.
4. If your measurement scale lines up correctly, print out the rest of the pattern pages at 100% scale.
5. Cut out and line up the lines of the pattern pages. Ensure that the triangles in the corner all line up. Stick your pattern together as illustrated below.

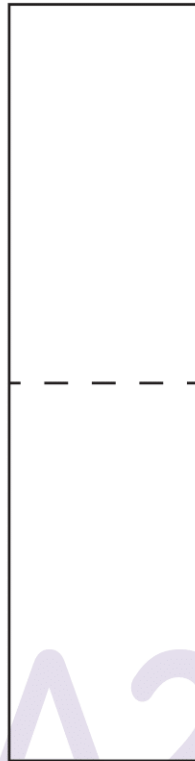


This pattern/ document is protected by **copyright** law. It **may not be reproduced, distributed, or sold** in any form without the explicit written permission of Fabric8 Pty Ltd. However, you are allowed to create items using this pattern for personal use or for sale. Please tag us on social media when you showcase items made from this pattern. We would love to see your creations.

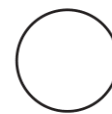
Strap Attachment
Tabs if using
Fabric



Strap Attachment
Tabs if using
Strapping



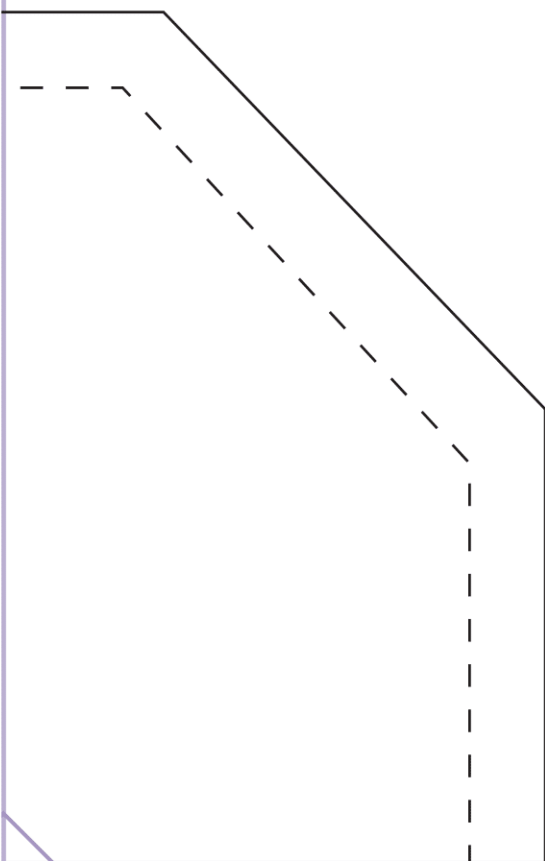
A2



Popper Placement

Fold Line / Do Not Cut

A3



B1

Topstitch

Strap
Attachment

Fold Line / Do Not Cut

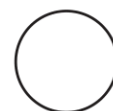
fabric8
With Me
Cross Body Bag
Bag Body

Cut x 1 Outer Fabric
Cut x 1 Fusing
Cut x 1 Inner Fabric
1cm Seam Allowance Incl

B2

Fold Line / Do Not Cut

Popper Placement



Topstitch

Strap
Attachment

Topstitch

Fold Line / Do Not Cut

B3

