

# *mini wallet*

## WATCH THE VIDEO TUTORIAL:



**Youtube:** <https://www.youtube.com/watch?v=uVHiX894160>

## PRINTING INSTRUCTIONS:

- Print only the first page with 1x1 inch and/ or 2x2 cm blocks on the first page
- Set printer to 100% scale
- Avoid "Print Entire Image" or "Fill Entire Paper" options, as this will make your pattern print at the wrong size
- Measure printed 1x1 inch & 2x2 cm blocks with a ruler for accuracy
- If sizing is correct, print all pages at 100% scale
- Assemble and cut out the pattern

# SUPPLIES & TOOLS:

The items listed are conveniently hyperlinked to their respective pages on the Fabric8 website, if available. Simply click on the desired item, and it will effortlessly open up in your web browser for easy access and purchase.

## Supplies:

- Fusing
- [Keyring](#) or [lobster claw clasp](#)

## Fabric:

- Cut off fabric (2 different colours if you want a contrast)

## Tools:

- [Sewing machine bobbins](#)
- [Fabric scissors](#)
- [Fabric marker/ tailors chalk](#)
- [Pins](#)
- [Fabric clips](#)
- [Prym mini steam iron](#)
- [Table sized ironing board](#)
- [Bias binding maker](#)
- [Bias binding presser foot](#)
- Paper scissors
- Paper glue

## 1. CUT OUT THE FABRIC

- Cut two pieces of the wallet pattern from your chosen fabric. For a contrasting look, consider using two different colors.
- Also, cut two pieces of fusing.

## 2. APPLY FUSING

- Apply the fusing to the back of the two wallet fabric pieces.

## 3. SEW THE PIECES

- **Prepare keyring tag:** Fold the keyring tag in half lengthwise. Then, fold the left and right long sides to the middle fold line, creating a double-folded piece. Insert the keyring and fold the tag double.
- **Attach keyring tag:** Baste or attach the tag for the keyring to the pattern marking, aligning the raw edges with the raw edges of one wallet piece, on the inside piece of wallet fabric.
- **Prepare small pocket:** Fold the small pocket piece on the fold line, right sides facing each other. Sew the other long edge, turn it out, iron, and topstitch one of the long edges. This stitched edge will be the top of your small pocket.

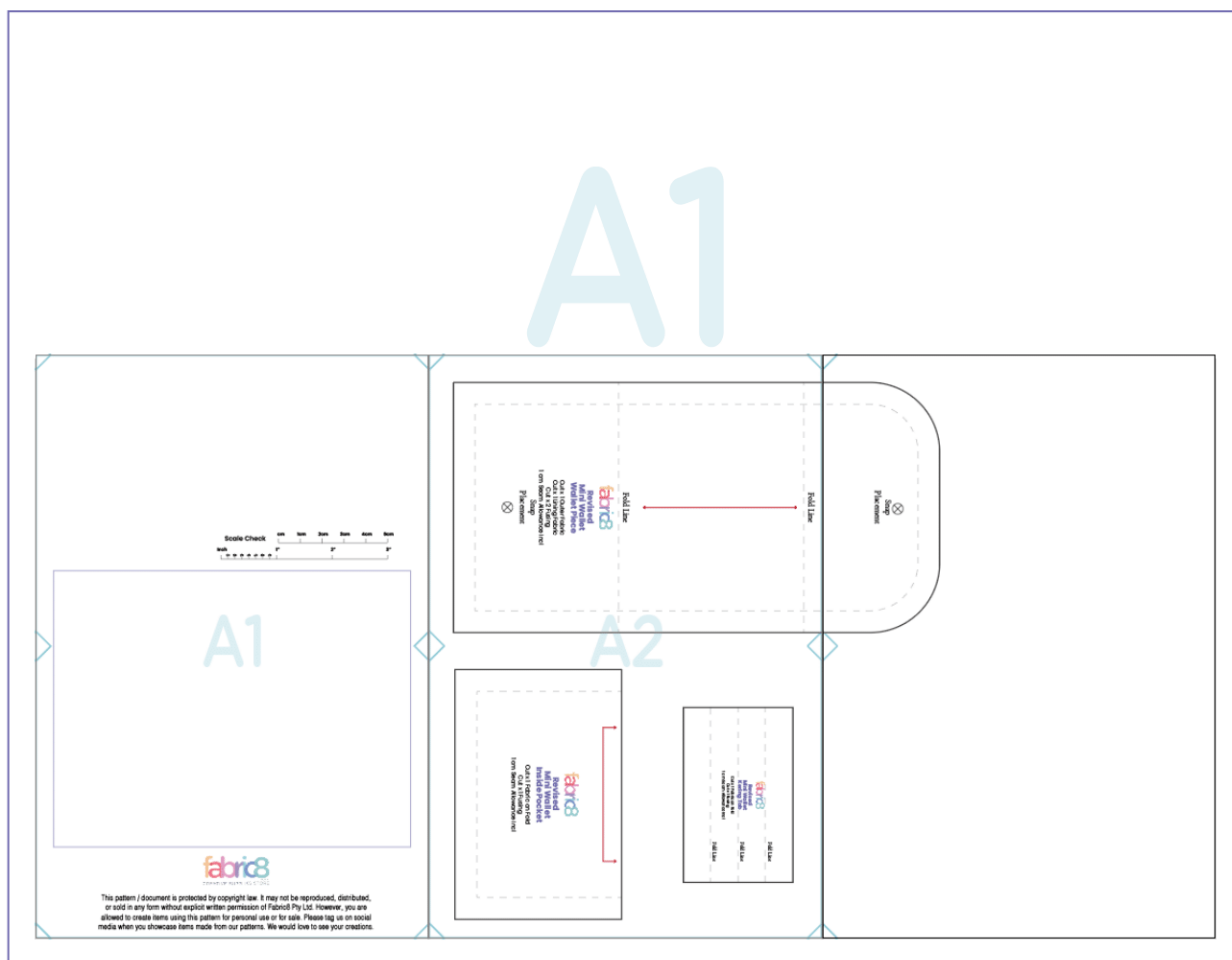
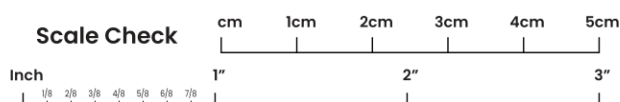
- **Attach small pocket:** Pin and baste the small pocket to one side of the wallet, aligning the bottom edge with the fold line and matching the two raw side edges with the wallet's side raw edges.
- **Assemble wallet:** Place the other piece of the wallet on top of the piece with the pocket and tag, right sides together, sandwiching them in between. Pin the pieces together.

## 4. FINALISING YOUR MINI WALLET

- **Sew wallet edges:** Sew around the edges of the wallet, leaving an opening at the bottom for turning the wallet right side out. Cut small triangles out of the corners and slits into the curves to help the wallet lay flat when turned.
- **Turn and iron:** Turn the wallet right side out through the opening. Use a point turner or scissors tip to push out the corners and curves. Iron the wallet flat, folding in the fabric at the opening to align with the sewn seam.
- **Topstitch and finish:** Topstitch the bottom, closing the opening. Fold the wallet pocket part up and pin in place. Topstitch around the entire wallet, sealing the opening in the process.

# PRINTING INSTRUCTIONS:

1. Start by only printing this page with the measurement scale (as below).
2. Ensure that your printer settings are correct:
  - Set your printer to "Do not scale" or to "100% scale". Set to A4.
  - Make sure that you have not selected "Print entire image" or "Fill entire paper". This will make your sizing incorrect.
  - You have to print your pattern at 100% scale.
3. Using a ruler or measuring tape, measure the inches or centimeters on the measurement scale below once this page has been printed out. Ensure that the measurement scale lines up with your ruler or measuring tape. If it does, it means you have selected the correct printer settings.
4. If your measurement scale lines up correctly, print out the rest of the pattern pages at 100% scale.
5. Cut out and line up the lines of the pattern pages. Ensure that the triangles in the corner all line up. Stick your pattern together as illustrated below.



This pattern/ document is protected by **copyright** law. It **may not be reproduced, distributed, or sold** in any form without the explicit written permission of Fabric8 Pty Ltd. However, you are allowed to create items using this pattern for personal use or for sale. Please tag us on social media when you showcase items made from this pattern. We would love to see your creations.

Fold Line



Fold Line

**fabri8**

**Revised  
Mini Wallet  
Wallet Piece**

Cut x 1 Outer Fabric  
Cut x 1 Lining Fabric  
Cut x 2 Fusing  
1 cm Seam Allowance Incl

Snap

Placement



A2

Fold Line

**fabri8**

**Revised  
Mini Wallet  
Keting Tab**

Cut x 1 Fabric on Fold  
Cut x 1 Fusing  
1 cm Seam Allowance Incl

Fold Line

Fold Line



**fabri8**

**Revised  
Mini Wallet  
Inside Pocket**

Cut x 1 Fabric on Fold  
Cut x 1 Fusing  
1 cm Seam Allowance Incl

