

lip ice/ lip balm holder



WATCH THE VIDEO TUTORIAL:



Youtube: <https://www.youtube.com/watch?v=uVHiX894160>

PRINTING INSTRUCTIONS:

- Print only the first page with 1x1 inch and/ or 2x2 cm blocks on the first page
- Set printer to 100% scale
- Avoid "Print Entire Image" or "Fill Entire Paper" options, as this will make your pattern print at the wrong size
- Measure printed 1x1 inch & 2x2 cm blocks with a ruler for accuracy
- If sizing is correct, print all pages at 100% scale
- Assemble and cut out the pattern

SUPPLIES & TOOLS:

The items listed are conveniently hyperlinked to their respective pages on the Fabric8 website, if available. Simply click on the desired item, and it will effortlessly open up in your web browser for easy access and purchase.

Supplies:

- [Seralon thread](#): 1 spool
- [Handbag magnet large](#): 1 pair
 - **OR** Velcro
 - **OR** [Kam plastic snap fastener](#)
- [Silver ring](#)

Fabric:

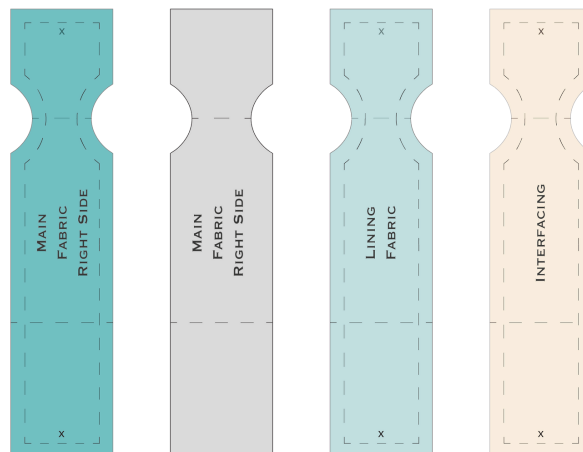
- 50 x 15cm piece x2

Tools:

- [Sewing machine bobbins](#)
- [Fabric scissors](#)
- [Fabric marker/ tailors chalk](#)
- [Pins](#)
- [Fabric clips](#)
- [Prym mini steam iron](#)
- [Table sized ironing board](#)
- [Bias binding maker](#)
- [Bias binding presser foot](#)
- Paper scissors
- Paper glue
- [Kam pliers kit](#)

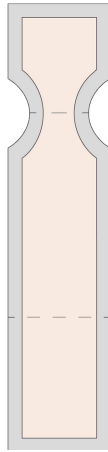
1. CUT OUT THE FABRIC

- Begin by cutting out the fabric pieces according to the pattern provided.



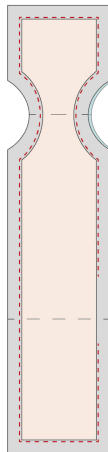
2. PREPARE THE FUSING

- Cut the fusing 1 cm smaller all the way around the fabric.
- Fuse it to the wrong side of the main fabric, following the manufacturer's instructions.



3. SEW MAIN FABRIC & LINING TOGETHER

- Pin the main fabric and lining together, right sides facing each other.
- Sew around the edges as indicated in the picture, leaving a gap for turning the piece right side out.



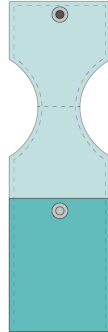
4. TURN RIGHT SIDE OUT & ATTACH SNAPS

- Turn the fabric right side out through the gap you left earlier.
- Press the piece flat with an iron.
- Attach snaps to the appropriate positions on the fabric, following the package instructions.



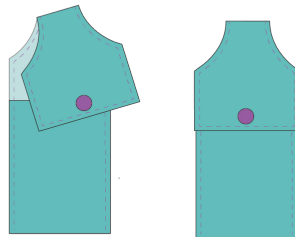
5. FORM THE LIP BALM POCKET

- Fold the bottom part of the fabric up, aligning it with the snap.
- Pin it in place, and then topstitch around the edges to secure the pocket.



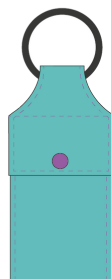
6. CHECK THE SNAPS & FOLD TOP PART OVER

- Fold the top part of the fabric over the pocket, making sure the snaps align correctly.
- Test the snaps to ensure they close securely.



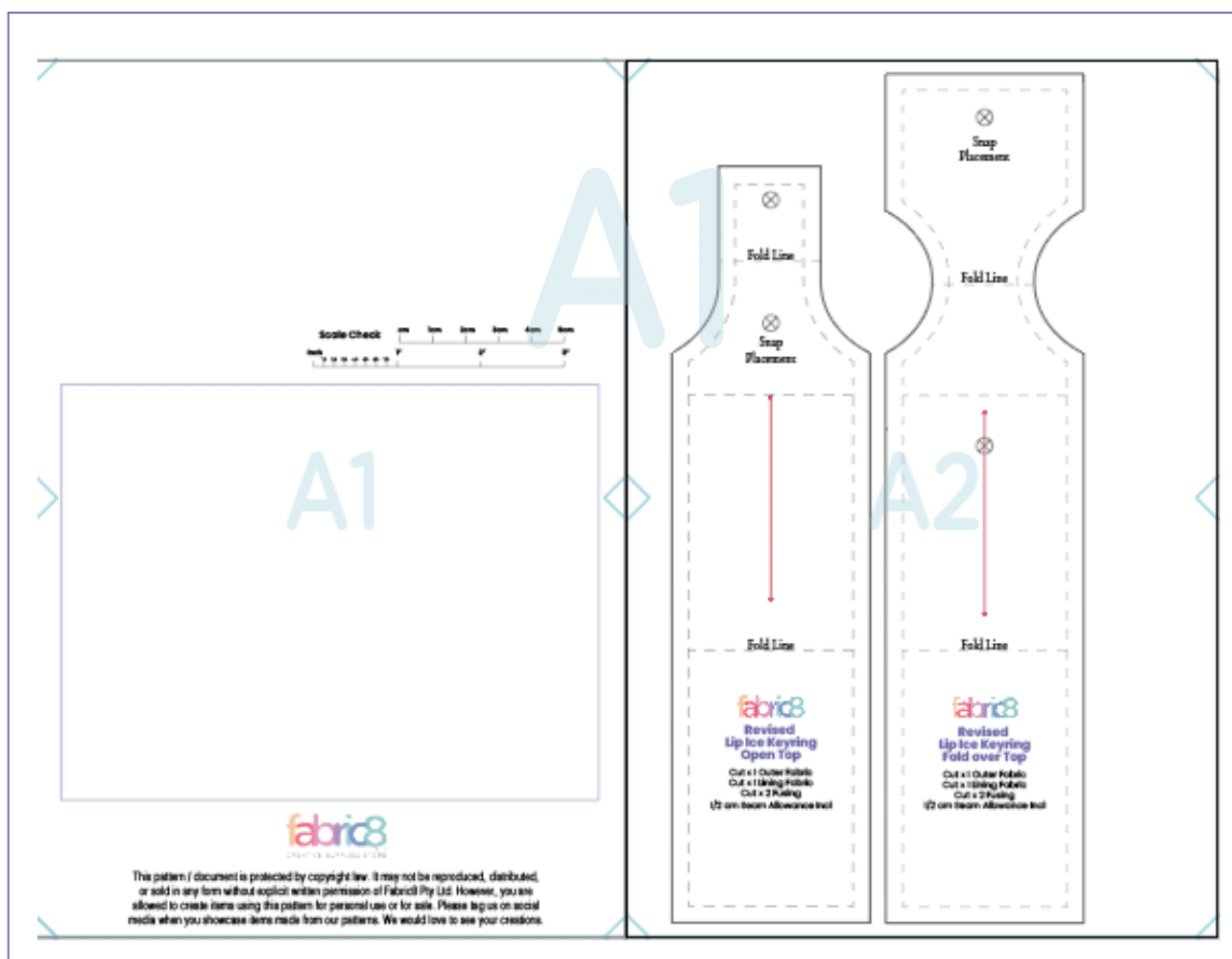
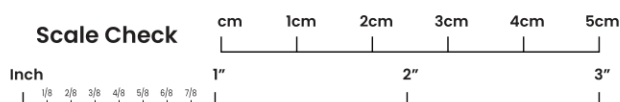
7. ATTACH THE KEYRING

- Insert the keyring through the loop at the top of the fabric.
- Topstitch in place to secure the keyring.



PRINTING INSTRUCTIONS:

1. Start by only printing this page with the measurement scale (as below).
2. Ensure that your printer settings are correct:
 - Set your printer to "Do not scale" or to "100% scale". Set to A4.
 - Make sure that you have not selected "Print entire image" or "Fill entire paper". This will make your sizing incorrect.
 - You have to print your pattern at 100% scale.
3. Using a ruler or measuring tape, measure the inches or centimeters on the measurement scale below once this page has been printed out. Ensure that the measurement scale lines up with your ruler or measuring tape. If it does, it means you have selected the correct printer settings.
4. If your measurement scale lines up correctly, print out the rest of the pattern pages at 100% scale.
5. Cut out and line up the lines of the pattern pages. Ensure that the triangles in the corner all line up. Stick your pattern together as illustrated below.



This pattern/ document is protected by **copyright** law. It **may not be reproduced, distributed, or sold** in any form without the explicit written permission of Fabric8 Pty Ltd. However, you are allowed to create items using this pattern for personal use or for sale. Please tag us on social media when you showcase items made from this pattern. We would love to see your creations.

