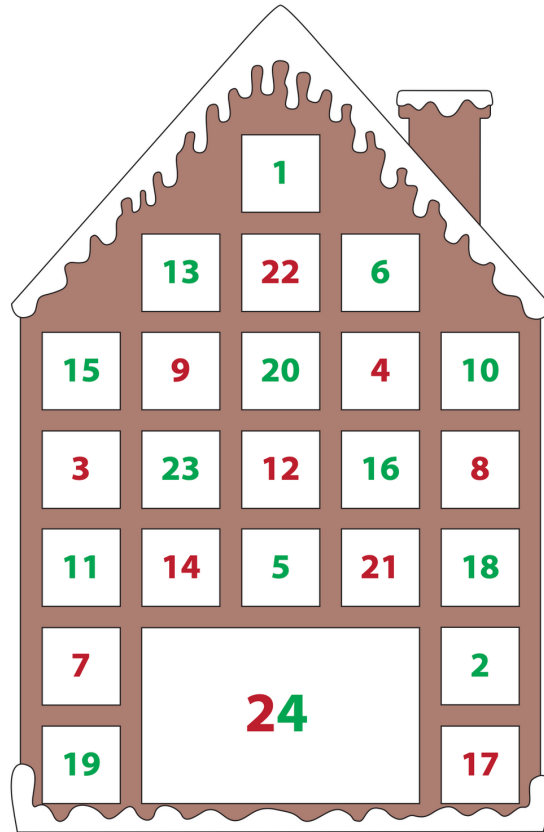


christmas advent calendar



WATCH THE VIDEO TUTORIAL:

 **Youtube:** <https://www.youtube.com/watch?v=krVxmT-ytz8>

PRINTING INSTRUCTIONS:

- Print only the first page with 1x1 inch and/ or 2x2 cm blocks on the first page
- Set printer to 100% scale
- Avoid "Print Entire Image" or "Fill Entire Paper" options, as this will make your pattern print at the wrong size
- Measure printed 1x1 inch & 2x2 cm blocks with a ruler for accuracy
- If sizing is correct, print all pages at 100% scale
- Assemble and cut out the pattern

SUPPLIES & TOOLS:

The items listed are conveniently hyperlinked to their respective pages on the Fabric8 website, if available. Simply click on the desired item, and it will effortlessly open up in your web browser for easy access and purchase.

Fabric:

- 1 m main fabric or felt
- ¼ m Christmas fabric variety
- ¼ white felt

Supplies:

- Bias binding if binding edge
- Dowl sticks to use in support
- 1m fusing

Tools:

- [Sewing machine bobbins](#)
- [Fabric scissors](#)
- [Fabric marker/ tailors chalk](#)
- [Pins](#)
- [Fabric clips](#)
- [Prym mini steam iron](#)
- [Table sized ironing board](#)
- [Rotary cutter](#)
- [Self-healing cutting mat](#)
- [Quilting ruler](#)
- Paper scissors
- Paper glue

1. PREPARING THE MATERIALS

Main Calendar Components

- Cut 2 pieces of Main Calendar Fabric and corresponding Fusing.
- Cut 1 piece of Middle Support Fabric and corresponding Fusing.
- Cut 1 piece of Bottom Support Fabric and corresponding Fusing.
- Cut 1 piece of Top Support Fabric and corresponding Fusing.

Pocket Pieces

- Cut 46 pieces of 1-23 Pocket Fabric.
- Cut 23 pieces of 1-23 Pocket Fusing.
- Cut 2 pieces of 24th Pocket Fabric.
- Cut 1 piece of 24th Pocket Fusing.

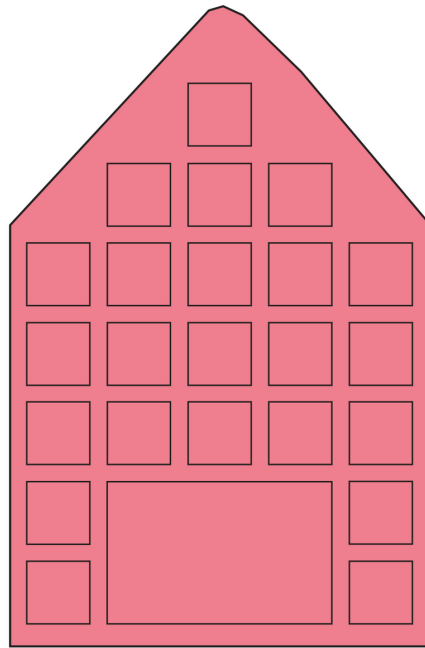
Decorative Elements

- Cut 1 piece of Roof Top Snow White Felt.
- Cut 1 piece of Bottom Front Snow White Felt.
- Cut 1 piece of Chimney Felt.
- Cut 1 piece of Chimney Snow White Felt.

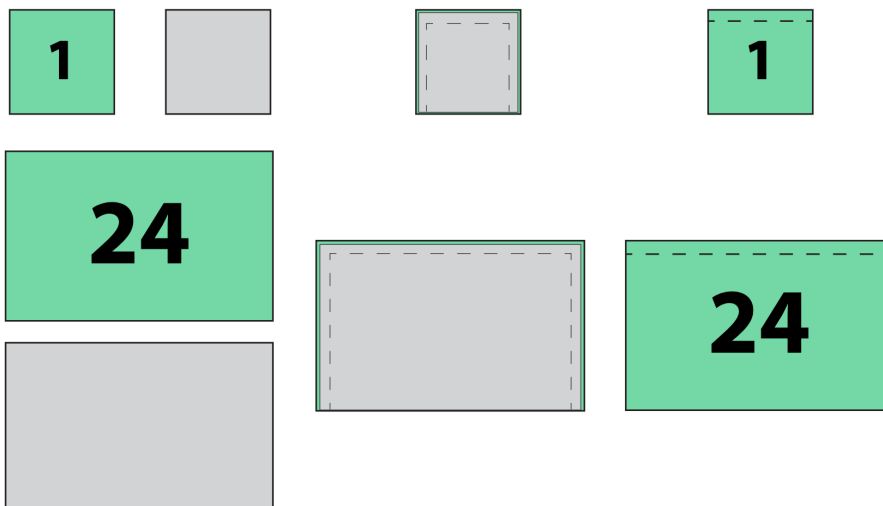
Note: Cut fusing 1 cm smaller on all sides for all pieces that require fusing. Iron the fusing to the wrong side of all pieces.

2. SEWING ALL THE DATES AND POCKETS

- Start with the main calendar front fabric piece laid right side up on the table. Transfer all pattern markings onto your piece.

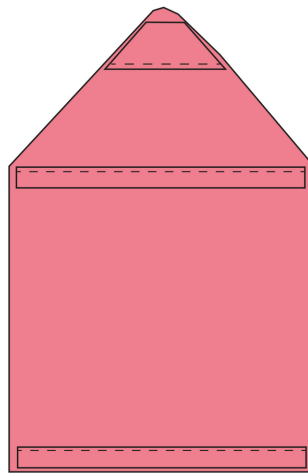


- Write or sew the dates on one side of the pocket pieces.
- Sew all 23 date pockets right sides together on three sides, ensuring the dates are upright. Trim the excess fabric, turn right side out, iron, and topstitch the edge opposite the raw edge; this is the top of the pocket.
- Sew the 24th date pocket right sides together on the two short and one long edges. Trim the excess fabric, turn right side out, iron, and topstitch the edge opposite the raw edge; this is the top of the pocket.



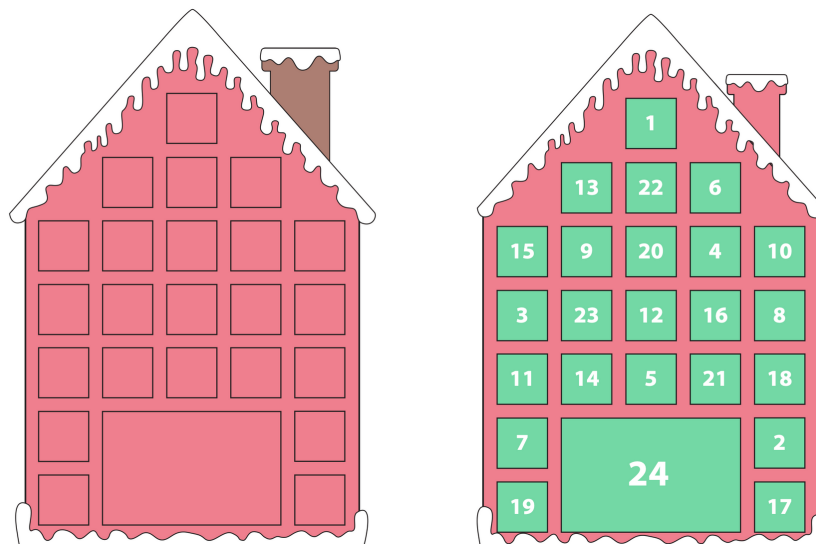
3. SEWING SUPPORT PIECES

- For the bottom and middle support pieces, fold back a seam allowance on both short sides to the wrong side and topstitch.
- Fold both in half lengthwise, right sides together, and sew along the length. Trim the excess fabric, turn right side out, iron, and pin into place on the main calendar middle and bottom to create two tubes for dowel sticks.
- For the top support piece, fold back a seam allowance on the longest edge and topstitch. Pin or baste to the main calendar back piece at the top to create a small pocket for an extra support dowel stick.



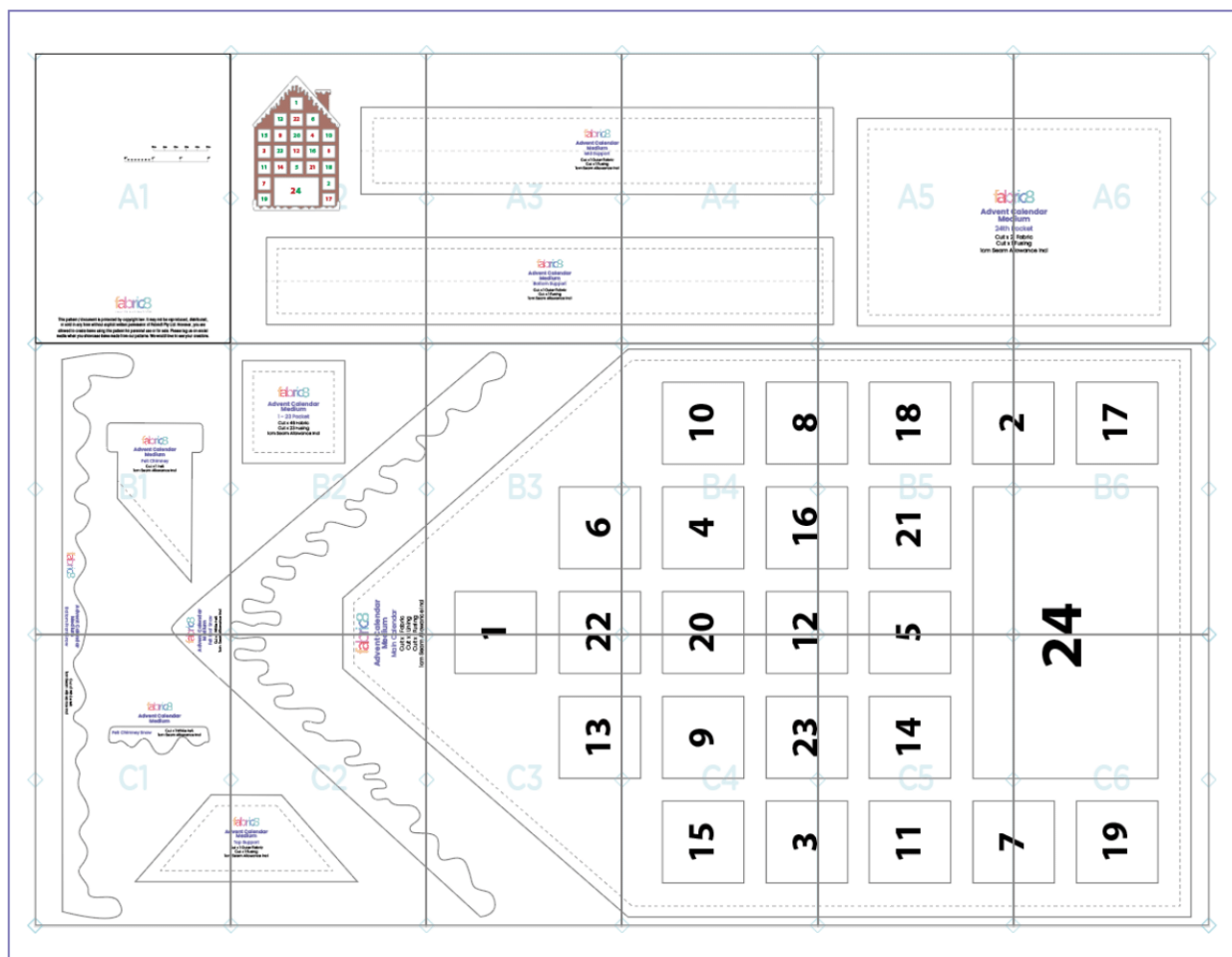
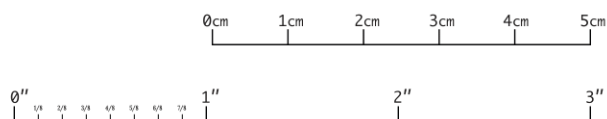
4. SEWING SNOW & POCKETS TO THE CALENDAR

- Pin all dates to the main calendar front piece, with the topstitched side at the top. Sew the pockets to the main calendar.
- Pin the chimney to the main calendar and pin the roof snow over the edge of the calendar and the bottom edge of the chimney. Topstitch to the main calendar. Add the chimney snow to the top of the chimney. Here, you can use your imagination and even try a hand blanket stitch to sew these on. Repeat with the bottom front snow at the lower edge of the calendar.

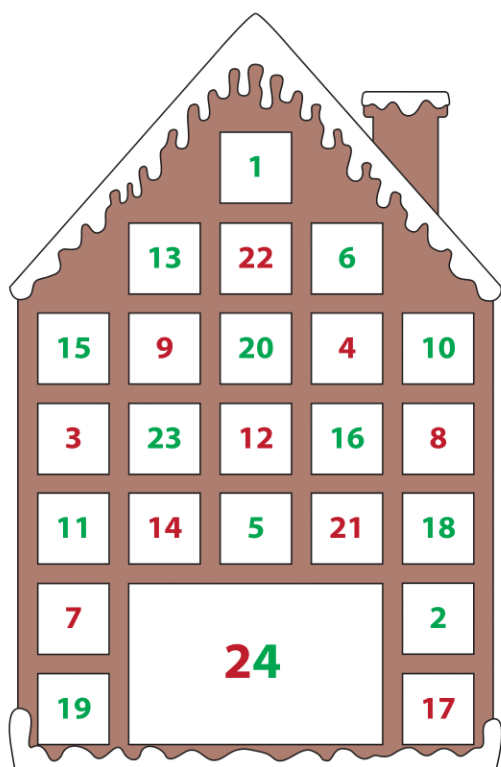


PRINTING INSTRUCTIONS:

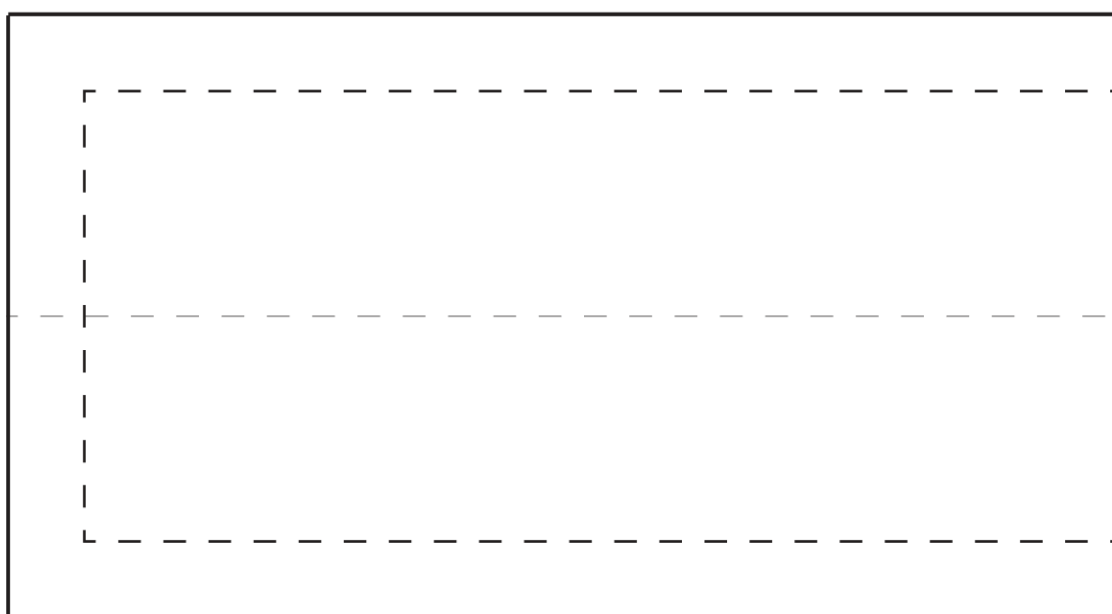
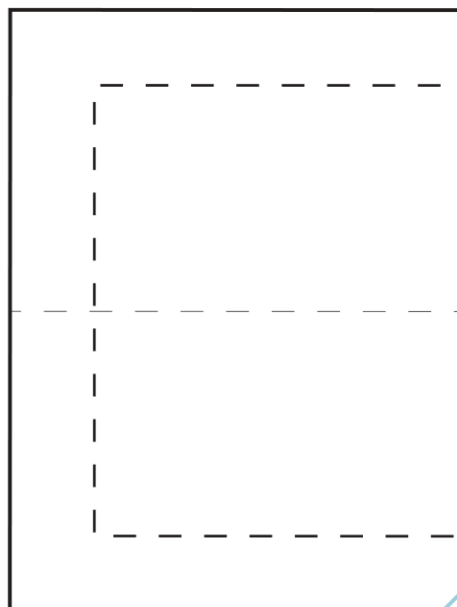
1. Start by only printing this page with the measurement scale (as below).
2. Ensure that your printer settings are correct:
 - Set your printer to "Do not scale" or to "100% scale". Set to A4.
 - Make sure that you have not selected "Print entire image" or "Fill entire paper". This will make your sizing incorrect.
 - You have to print your pattern at 100% scale.
3. Using a ruler or measuring tape, measure the inches or centimeters on the measurement scale below once this page has been printed out. Ensure that the measurement scale lines up with your ruler or measuring tape. If it does, it means you have selected the correct printer settings.
4. If your measurement scale lines up correctly, print out the rest of the pattern pages at 100% scale.
5. Cut out and line up the lines of the pattern pages. Ensure that the triangles in the corner all line up. Stick your pattern together as illustrated below.



This pattern/ document is protected by **copyright** law. It **may not be reproduced, distributed, or sold** in any form without the explicit written permission of Fabric8 Pty Ltd. However, you are allowed to create items using this pattern for personal use or for sale. Please tag us on social media when you showcase items made from this pattern. We would love to see your creations.



A2





**Advent Calendar
Medium**

Mid Support

Cut x 1 Outer Fabric
Cut x 1 Fusing
1cm Seam Allowance Incl

A3



**Advent Calendar
Medium**

Bottom Support

Cut x 1 Outer Fabric
Cut x 1 Fusing
1cm Seam Allowance Incl

A4

A5



Advent C
Med

24th F

Cut x 2

Cut x 1

1cm Seam A

ric8

Calendar
lium

Pocket

Fabric
Fusing
llowance Incl

A6



**Advent Calendar
Medium**

Felt Chimney

Cut x 1 Felt
1cm Seam Allowance Incl

B1



**Advent Calendar
Medium**
Bottom Front



**Advent Calendar
Medium**
Roof Snow
1 White Felt
1cm Seam Allowance Incl



Advent Calendar Medium

1 - 23 Pocket

Cut x 46 Fabric

Cut x 23 Fusing

1cm Seam Allowance Incl

B2



calendar

medium

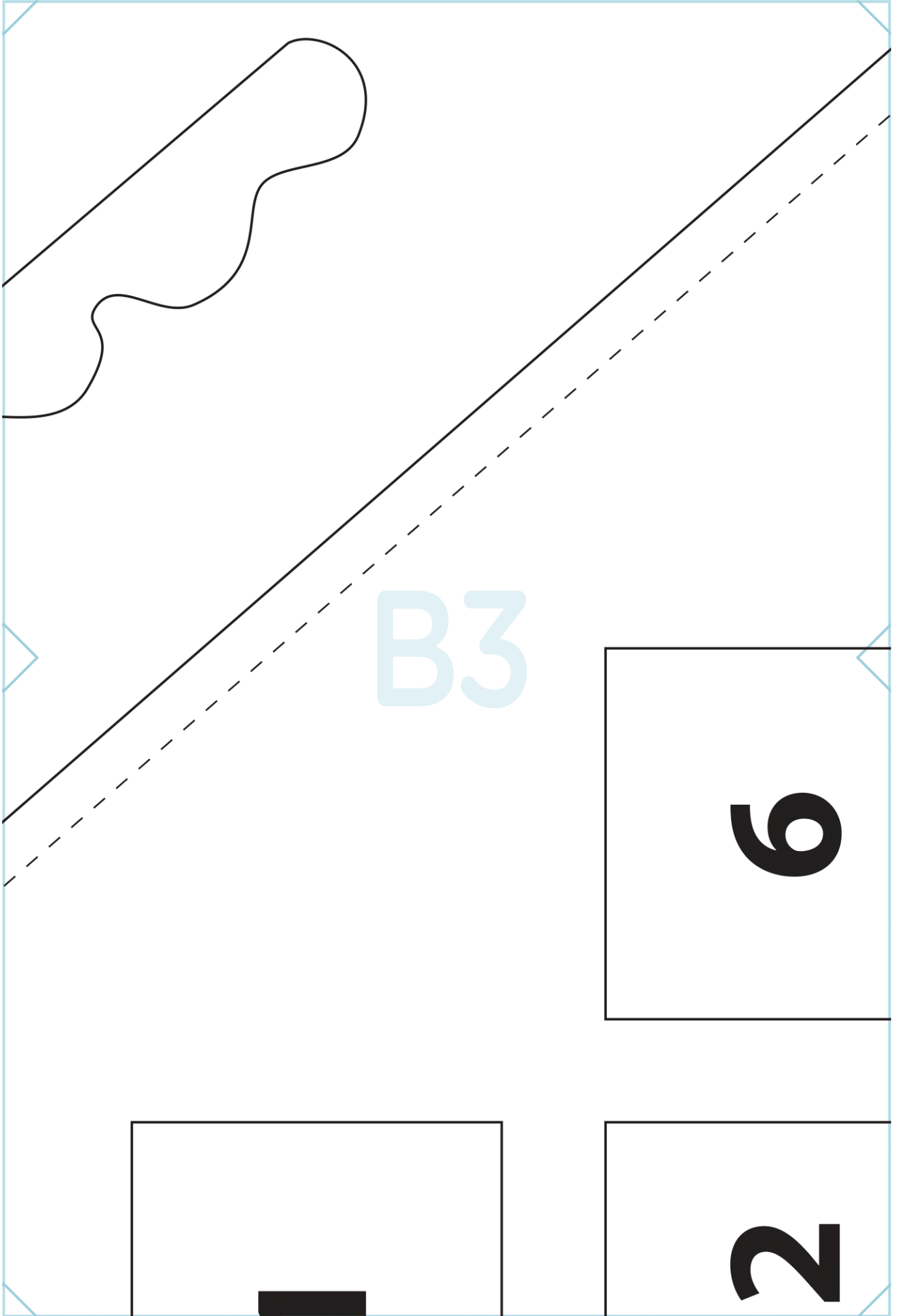
calendar

1 Fabric

1 Lining

Fusing

1cm Seam Allowance Incl



10

8

4

16

0

2

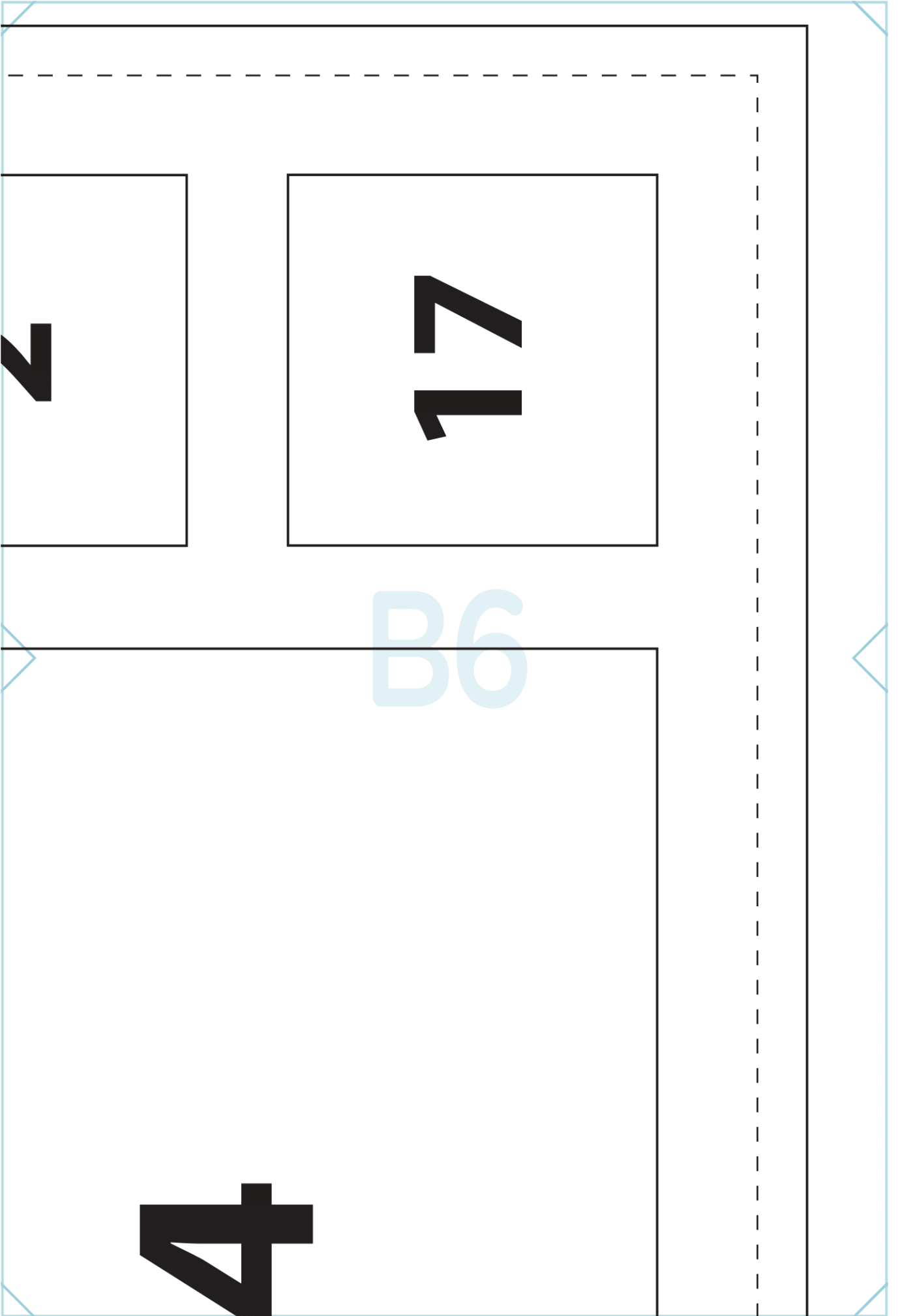
B4

18

21

10

B5



fab
Advent
Me
Felt R
Cut x
1cm Seam

fabric8
Advent Calendar
Medium

Felt Chimney Snow

Cut x 1 White Felt
1cm Seam Allowance Incl

C1

Ad

1cm

andar
Snow

Cut x 1 White Felt
1cm Seam Allowance Incl

fab

Advent Calendar
Medium

Main C

Cut x 1

Cut x 1

Cut x 1

1cm Seam A

C2

fabric8

Advent Calendar
Medium

Top Support

Cut x 1 Outer Fabric

Cut x 1 Fusing

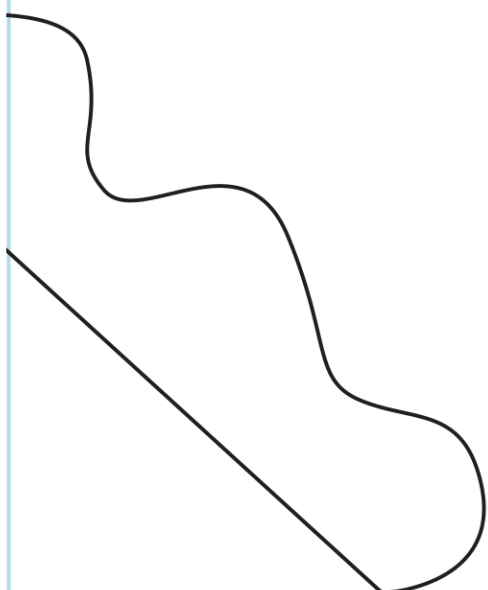
Seam Allowance Incl

2

13

C3

1



1

2

23

9

3

15

C4

11

14

11

7

C5

2

C6

19

1