

picnic blanket carry strap

WATCH THE VIDEO TUTORIAL:



Youtube: www.youtube.com/watch?v=98v7n8yRDG4

PRINTING INSTRUCTIONS:

- Print only the first page with 1x1 inch and/ or 2x2 cm blocks on the first page
- Set printer to 100% scale
- Avoid "Print Entire Image" or "Fill Entire Paper" options, as this will make your pattern print at the wrong size
- Measure printed 1x1 inch & 2x2 cm blocks with a ruler for accuracy
- If sizing is correct, print all pages at 100% scale
- Assemble and cut out the pattern

SUPPLIES & TOOLS:

The items listed are conveniently hyperlinked to their respective pages on the Fabric8 website, if available. Simply click on the desired item, and it will effortlessly open up in your web browser for easy access and purchase.

Fabric:

- [Off-cuts](#)

Supplies:

- [1/2 m velcro](#)

Tools:

- [Sewing machine bobbins](#)
- [Fabric scissors](#)
- [Fabric marker/ tailors chalk](#)
- [Pins](#)
- [Fabric clips](#)
- [Prym mini steam iron](#)
- [Table sized ironing board](#)
- [Rotary cutter](#)
- [Self-healing cutting mat](#)
- [Quilting ruler](#)
- [Paper scissors](#)
- [Paper glue](#)

1. PREPARING THE MATERIALS

- [Cut 2 Fabric Strap Around Pieces](#) (Add fusing for additional strength)
- [Cut 1 Fabric Top Handle Piece](#) (Add fusing for additional strength)
- [Cut 1 Fabric Top Connector Piece](#) (Add fusing for additional strength)

2. SEWING THE TOP HANDLE

- [Fold the Top Handle piece lengthwise with right sides together.](#)
- [Sew along the long raw edge.](#)
- [Turn the tube right side out, positioning the seam at the back center.](#)
- [Iron the piece and topstitch along both long edges.](#)

3. PREPARING THE TOP CONNECTOR

- [Fold the Top Connector Strap piece lengthwise with right sides together.](#)
- [Sew along the long raw edge.](#)
- [Turn the tube right side out, positioning the seam at the back center.](#)
- [Iron the piece and topstitch along both long edges.](#)

4. COMBINING TOP HANDLE & TOP CONNECTOR

- Align the short ends of the Top Handle and Top Connector pieces, matching the raw edges.
- Baste stitch or pin the pieces together.

5. SEWING THE STRAP AROUND PIECES

- Fold the two Strap Around pieces lengthwise with right sides together and pin them (do not sew yet).
- Mark the middle of the pinned long sides.
- Measure the width of the top pieces and mark this width on the long end of each Strap Around piece, starting from the middle mark you just made. Do not sew the marked sections; these will serve as openings for inserting the Top Handle pieces later.
- Sew along three raw edges of each Strap Around piece, leaving the marked section unsewn.
- Turn each tube right side out and iron them neatly.

6. ASSEMBLING THE STRAP

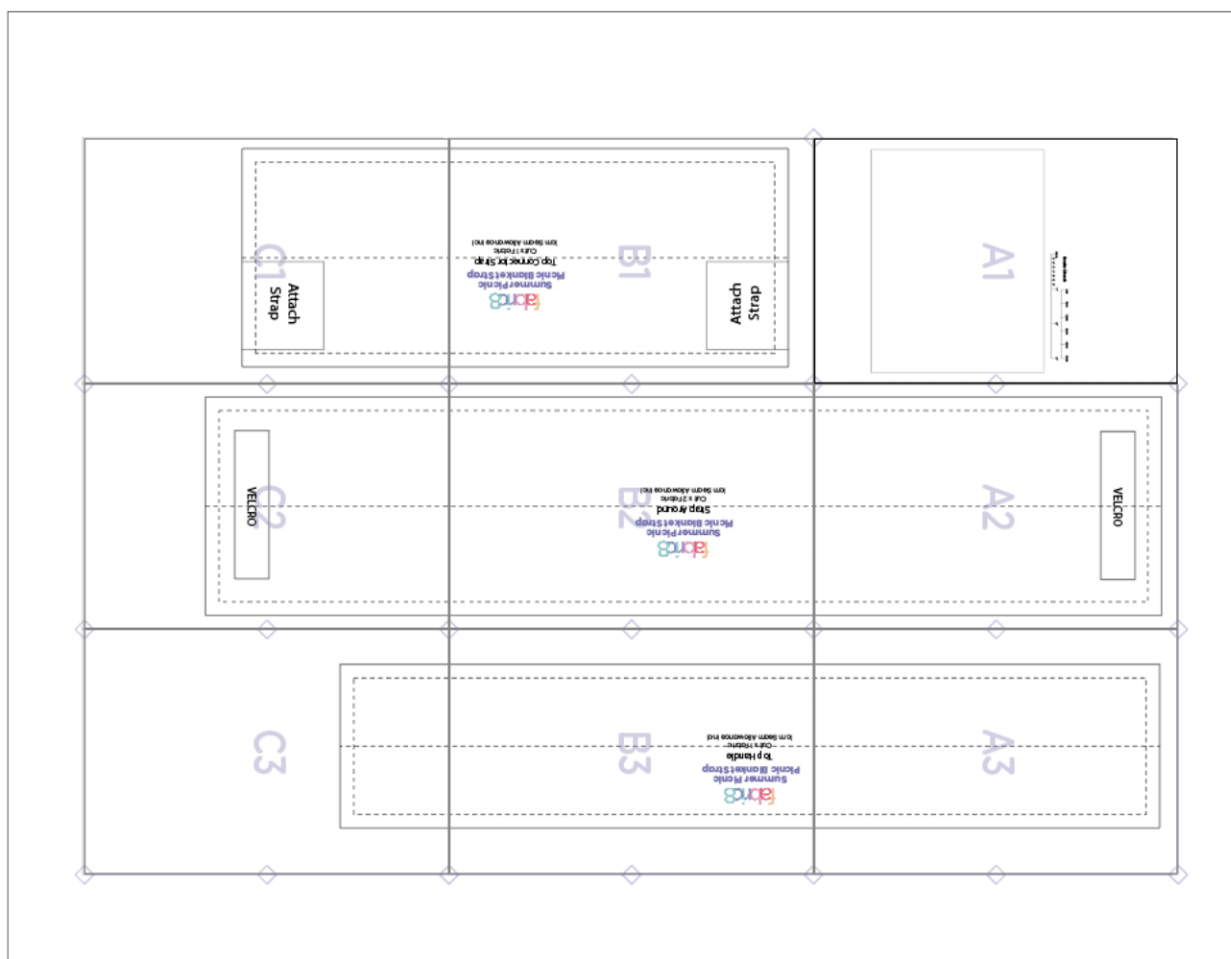
- Insert the combined Top Handle and Top Connector into the openings left in the Strap Around pieces.
- Pin the pieces in place.
- Topstitch all around the Strap Around pieces.

7. ADDING VELCRO

- Attach Velcro to the four short ends of the Strap Around pieces.

PRINTING INSTRUCTIONS:

1. Start by only printing this page with the measurement scale (as below).
2. Ensure that your printer settings are correct:
 - Set your printer to "Do not scale" or to "100% scale". Set to A4.
 - Make sure that you have not selected "Print entire image" or "Fill entire paper". This will make your sizing incorrect.
 - You have to print your pattern at 100% scale.
3. Using a ruler or measuring tape, measure the inches or centimeters on the measurement scale below once this page has been printed out. Ensure that the measurement scale lines up with your ruler or measuring tape. If it does, it means you have selected the correct printer settings.
4. If your measurement scale lines up correctly, print out the rest of the pattern pages at 100% scale.
5. Cut out and line up the lines of the pattern pages. Ensure that the triangles in the corner all line up. Stick your pattern together as illustrated below.



This pattern/ document is protected by **copyright** law. It **may not be reproduced, distributed, or sold** in any form without the explicit written permission of Fabric8 Pty Ltd. However, you are allowed to create items using this pattern for personal use or for sale. Please tag us on social media when you showcase items made from this pattern. We would love to see your creations.

VELCRO

A2

A3

Attach
Strap

B1



**Summer Picnic
Picnic Blanket Strap**

Top_Connector_Strap

Cut x 1 Fabric
1cm Seam Allowance Incl



**Summer Picnic
Picnic Blanket Strap**

Strap Around

Cut x 2 Fabric

1cm Seam Allowance Incl

21



Summer Picnic Picnic Blanket Strap

Top Handle

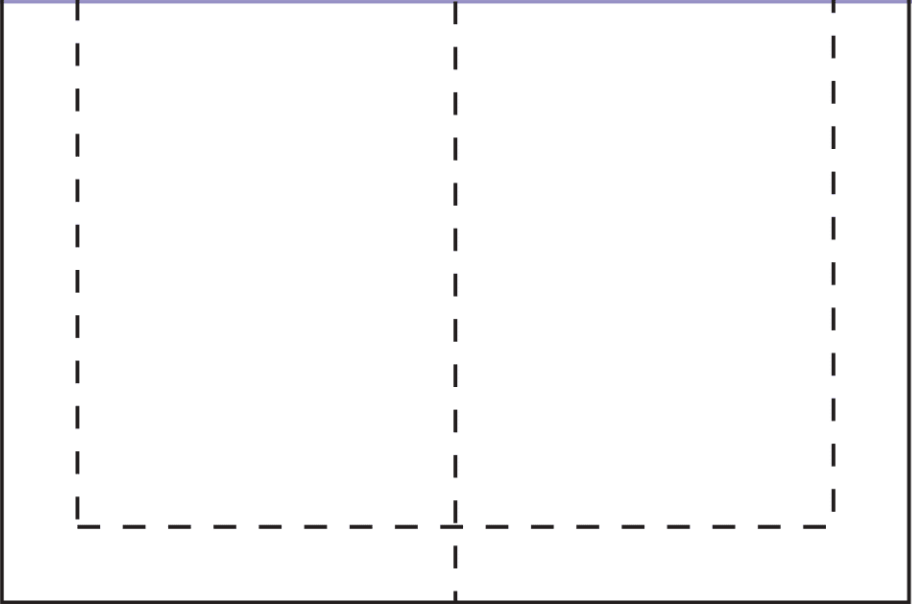
Cut x Fabric
1cm Seam Allowance Incl

B3

Attach
Strap

C2

VELCRO



C3