

fabric napkins

WATCH THE VIDEO TUTORIAL:



Youtube: www.youtube.com/watch?v=98v7n8yRDG4 and
www.youtube.com/watch?v=LjCcxMckheY (mitred corner & bias binding)

PRINTING INSTRUCTIONS:

- Print only the first page with 1x1 inch and/ or 2x2 cm blocks on the first page
- Set printer to 100% scale
- Avoid "Print Entire Image" or "Fill Entire Paper" options, as this will make your pattern print at the wrong size
- Measure printed 1x1 inch & 2x2 cm blocks with a ruler for accuracy
- If sizing is correct, print all pages at 100% scale
- Assemble and cut out the pattern

SUPPLIES & TOOLS:

The items listed are conveniently hyperlinked to their respective pages on the Fabric8 website, if available. Simply click on the desired item, and it will effortlessly open up in your web browser for easy access and purchase.

Fabric:

- 4 napkins from 1m x 1m

Supplies:

- Bias binding

Tools:

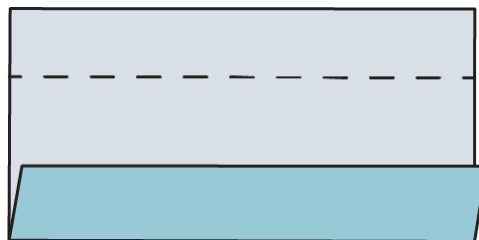
- [Sewing machine bobbins](#)
- [Fabric scissors](#)
- [Fabric marker/ tailors chalk](#)
- [Pins](#)
- [Fabric clips](#)
- [Prym mini steam iron](#)
- [Table sized ironing board](#)
- [Rotary cutter](#)
- [Self-healing cutting mat](#)
- [Quilting ruler](#)
- Paper scissors
- Paper glue

1. PREPARING THE MATERIALS

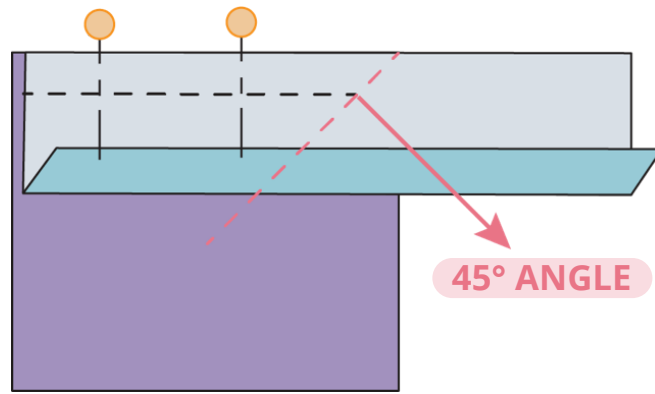
- Cut a square of fabric for your napkin as per the pattern.
- Decide what you want to do with your edges: Mitred corner bias binding or just mitred corner?
- Follow the relevant instructions below.

2. INSTRUCTIONS FOR MITRED CORNER BIAS BINDING

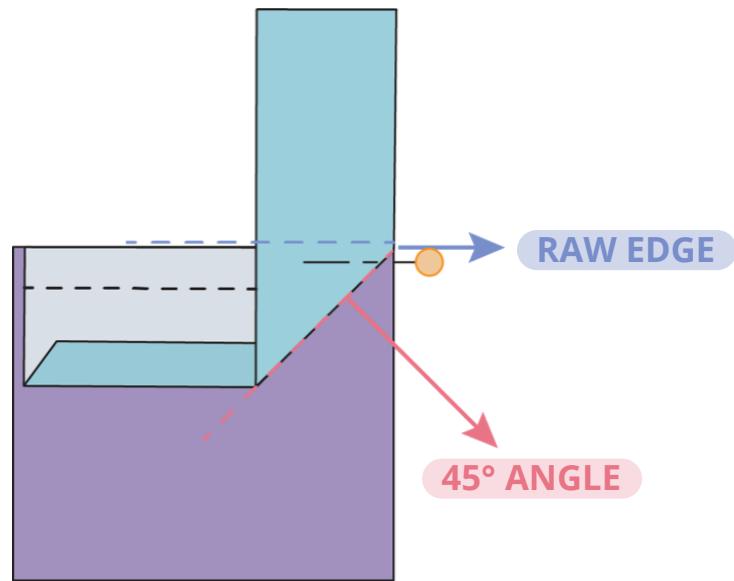
- For Single or Double Folded Binding: Unfold one side of the binding as shown in the subsequent image.



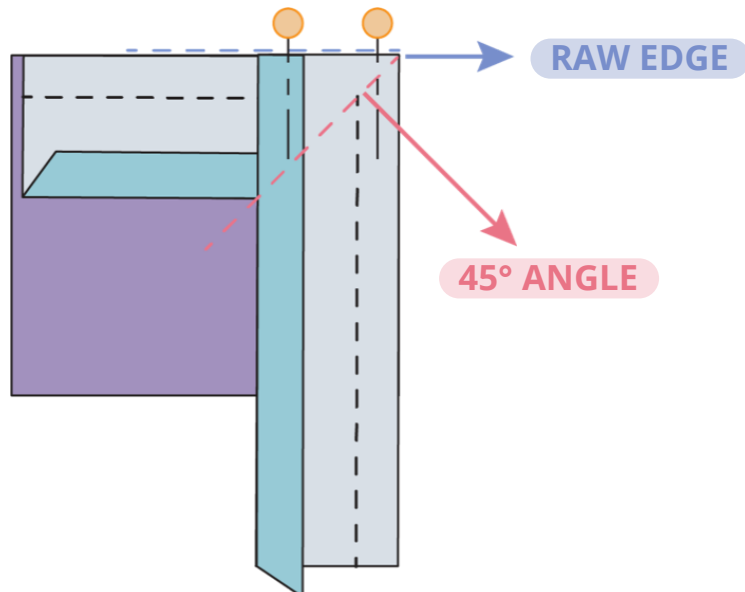
- Align this unfolded section with the fabric's right side, ensuring raw edges coincide, and pin. Sew along the binding's fold line, halting at a 45-degree angle from the corner.



- Angle the binding upwards at 45 degrees as illustrated below and pin.

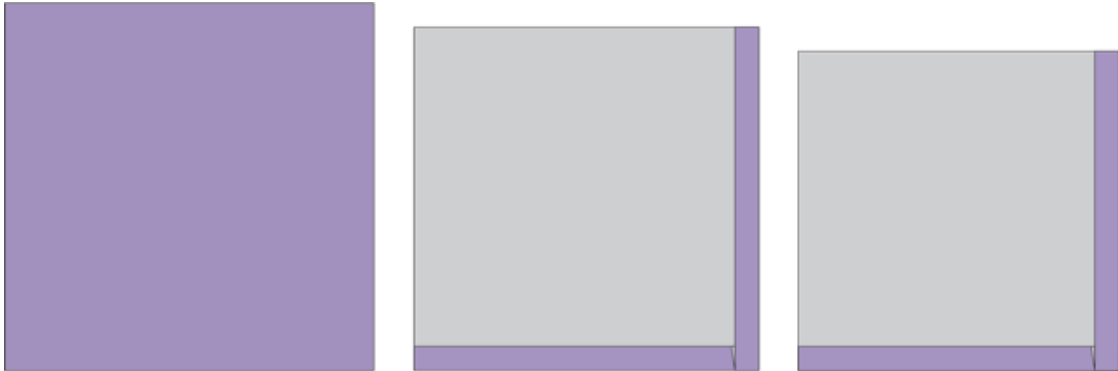


- Realign the binding's top edge as shown and pin. Initiate sewing from the 45-degree mark.

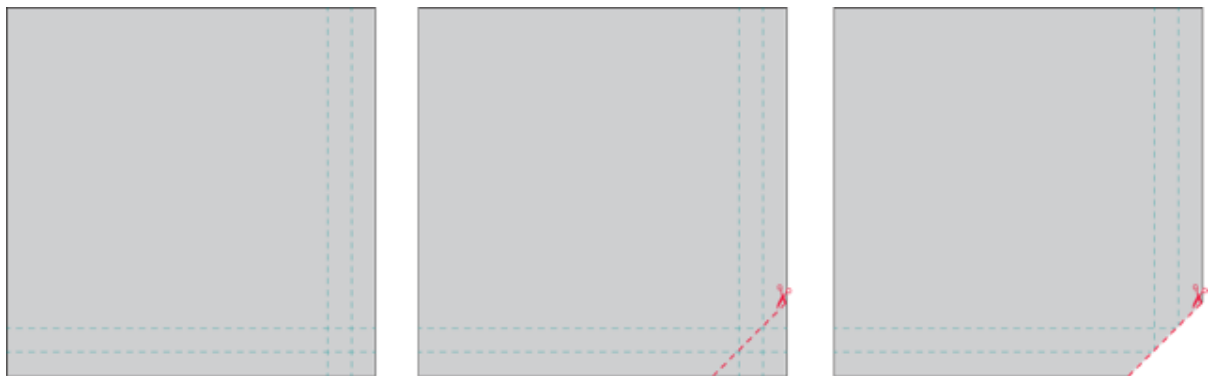


3. INSTRUCTIONS FOR ONLY MITRED CORNER

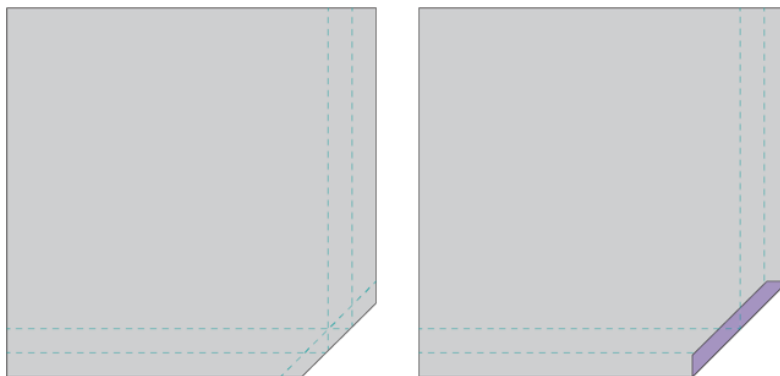
- On all edges, iron to the wrong side 1/2 your hem/seam allowance. Repeat iron the same amount again. At the corners, make sure you fold and iron evenly, and that you steam press all. We will be using the fold marks.



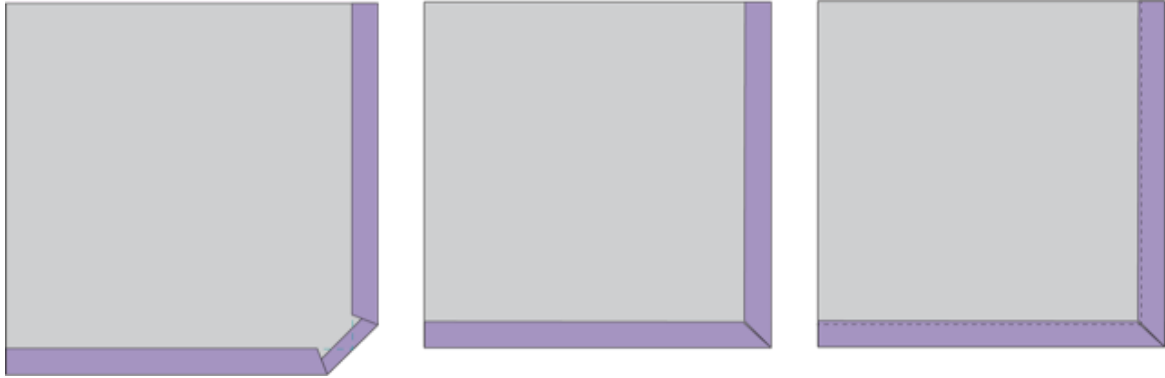
- Unfold everything. Find the middle square formed by the folds. Mark a line through its corners all the way across as below. Cut on the line just drawn as below.



- Fold on this line as below so that the fold lines line up with each other. Iron slightly, making sure not to lose your other fold lines.

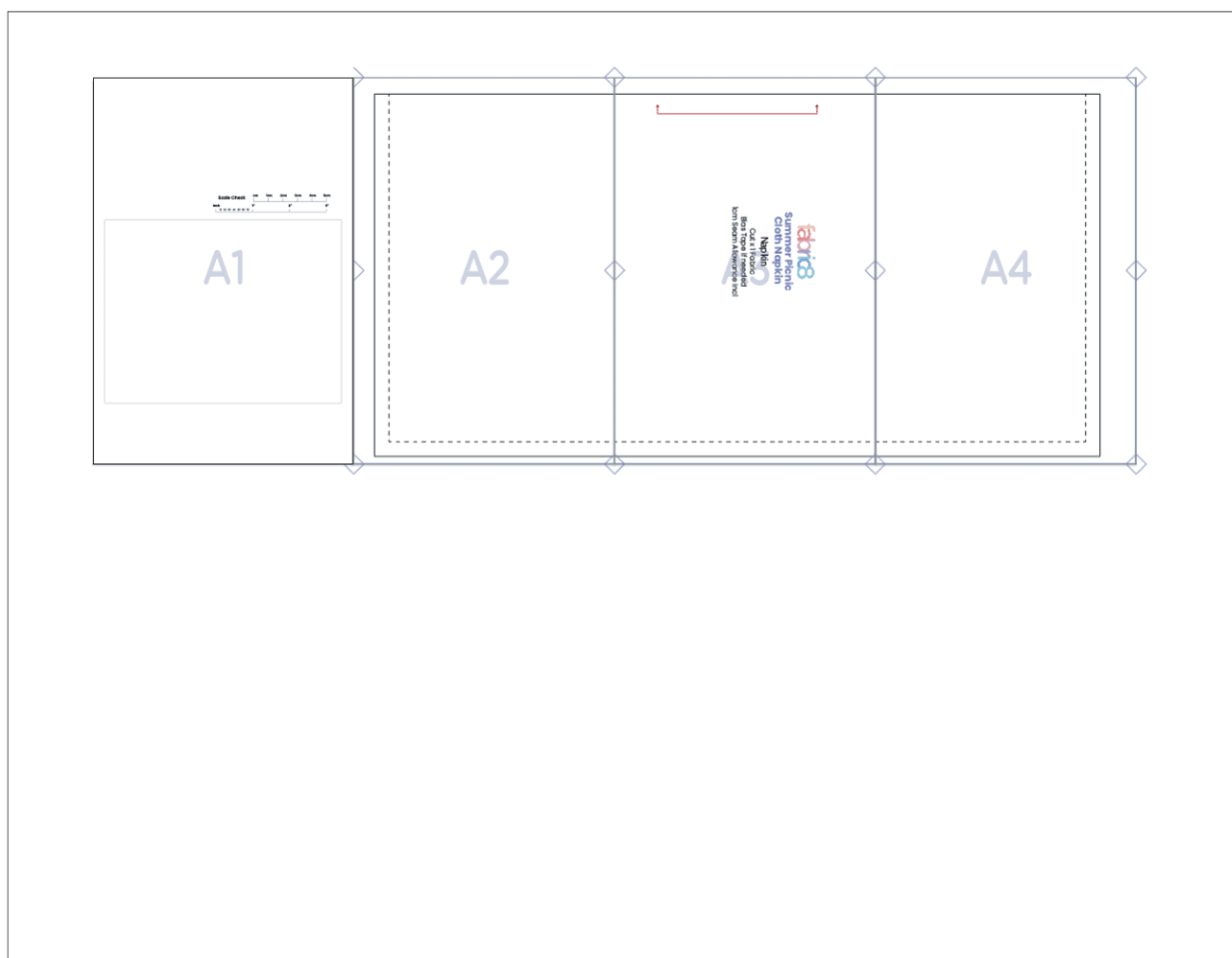


- Now fold back your first fold and iron. Next fold back your second fold and iron. Pin and sew a topstitch along the edge.



PRINTING INSTRUCTIONS:

1. Start by only printing this page with the measurement scale (as below).
2. Ensure that your printer settings are correct:
 - Set your printer to "Do not scale" or to "100% scale". Set to A4.
 - Make sure that you have not selected "Print entire image" or "Fill entire paper". This will make your sizing incorrect.
 - You have to print your pattern at 100% scale.
3. Using a ruler or measuring tape, measure the inches or centimeters on the measurement scale below once this page has been printed out. Ensure that the measurement scale lines up with your ruler or measuring tape. If it does, it means you have selected the correct printer settings.
4. If your measurement scale lines up correctly, print out the rest of the pattern pages at 100% scale.
5. Cut out and line up the lines of the pattern pages. Ensure that the triangles in the corner all line up. Stick your pattern together as illustrated below.



This pattern/ document is protected by **copyright** law. It **may not be reproduced, distributed, or sold** in any form without the explicit written permission of Fabric8 Pty Ltd. However, you are allowed to create items using this pattern for personal use or for sale. Please tag us on social media when you showcase items made from this pattern. We would love to see your creations.

A2



Summer Picnic Cloth Napkin

Napkin

Cut x 1 Fabric

Bias Tape if needed

1cm Seam Allowance Incl



A4