

# Carry All Circle Bag Instructions

## Step 1

Decide on the Fabric for your Bag and Lining.

- Cut 1 x Outer Fabric Bag Body
- Cut 1 x Lining Fabric Bag Body
- Cut 1 x Outer Fabric Bag Flap
- Cut 1 x Lining Fabric Bag Flap

## Step 2

Flap Assembly:

Place 2 flap pieces with right side to right side.

Stitch all round leaving a 6cm turn out hole unsewn. (always try and place turnout hole on a straight piece as curves are more difficult when closing hole after)

Trim down seam allowance and do your nips on the curve and cut away extra fabric at corners. Do not trim seam allowance or do nips at turn out hole part.

Turn right side out and iron neatly, Topstitch all the way around.

## Step 3

Bag Assembly:

Fold outer fabric circle piece in half. Mark At fold on both sides.

Cut 2 pieces of Bias Binding longer than  $\frac{1}{2}$  your circle piece outside length. Iron both pieces of bias binding in half. Turn in one side of binding as you iron to finish edge.

Take your outer fabric circle piece and lay down right side up. Starting 1cm away from your first mark on circle, Place 1<sup>st</sup> piece of binding with the turned in edge on 1cm away mark. Now neatly pin binding  $\frac{1}{2}$  around until you reach other side of circle, stop pinning 1cm away from  $\frac{1}{2}$  way mark. Measure and turn in binding edge to finish and pin until 1cm away from mark. Repeat this on the other  $\frac{1}{2}$  of your outer fabric circle piece.

Now place lining circle piece right side down onto outer fabric circle piece. Stitch circles together, with 1cm seam allowance, leaving a turn out hole.

Trim down seam allowance and do your nips all the way around circle. Do not trim seam allowance or do nips at turn out hole part

Turn right side out and iron neatly, Topstitch all the way around. Thread your drawstring through the bias binding casing. Before pulling on your drawstrings we have to attach the flap.

## Step 4

Attach Flap:

Sew a piece of Velcro onto the circle piece on the one side (at drawstring opening) 7cm in from circle edge.

Sew a piece of Velcro to the rounded inside of your flap. Place your flap 7cm in from edge of Circle on the opposite side of the piece of Velcro and sew to circle piece. Now you may DRAW those Strings.

Fabric:

1 meter outer fabric

1 meter lining fabric

4 meter Bias Binding

Small Piece of Velcro

4m Draw Cord

Supplies:

Seralon thread

Tools:

Sewing machine bobbins

Fabric scissors

Fabric marker/ tailors chalk

Pins

Fabric clips

Prym mini steam iron

Mini ironing board

Rotary cutter

Self-healing cutting mat.

Quilting ruler

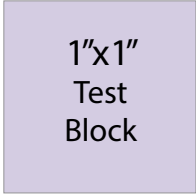
Quilting ruler handle

Paper scissors

Paper glue

Tape measure

Hand sewing needle.



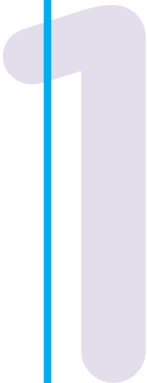
Small Bag

Medium Bag

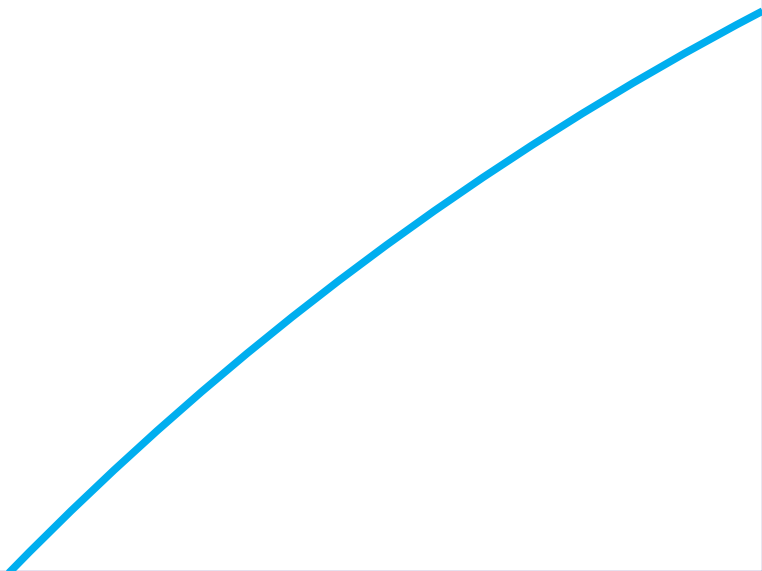
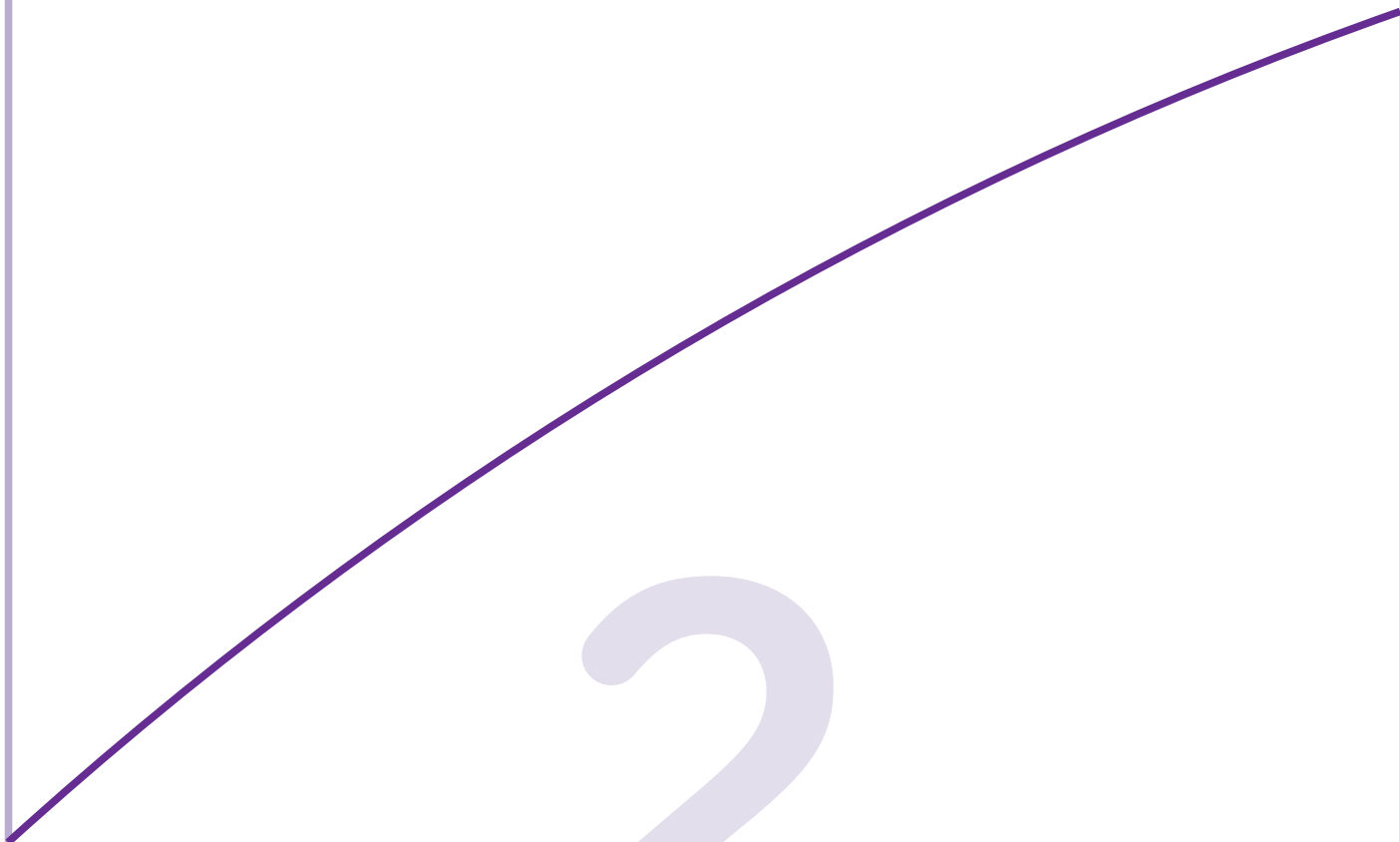
Large Bag

**fabric8**  
**CARRY ALL**  
**CIRCLE BAG**  
**BAG FLAP**

Cut x 2 Fabric  
1cm Seam Allowance Incl

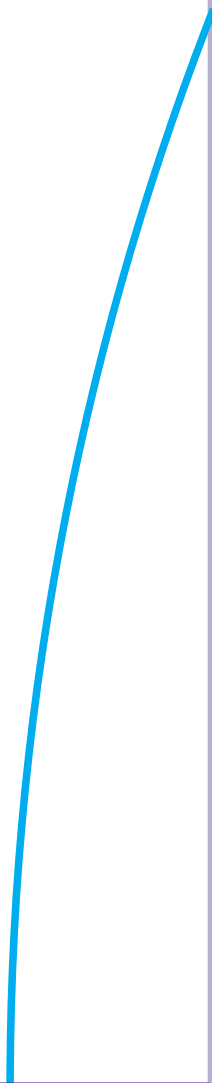


2



3

4



5





**CARRY ALL  
CIRCLE BAG  
BAG BODY**

Cut x 1 Fabric  
Cut x 1 Lining  
1 cm Seam Allowance Incl

9

