

# Bucket / Sun Hat Instructions

## Step 1

### **Cut out Pattern:**

Decide on the Fabric for your Hat inside and outside.

- Cut 1 x Outer Fabric Hat Top
- Cut 1 x Lining Fabric Hat Top
- Cut 1 x Outer Fabric Hat Brim
- Cut 1 x Lining Fabric Hat Brim
- Cut 1 x Outer Fabric Hat Side
- Cut 1 x Lining Fabric Hat Side
- Cut 1 x Interfacing for Brim for Stiffer Brim
- Cut 2 x Compressed Batting (Optional)

## Step 2

### **Prepare the Brim:**

Begin by applying a sturdy fusible interfacing, like Compressed Batting, to the reverse side of one of the brim pieces.

## Step 3

### **Join the Side and Brim:**

Fold both the Side and Brim pieces in half, ensuring the right sides are facing each other, and stitch the short ends together.

## Step 4

### **Connect the Top and Side:**

Align the top shorter edge of the side piece to the circumference of the top piece, ensuring all notches are matched. With the right sides facing each other, pin and sew the top piece to the side piece.

## Step 5

### **Attach the Brim to the Side:**

Pin the inner edge of the Brim to the lower edge of the Side piece, with the right sides facing each other, and sew them together.

## Step 6

### **Secure the Seams:**

Press the seams towards the hat's interior and secure them with an edgestitch.

## Step 7

### **Construct the Lining:**

Repeat steps 2 to 5 for the lining, but remember to leave a gap of about 2-3 inches (5-7 cm) in the side seam. This will be used later to invert the hat.

## Step 8

### **Combine the Lining and Hat:**

Position the lining and the hat exterior together, ensuring the right sides are facing each other and the seams are aligned. Pin around the edge of the brim and sew them together along the brim's perimeter.

## Step 9

### **Turn Out the Hat:**

Through the hole left in the lining, turn the hat to its right side.

## Step 10

### **Seal the Gap:**

Pin hole closed and sew closed by hand or machine.

## Step 11

### **Prepare for Final Stitching:**

Flatten the edges of the brim by using a steam iron and a tailors clapper to get them ready for the final stitching.

Toptitch multiple rows around the brim's perimeter. You can use a spiral stitch that starts from the edge of the brim and continues to the base of the hat where the brim and side meet.

### **Fabric & Supplies:**

½ meter outer fabric

½ meter lining fabric

½ meter Fusible Compressed Batting

Seralon thread

### **Tools:**

Sewing machine bobbins

Fabric scissors

Fabric marker/ tailors chalk

Pins

Fabric clips

Prym mini steam iron

Mini ironing board

Rotary cutter

Self-healing cutting mat.

Quilting ruler

Quilting ruler handle

Paper scissors  
Paper glue  
Tape measure  
Hand sewing needle.



1"x1"  
Test  
Block

2x2cm  
Test  
Block

## BUCKET & SUN HAT TOP L - XL

1



## BUCKET & SUN HAT TOP L - XL

Cut x 1 Outer Fabric  
Cut x 1 Lining Fabric

fabric8

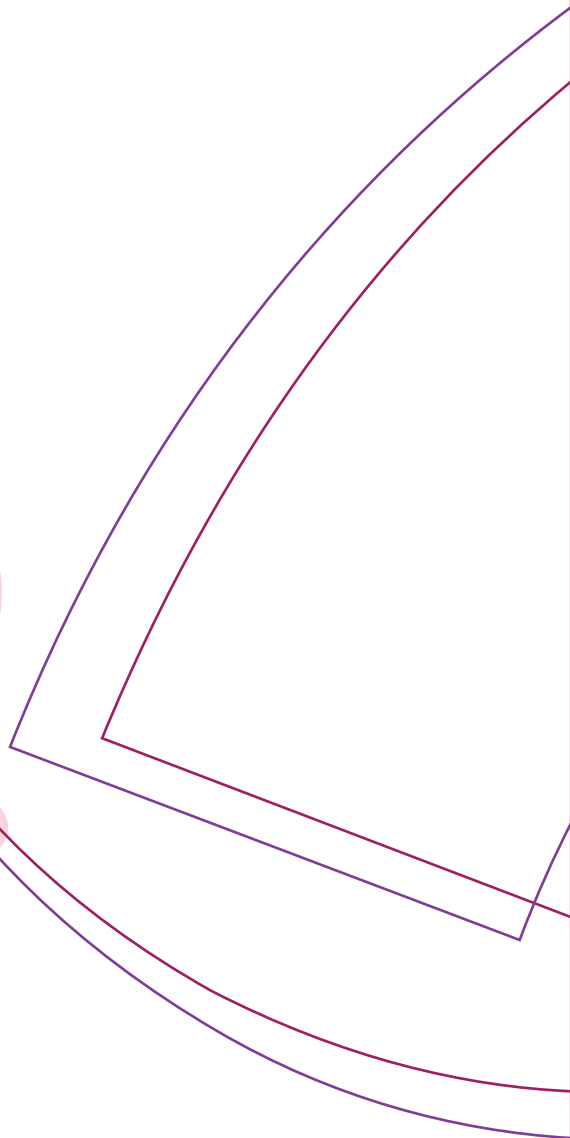
SUN HAT

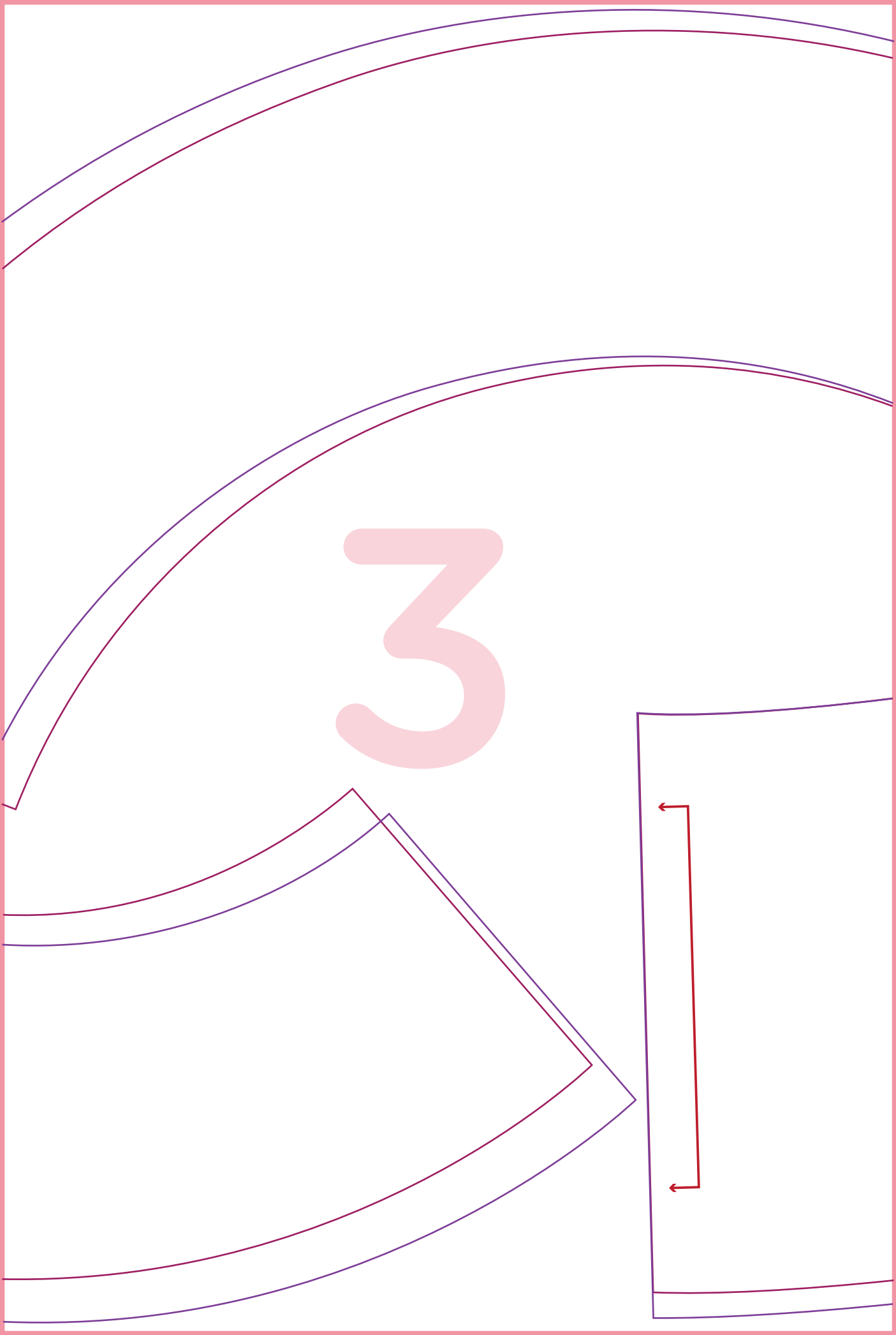
BRIM L - XL

Cut x 1 On Fold Outer Fabric

Cut x 1 On Fold Lining Fabric

2





**fabric8**  
**BUCKET HAT**  
**BRIM L - XL**  
Cut x 1 On Fold Outer Fabric  
Cut x 1 On Fold Lining Fabric

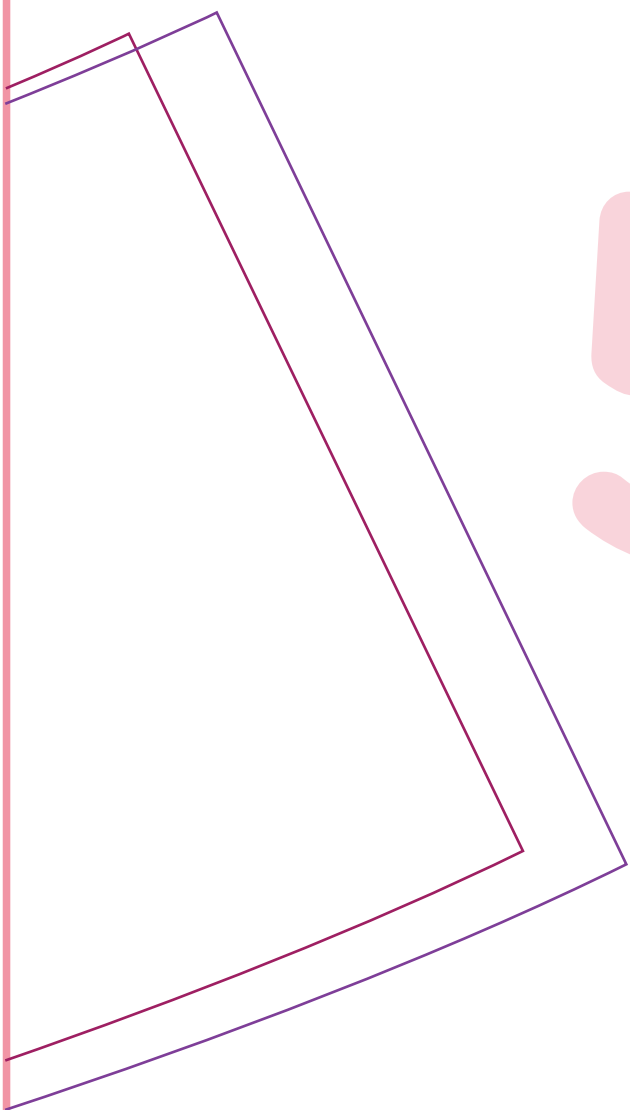
4

**fabric8**

**BUCKET HAT**  
**SIDE L - XL**

Cut x 1 On Fold Outer Fabric  
Cut x 1 On Fold Lining Fabric

5





1"x1"  
Test  
Block

2x2cm  
Test  
Block

**BUCKET & SUN HAT  
TOP S - M**

6



**BUCKET & SUN HAT  
TOP - S-M**

Cut x 1 Outer Fabric  
Cut x 1 Lining Fabric

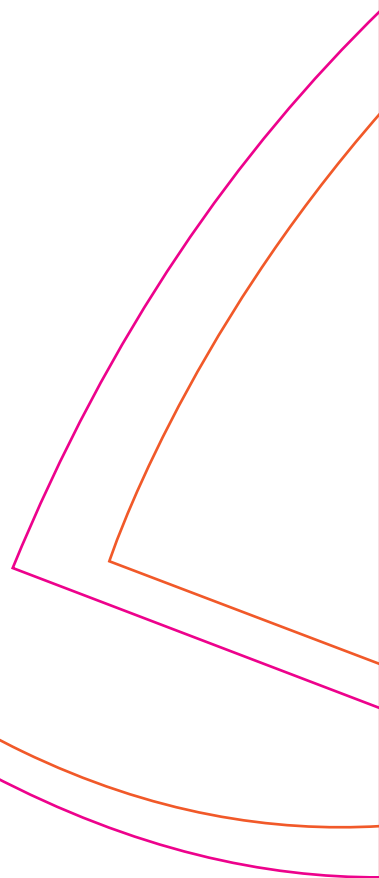
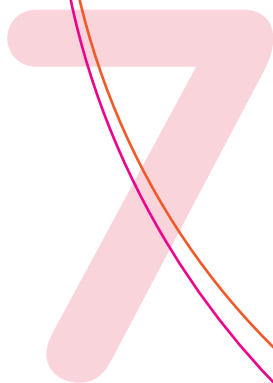
fabric8

**SUN HAT**

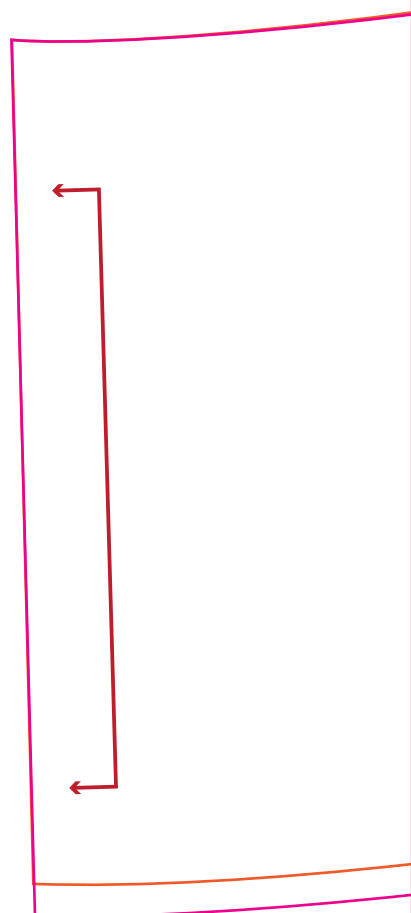
**BRIM S - M**


Cut x 1 On Fold Outer Fabric

Cut x 1 On Fold Lining Fabric



8





**BUCKET HAT**  
**BRIM S - M**  
Cut x 1 On Fold Outer Fabric  
Cut x 1 On Fold Lining Fabric



**BUCKET HAT**  
**SIDE S - M**

Cut x 1 On Fold Outer Fabric  
Cut x 1 On Fold Lining Fabric



10

