

Beginner Sewing Patterns & Videos

Patterns, Shopping Lists & Video Tutorials:
Start Sewing Today With Some Easy, Usable
& Giftable Projects!

Pattern Book | Project 52

Japanese Style Craft Apron



www.fabric8.co.za
info@fabric8.co.za
061 533 4412



Japanese Style Craft Apron

Watch The Video Tutorial



Youtube: <https://www.youtube.com/watch?v=E3x9kiGqygc>



Instagram: https://www.instagram.com/fabric8_sa/channel/



Facebook: <https://www.facebook.com/Fabric8.co.za>

Printing Instructions

1. Start by only printing the first page of the pattern with the 1 inch by 1 inch & 2cm by 2cm blocks at the bottom.
2. Ensure that your printer is set to print 100%.
 - a. Make sure you haven't selected "Print Entire Image" or "Fill Entire Paper" - this will make your sizing incorrect.
 - b. You must scale the page to 100%.
3. Measure the 1 inch by 1 inch & 2cm by 2cm blocks with a ruler once it's printed and make sure that the size is correct before printing all of the pages.
4. If everything is correct, print all pages at 100% scale.
5. Stick your pattern together and cut it out.

Supplies & Tools List

These items are hyperlinked to where you can find them if they are available on the Fabric8 website. **Simply click on the item you need, and it will open up in your web browser.**

Fabric:

- 1 ½ meter fabric

Supplies:

- [Seralon thread](#)

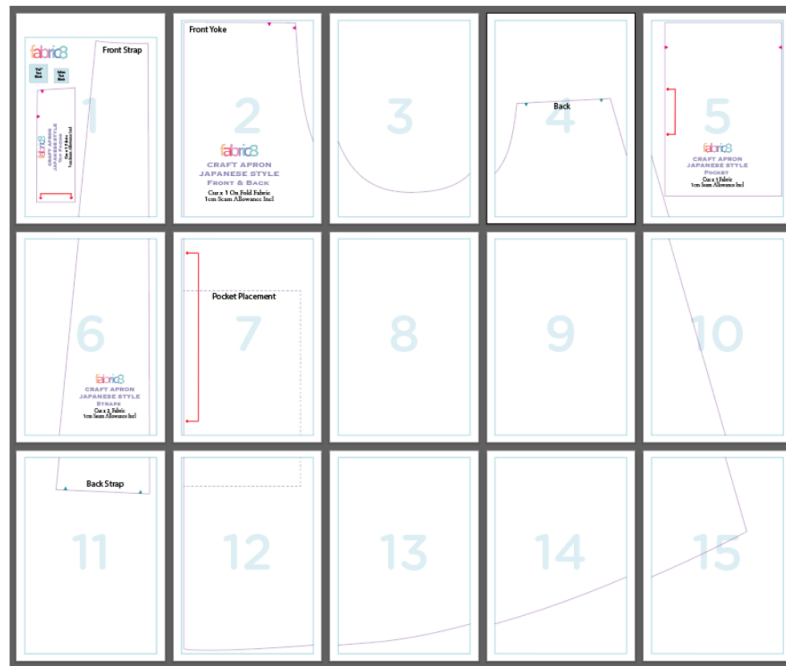
Tools:

- [Sewing machine bobbins](#)
- [Fabric scissors](#)
- [Fabric marker/ tailors chalk](#)
- [Pins](#)
- [Fabric clips](#)
- [Prym mini steam iron](#)
- [Mini ironing board](#)
- [Rotary cutter](#)
- [Self-healing cutting mat](#)
- [Quilting ruler](#)
- [Quilting ruler handle](#)
- Paper scissors
- [Paper glue](#)
- [Tape measure](#)
- [Hand sewing needle](#)

Japanese Style Craft Apron

• Step 1:

- Cut 1 x apron front/ back on fold.
- Cut 1 x pocket on fold.
- Cut 1 x facing on fold.
- Cut 2 x straps.
- Overlock all pattern pieces.
 - Pattern layout and stick together sample:



• Step 2: Pocket

- Fold & iron 5mm seam allowance to wrong side on one long side.
- Fold & iron again 3cm seam allowance to wrong side on same side.
- On right side topstitch the top of pocket with 2 rows of stitches.
- Now fold & iron 1cm seam allowance to wrong side on 3 other sides.
- Mark the pocket placement on your front/ back pattern piece and pin pocket in place. Sew down the pocket.

• Step 3: Straps

- Pin a 1cm seam allowance to the wrong side on both long sides of straps. Iron to keep flat and in position.

• Step 4: Facing & front straps

- Pin facing to front yoke top right side to right side.
- Take folded (1cm seam allowance) front straps and sandwich into the top seam of yoke at the outer edges (left & right) with seam allowance folded.
- Trim down the corners and turn yoke right side out, this will form a 1cm seam allowance on the side/ arm hole of the apron. Finish this by ironing the rest of side/ arm hole in towards the wrong side.

- **Step 5: Back straps & finishing off**

- At back center opening of apron fold a 5mm seam allowance to wrong side and iron flat, fold again 1cm and iron flat.
- Insert back straps into this fold at edge of the center back and pin in place. Remember that straps cross over each other in back.
- Finish your apron by sewing a topstitch all around where you ironed in the seam allowance. Also fold and sew the hem.



Japanese Style Craft Apron



1"x1"
Test
Block

2x2cm
Test
Block

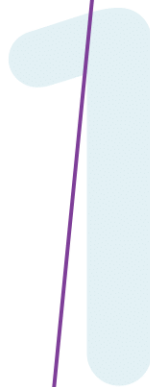


**CRAFT APRON
JAPANESE STYLE
TOP FACING**

Cut x 1 Fabric
1cm Seam Allowance Incl



Front Strap



Front Yoke

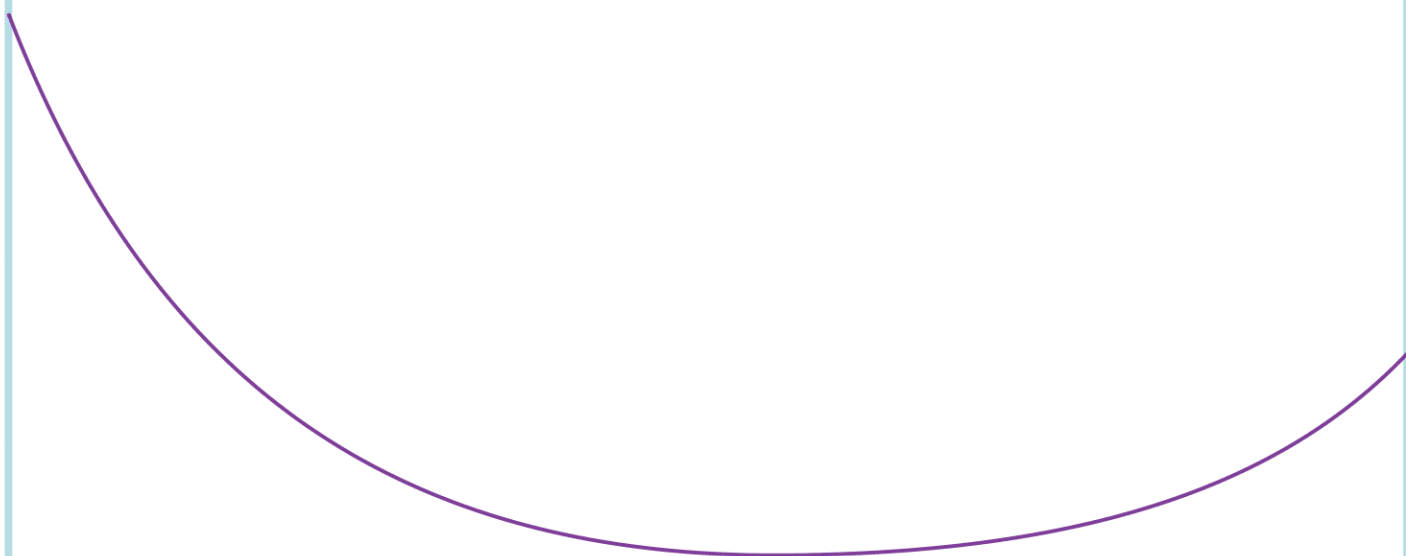
2



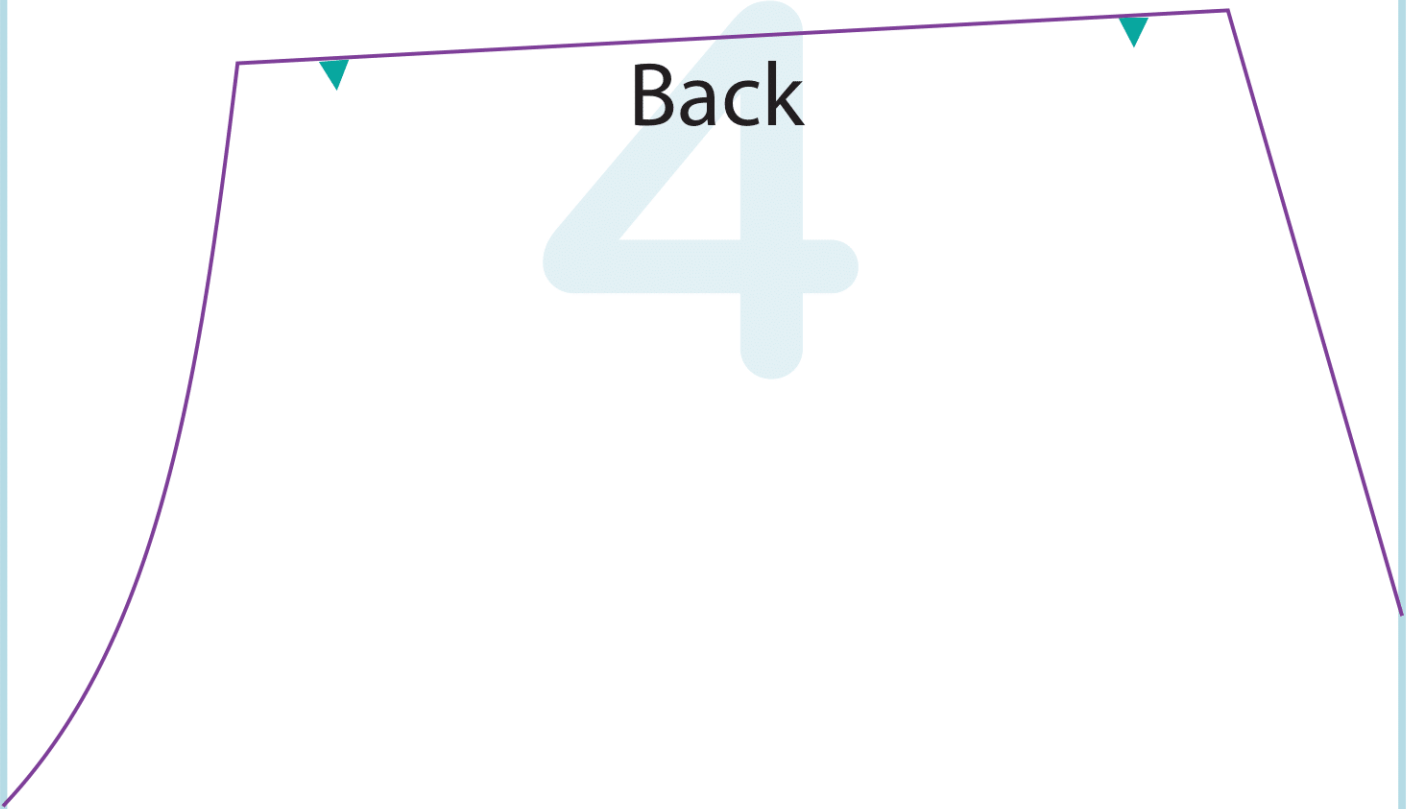
CRAFT APRON JAPANESE STYLE FRONT & BACK

Cut x 1 On Fold Fabric
1cm Seam Allowance Incl

3



Back





5



**CRAFT APRON
JAPANESE STYLE
POCKET**

Cut x 1 Fabric
1cm Seam Allowance Incl

6



**CRAFT APRON
JAPANESE STYLE
STRAPS**

Cut x 2 Fabric
1cm Seam Allowance Incl



The diagram shows a light blue rectangular frame representing a book cover. A vertical purple line is positioned on the left side, and a horizontal purple dashed line is positioned across the middle. A red line starts at the top left corner, goes down vertically, and then turns left horizontally, ending with an arrow pointing towards the left edge. Another red line starts at the bottom left corner, goes up vertically, and then turns left horizontally, ending with an arrow pointing towards the left edge. The text 'Pocket Placement' is centered in the upper half of the frame, and a large light blue number '7' is centered below it.

Pocket Placement

7

8

10

Back Strap

11

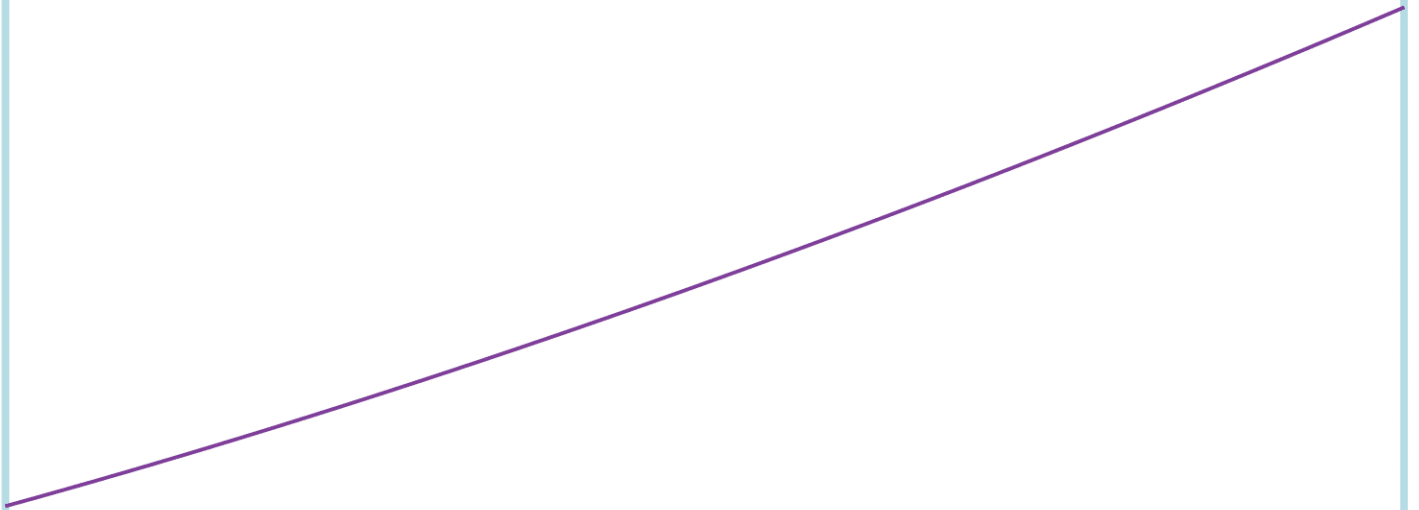


12

13



14



15

