

Beginner Sewing Patterns & Videos

Patterns, Shopping Lists & Video Tutorials:
Start Sewing Today With Some Easy, Usable
& Giftable Projects!

Pattern Book | Project 51

Craft Bucket Bag



www.fabric8.co.za
info@fabric8.co.za
061 533 4412



Craft Bucket Bag

Watch The Video Tutorial



Youtube: <https://www.youtube.com/watch?v=sXdaDw8ZAEQ>



Instagram: https://www.instagram.com/fabric8_sa/channel/



Facebook: <https://www.facebook.com/Fabric8.co.za>

Printing Instructions

1. Start by only printing the first page of the pattern with the 1 inch by 1 inch & 2cm by 2cm blocks at the bottom.
2. Ensure that your printer is set to print 100%.
 - a. Make sure you haven't selected "Print Entire Image" or "Fill Entire Paper" - this will make your sizing incorrect.
 - b. You must scale the page to 100%.
3. Measure the 1 inch by 1 inch & 2cm by 2cm blocks with a ruler once it's printed and make sure that the size is correct before printing all of the pages.
4. If everything is correct, print all pages at 100% scale.
5. Stick your pattern together and cut it out.

Supplies & Tools List

These items are hyperlinked to where you can find them if they are available on the Fabric8 website. **Simply click on the item you need, and it will open up in your web browser.**

Supplies:

- [Seralon thread](#)

Tools:

- [Sewing machine bobbins](#)
- [Fabric scissors](#)
- [Fabric marker/ tailors chalk](#)
- [Pins](#)
- [Fabric clips](#)
- [Prym mini steam iron](#)
- [Mini ironing board](#)
- [Rotary cutter](#)
- [Self-healing cutting mat](#)
- [Quilting ruler](#)
- [Quilting ruler handle](#)
- Paper scissors
- [Paper glue](#)

Craft Bucket Bag

- **Step 1:**

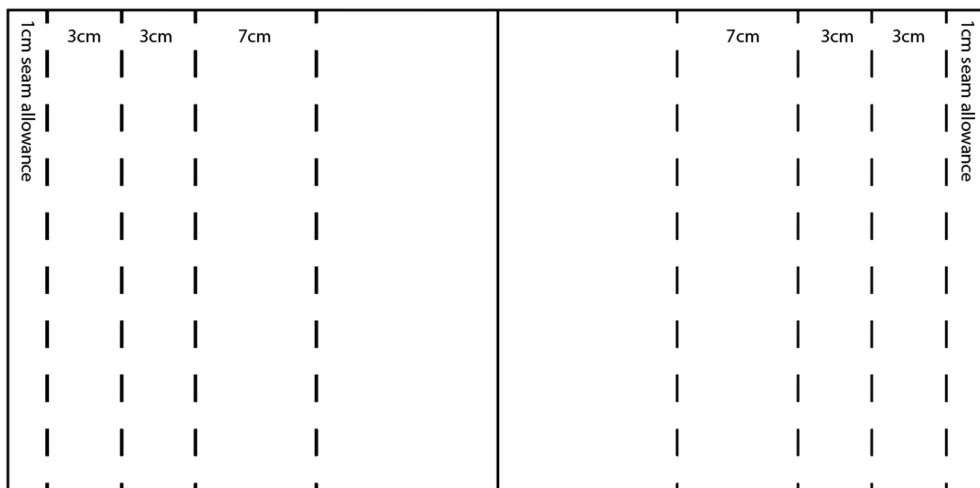
- This pattern is available in 2 sizes: large & medium.
- Decide on the fabric for your bag lining and outside. Also remember to think about the fabric for the pockets.

- **Step 2: Bag lining**

- Trim 1cm from both bottoms of lining pieces. This makes the lining fit better in the main bag.
- Place lining pieces right side to right side and pin two short sides. Sew one side from top to bottom and sew the other side leaving a 10cm turn out hole in the middle iron seams flat & open.
- Mark the $\frac{1}{4}$'s on your lining bottom and main bag lining bottom. Lining up the $\frac{1}{4}$'s Pin lining bottom piece to main bag lining bottom. Sew all around.
- Turn your lining right side out and iron if needed.

- **Step 3: Main bag & pockets**

- Fold outer pocket piece in half wrong side to wrong side. Iron top fold and topstitch along fold at 4 mm from edge and again at 8mm from edge. Repeat on the other outer pocket piece.
- Place outer pocket piece on to right side main bag piece, pinning the side edge and bottom edge together.
- Customize your own pocket sizes. Measure and sew pocket partitions.
- Repeat with other side.



- **Step 4: Bag handle**

- Fold in 1cm seam allowance on each of the long sides, iron. Fold double, iron and topstitch two long edges.
- Handle placement large bag: 12.5cm from side of bag.
- Handle placement medium bag: 10cm from side of bag.

- **Step 5: Ring tab**

- Fold in 1cm seam allowance on each of the long sides, iron. fold double, iron and topstitch two long edges.
- When done insert keyring and fold double. Pin to side of main bag body.

- **Step 6: Cord casing**

- Fold (to the wrong side) a ½ cm seam allowance on each short end and iron flat. Fold again another ½ cm seam allowance to the wrong side and iron. Fold it.
- Top stitch close to folded edge. Do this on all 4 short ends.
- Now fold both pieces in ½ length wise wrong sides together and iron. Fold to get the centre on the non-folded side and mark. Find the centre of your main bag top and mark.
- Now place centre of cord casing and main bag top right sides together and pin. Pin the rest and sew together. Do not fold the cord casing up keep like it is.

- **Step 7: Finishing bag**

- Place main bag pieces right side to right side, matching all edges. Pin and Sew both short sides together at 1cm.
- Mark the ¼ 's of main bag and main bag bottom. Lining up the ¼'s Pin bag bottom piece to main bag bottom. Sew all around. Leave bag with wrong side out.

- **Step 8: Final finishes**

- Place lining (right side out) into the main bag (right side in) lining up the side seams. Pin and sew all around.
- Turn bag over through the turnout hole left in lining side seam. Turn up the cord casing and do a topstitch through outer bag and lining just below the cord casing.
- Using a loop turner draw cord through cord casing and knot two end.

Craft Bucket Bag



1"x1"
Test
Block

2x2cm
Test
Block



fabric8
CRAFT BUCKET BAG
LARGE - CORD CASE
Cut x 2 Outer Fabric
1cm Seam Allowance Incl



fabric8
CRAFT BUCKET BAG
LARGE - RING TAB
Cut x 1 Outer Fabric
1cm Seam Allowance Incl



fabric8
CRAFT BUCKET BAG
LARGE - HANDLE
Cut x 2 Outer Fabric
1cm Seam Allowance Incl





CRAFT BUCKET BAG
LARGE - BAG BODY

Cut x 2 Outer Fabric
Cut x 2 Lining Fabric
Cut x 2 Fusible Batting
1cm Seam Allowance Incl



2



3

fabric8

**CRAFT BUCKET BAG
LARGE - BAG BOTTOM**

Cut x 1 Outer Fabric
Cut x 1 Lining Fabric
Cut x 1 Fusible Batting
1cm Seam Allowance Incl

Extend This line to 42cm



**CRAFT BUCKET BAG
LARGE - OUTER POCKET**

Cut x 2 Outer Fabric
1cm Seam Allowance Incl

FinalPattern
Measurement
of 42 x 42 cm

Extend This line to 42cm



Extend This line to 32cm



**CRAFT BUCKET BAG
LARGE - OUTER POCKET**

Cut x 2 Outer Fabric
1cm Seam Allowance Incl

FinalPattern
Measurement
of 32 x 32 cm

Extend This line to 32cm



5



**CRAFT BUCKET BAG
MEDIUM - HANDLE**

Cut x 2 Outer Fabric
1cm Seam Allowance Incl





**CRAFT BUCKET BAG
MEDIUM - BAG BODY**

Cut x 2 Outer Fabric
Cut x 2 Lining Fabric
Cut x 2 Fusible Batting
1cm Seam Allowance Incl

6





**CRAFT BUCKET BAG
MEDIUM - BAG BODY**

Cut x 2 Outer Fabric
Cut x 2 Lining Fabric
Cut x 2 Fusible Batting
1cm Seam Allowance Incl





CRAFT BUCKET BAG MEDIUM - BAG BOTTOM

Cut x 1 Outer Fabric
Cut x 1 Lining Fabric
Cut x 1 Fusible Batting
1cm Seam Allowance Incl



CRAFT BUCKET BAG MEDIUM - CORD CASE

Cut x 2 Outer Fabric
1cm Seam Allowance Incl



CRAFT BUCKET BAG MEDIUM - RING TAB

Cut x 1 Outer Fabric
1cm Seam Allowance Incl

